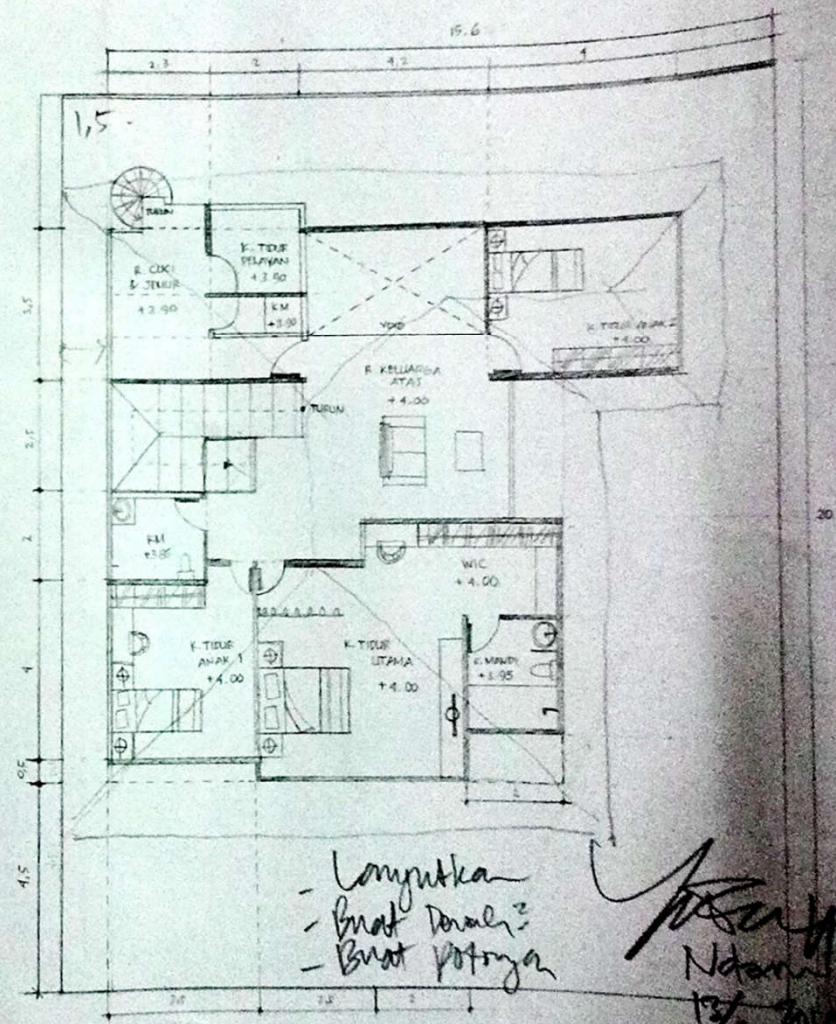
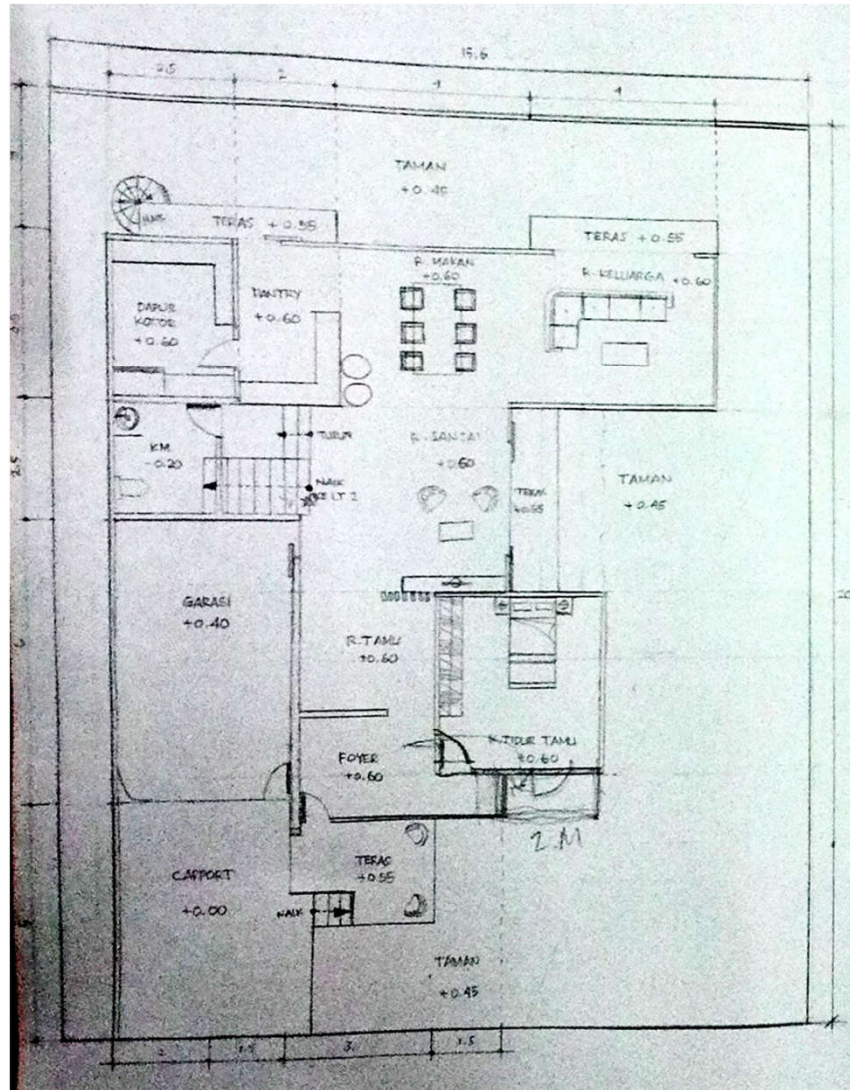


WAJIB ASISTENSI 2X 2018

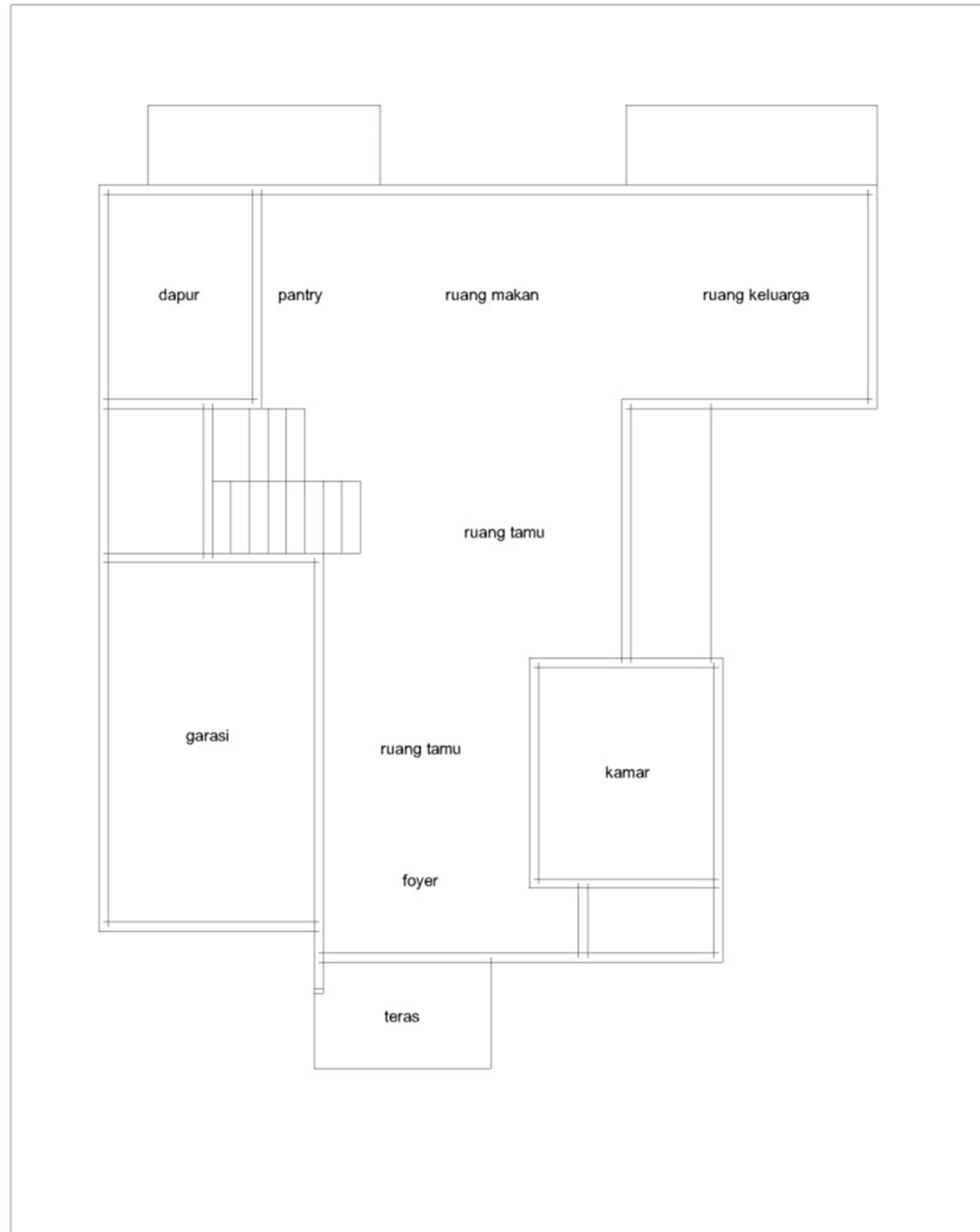
PENDEKATAN PERANCANGAN STRUKTUR (RANGKA KAKU BETON BERTULANG)

dari Denah bangunan → DENAH +
STRUKTUR RANGKA

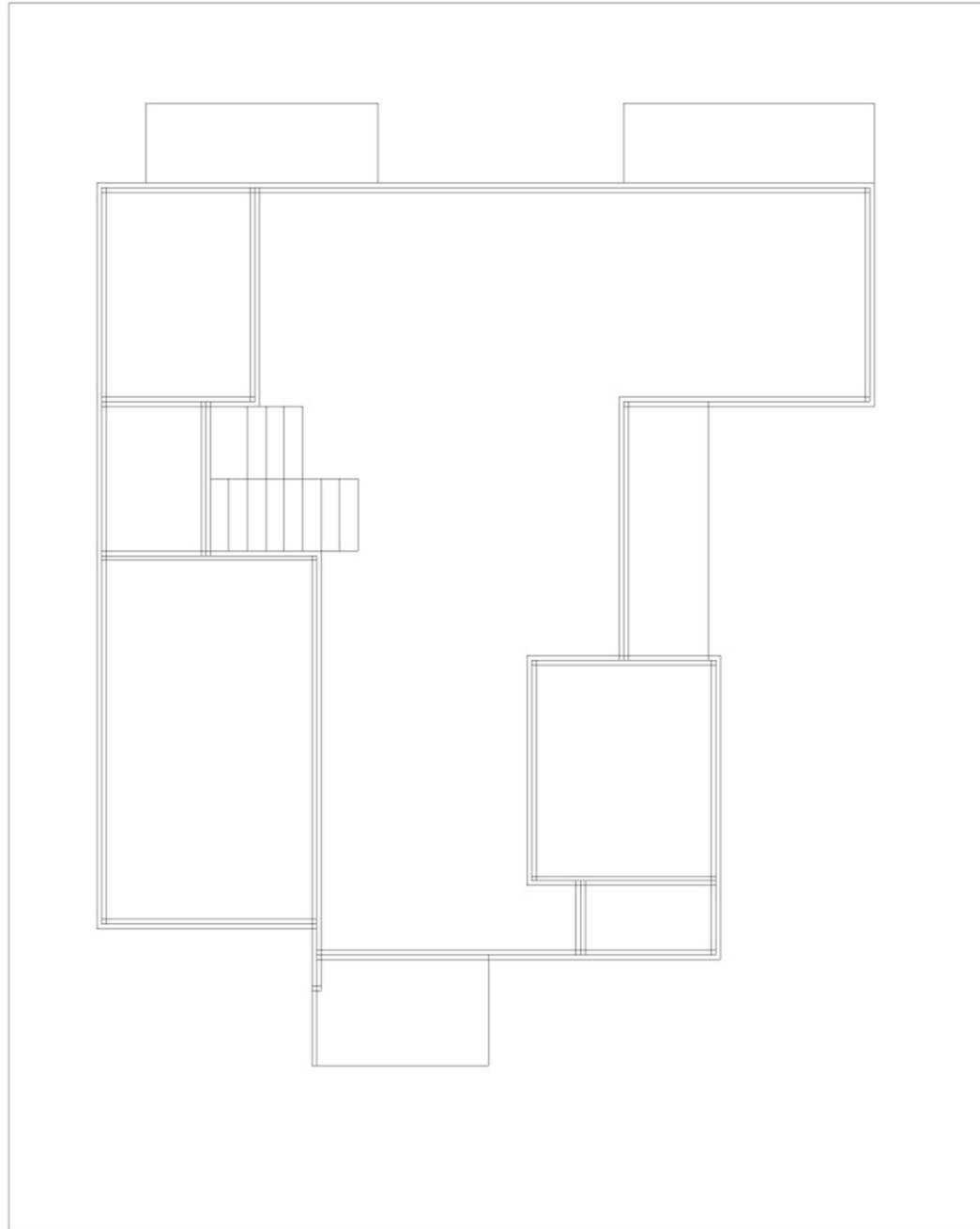


- Longputka
- Buat Dapur
- Buat Potong

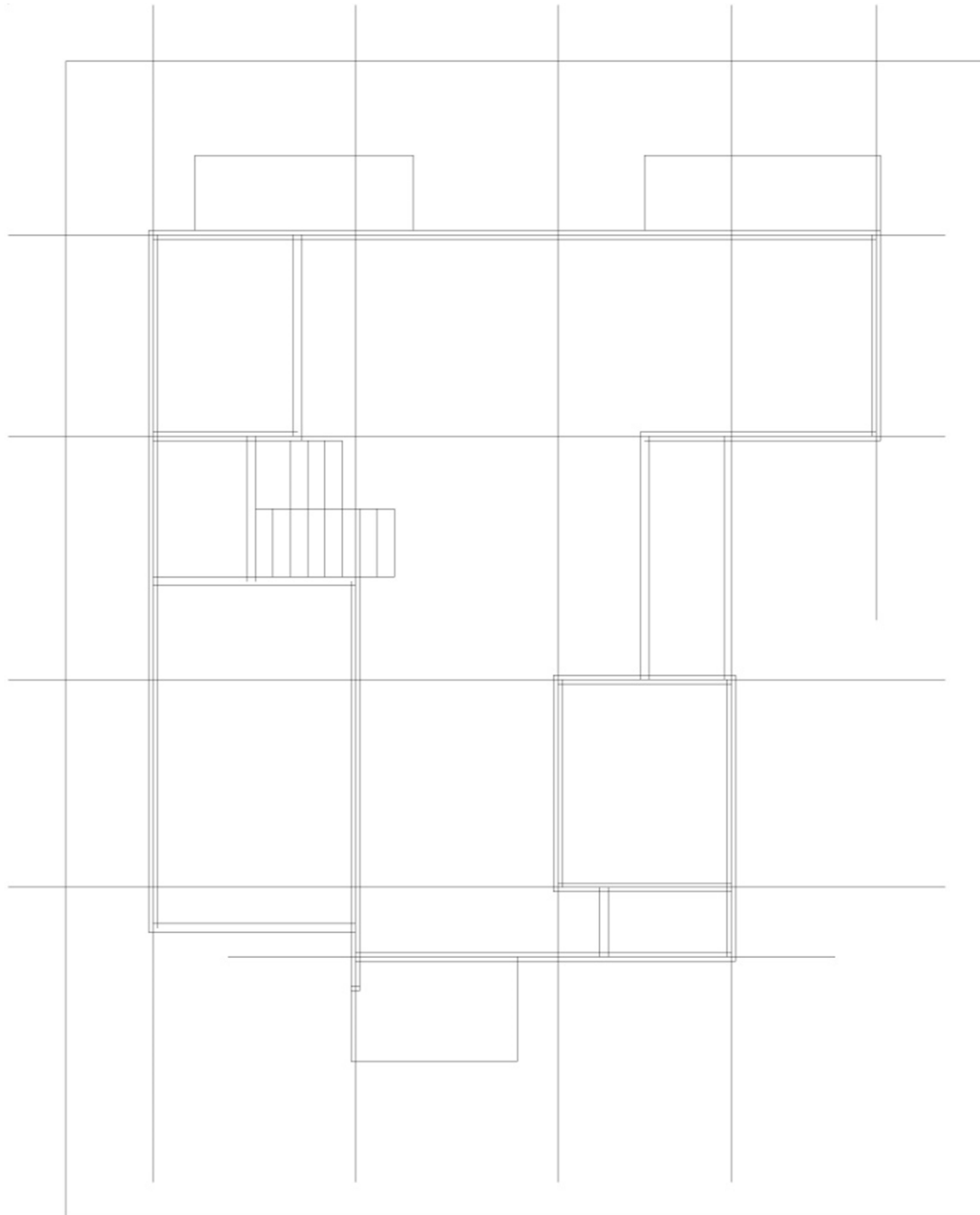
Ndham
13/9/2014



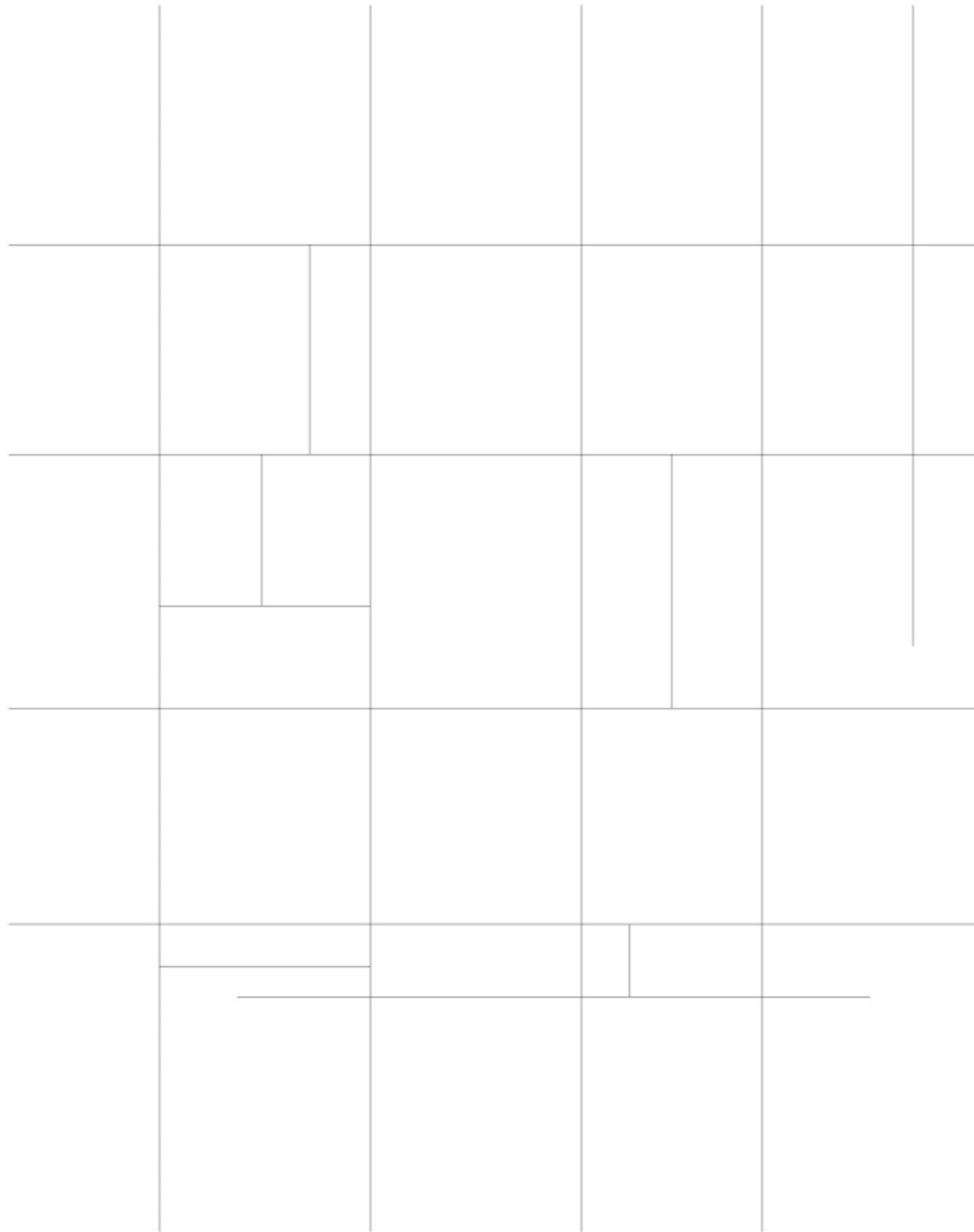
dari denah
ruang



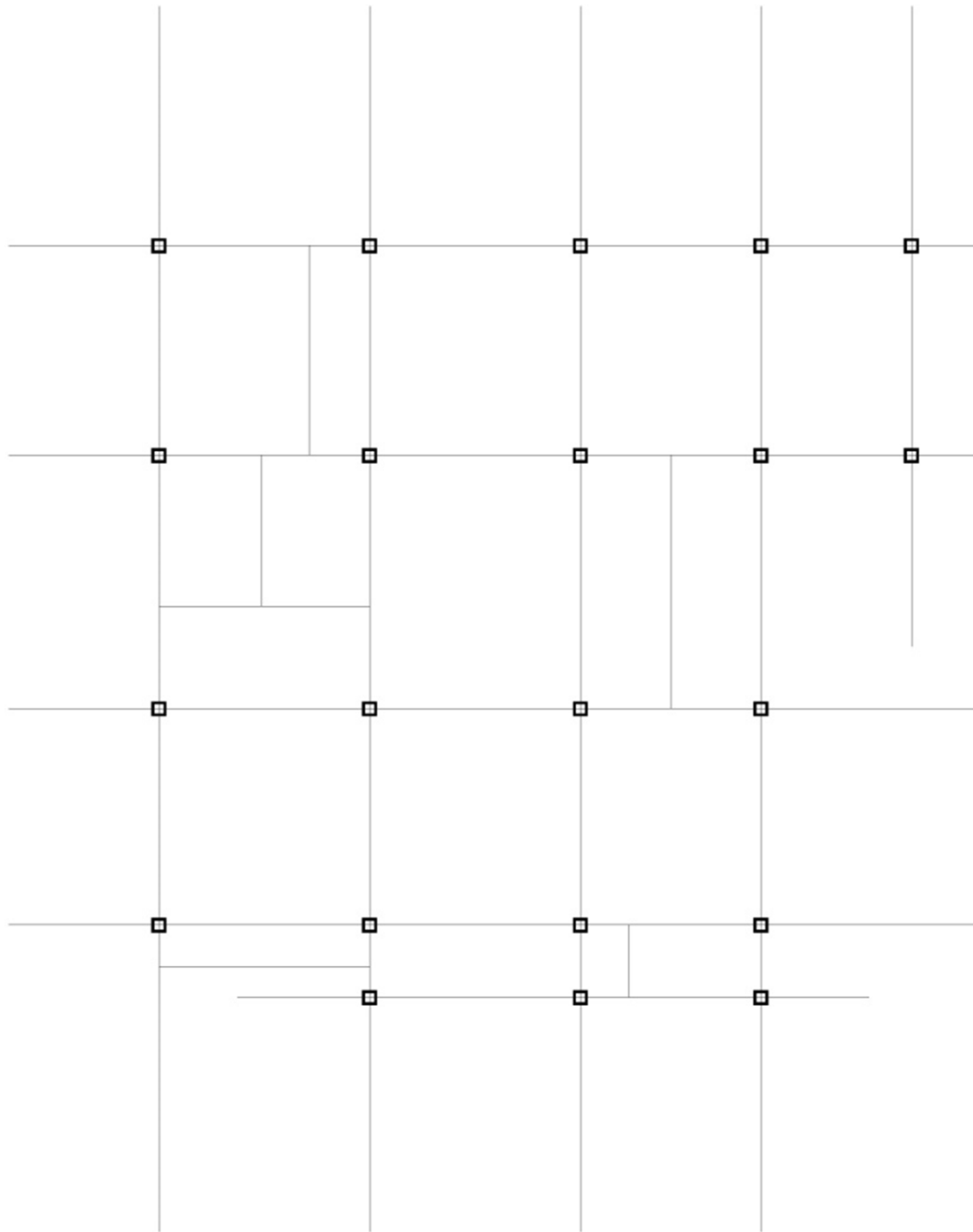
pola
ruang



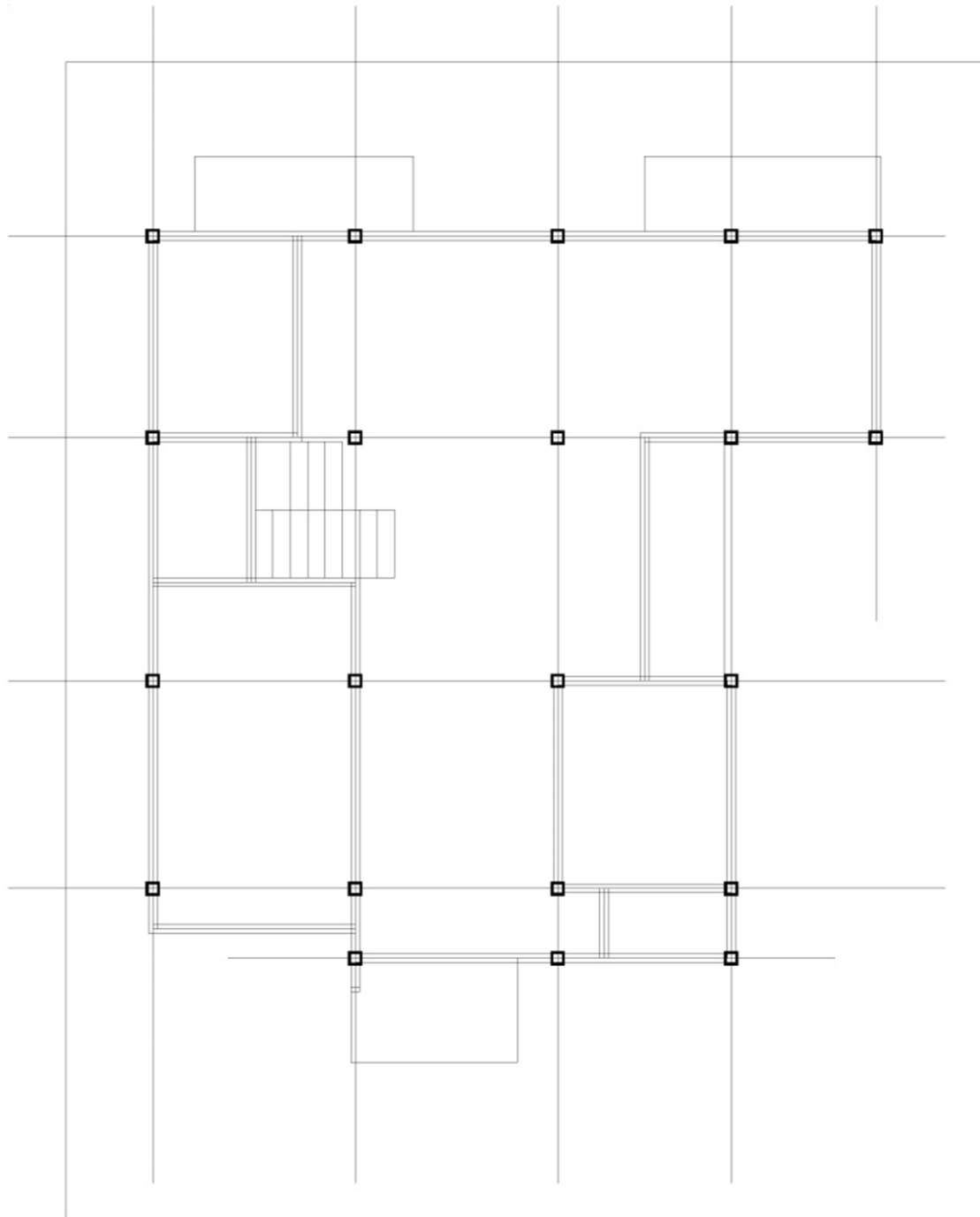
mencari
pola grid
dari denah
keseluru
han



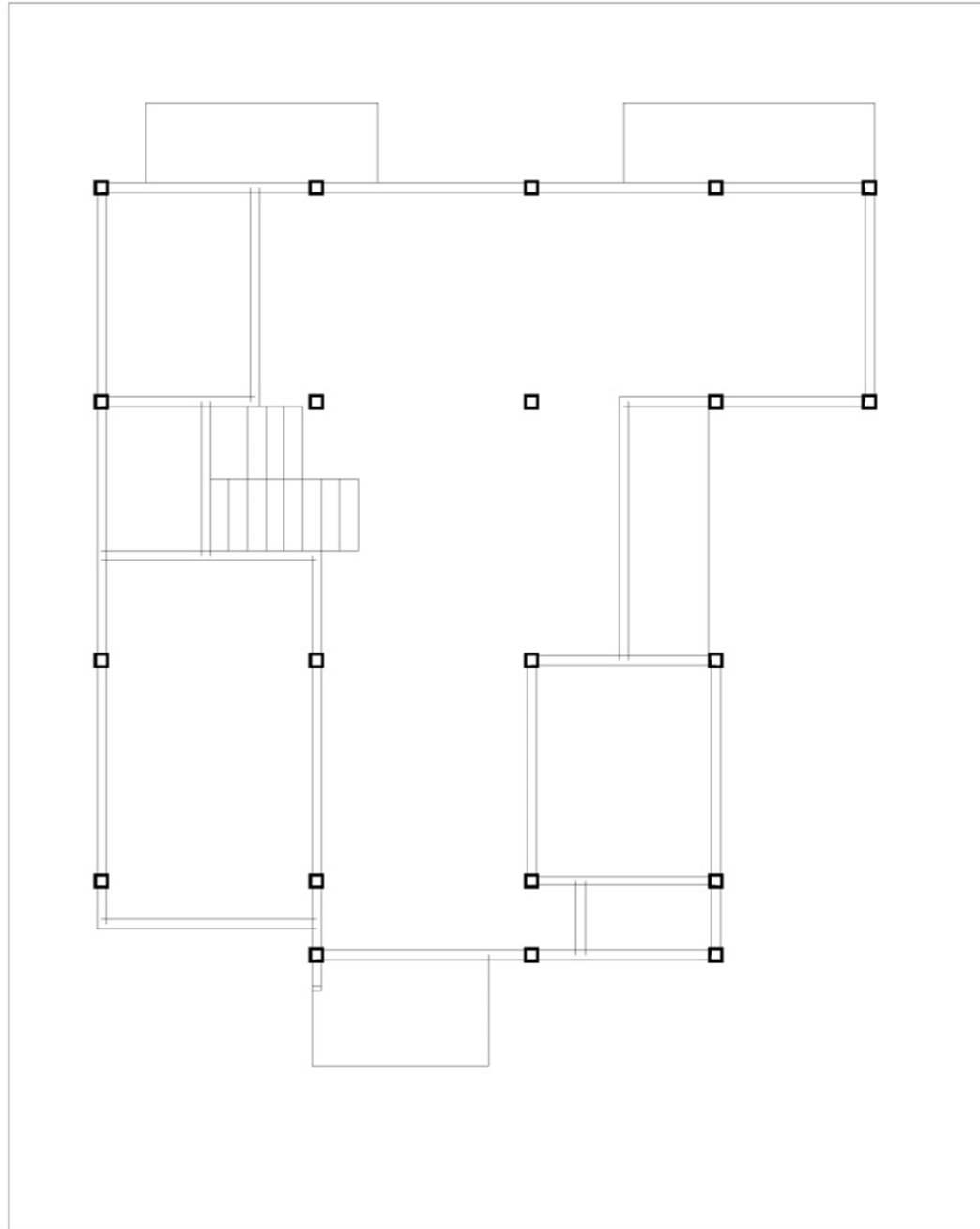
didapat
grid dari
bangunan



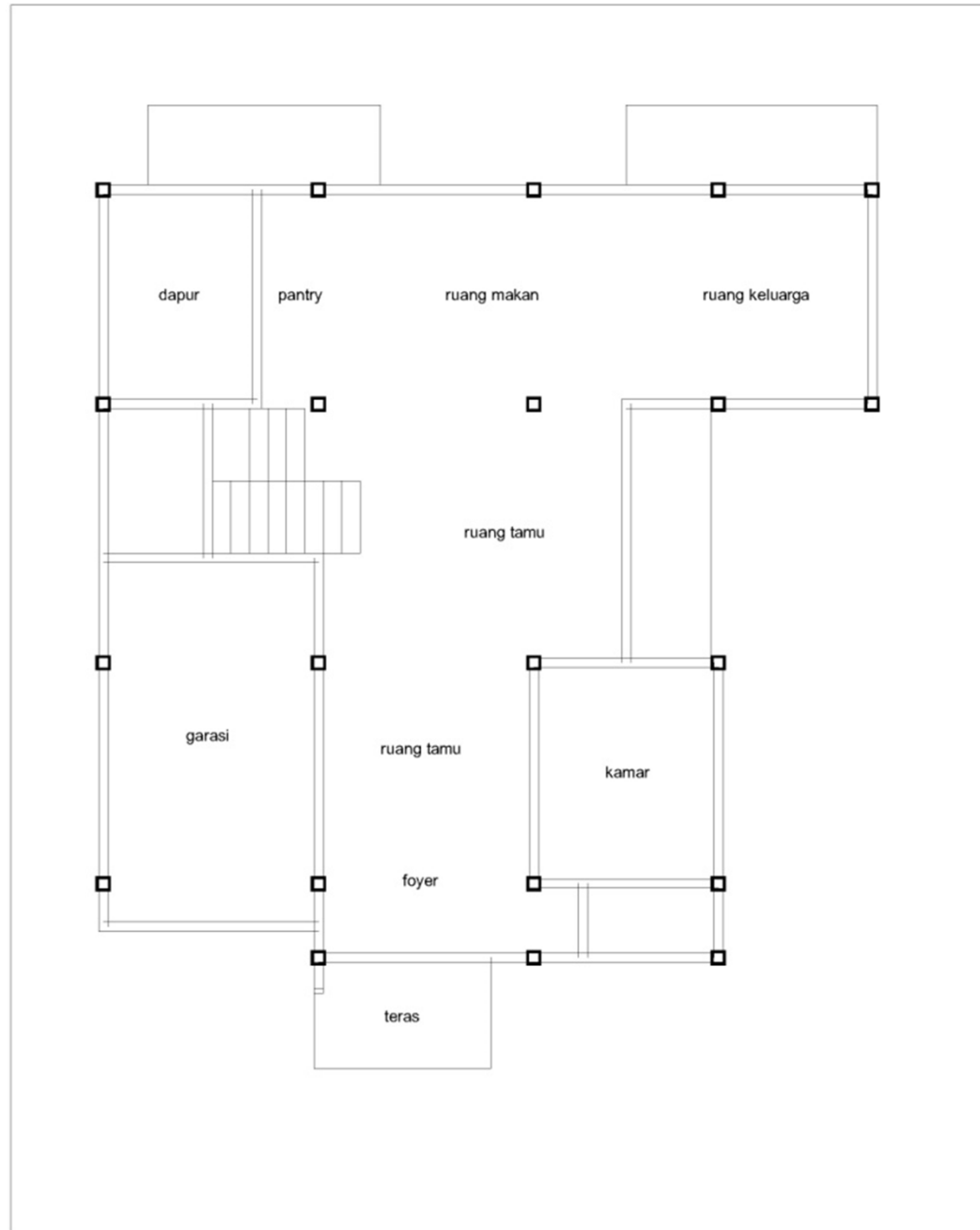
menempatkan kolom-kolom struktur



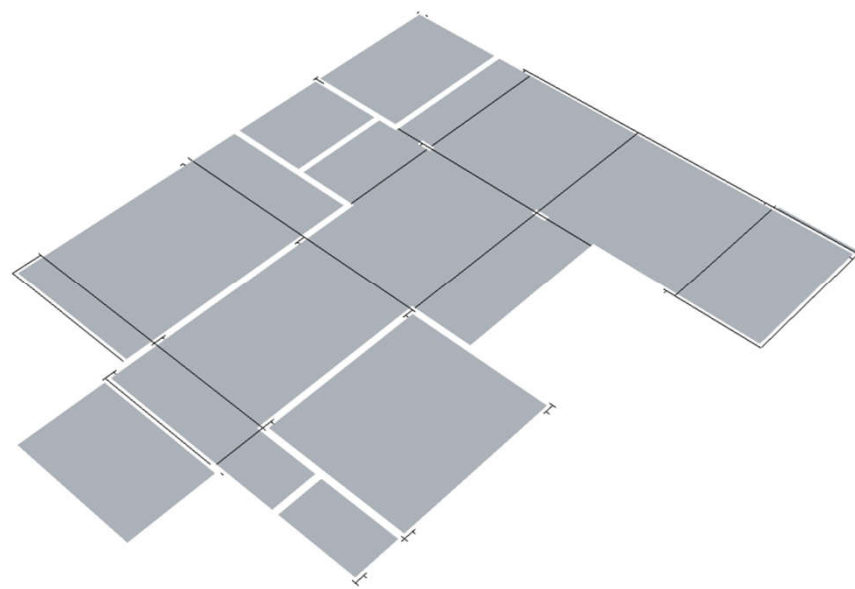
menyelaras
kan kolom-
kolom
struktur
dengan
ruang-ruang

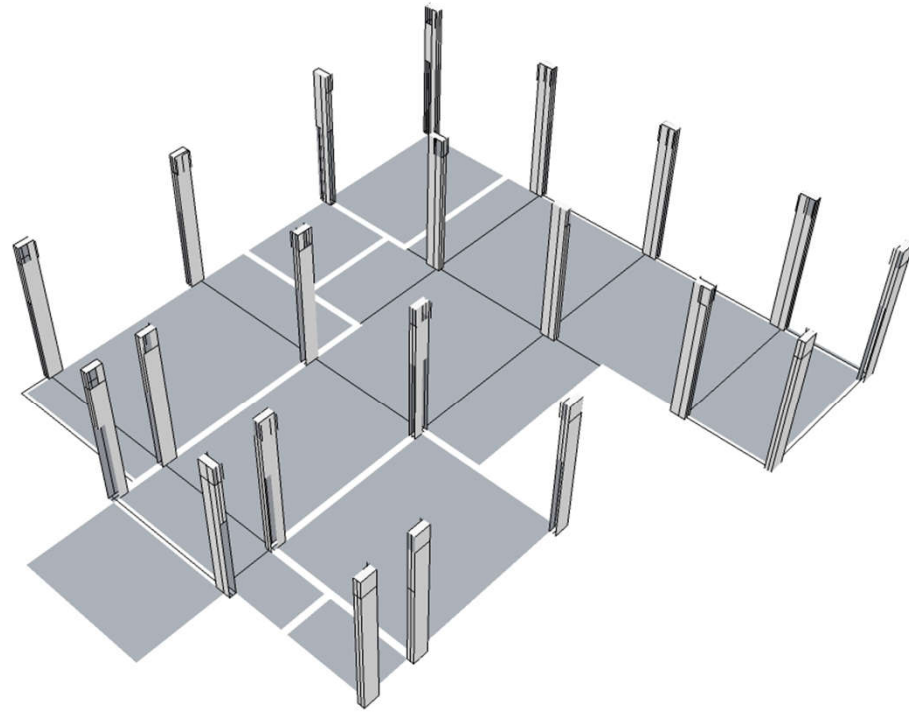


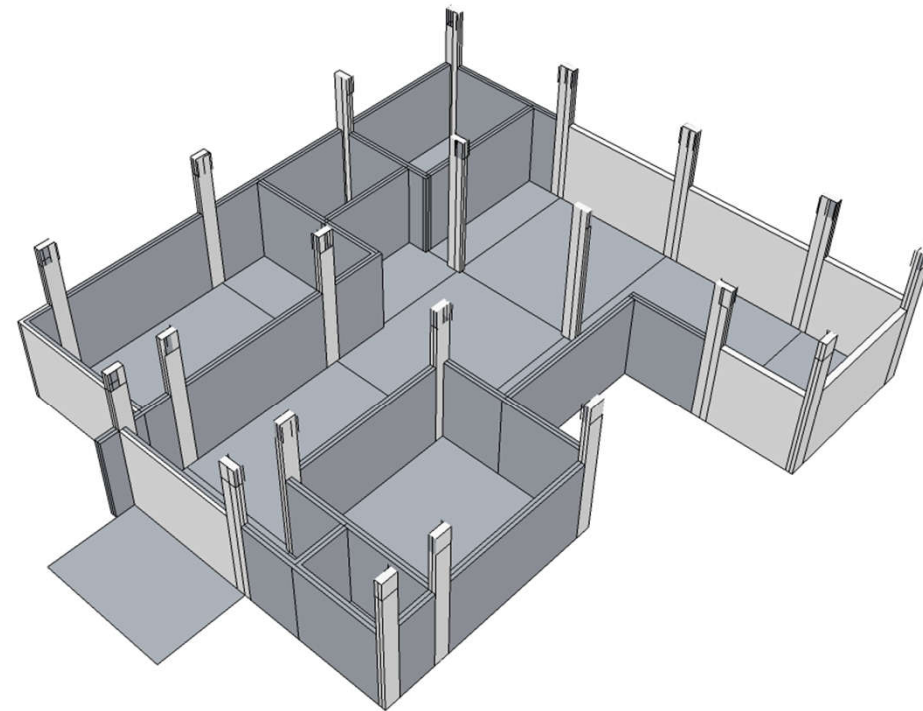
MENETAP
KAN kolom-
kolom
struktur
dengan
ruang-ruang

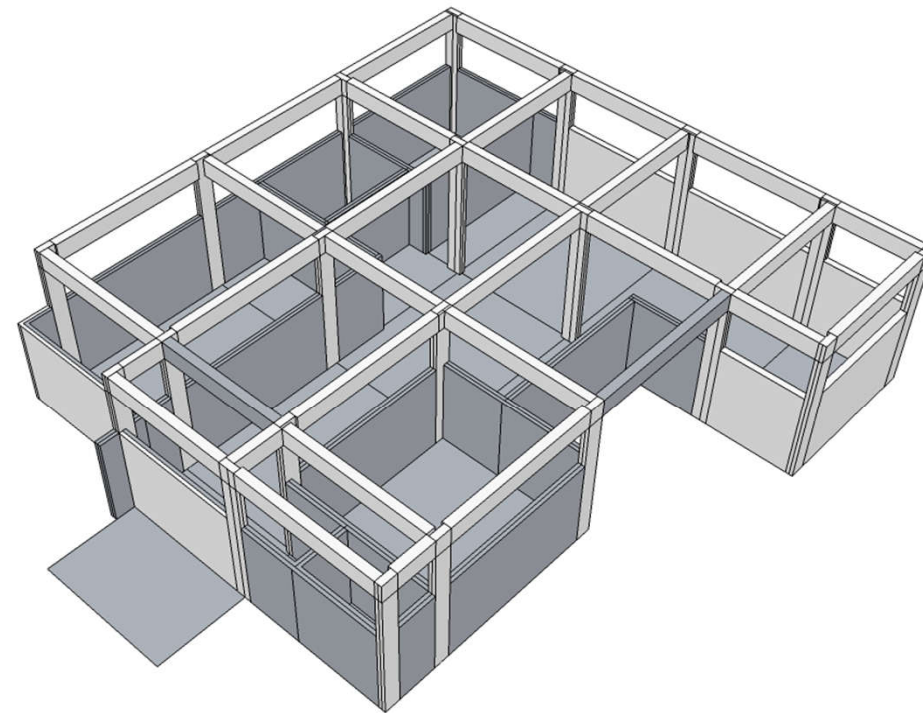


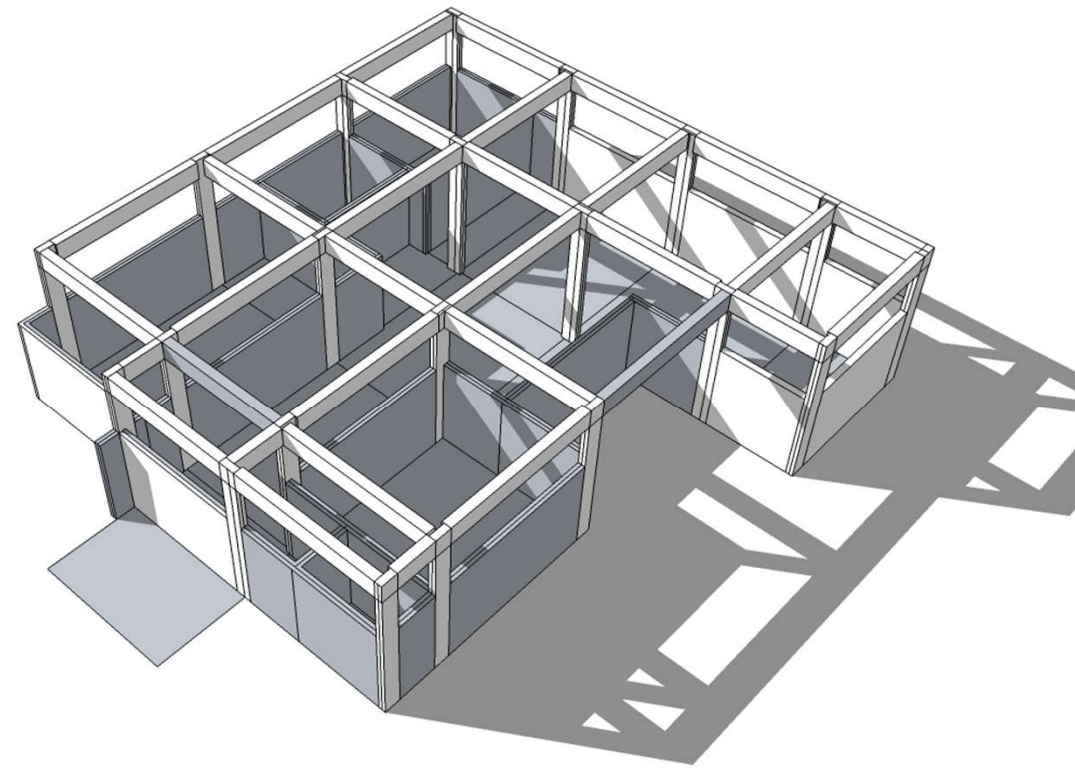
MENETAP
KAN kolom-
kolom
struktur
dengan
ruang-ruang

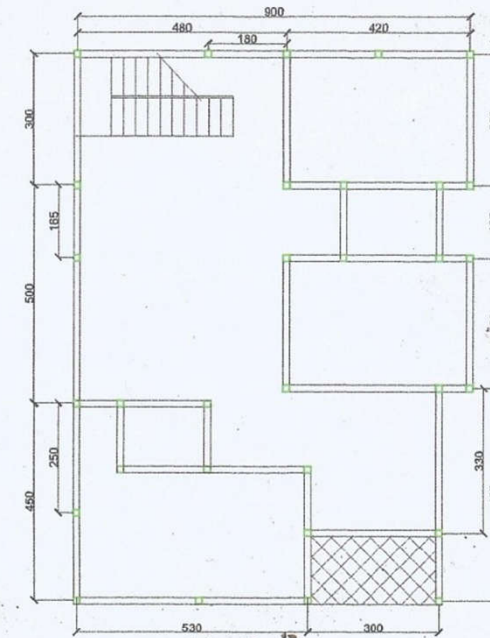
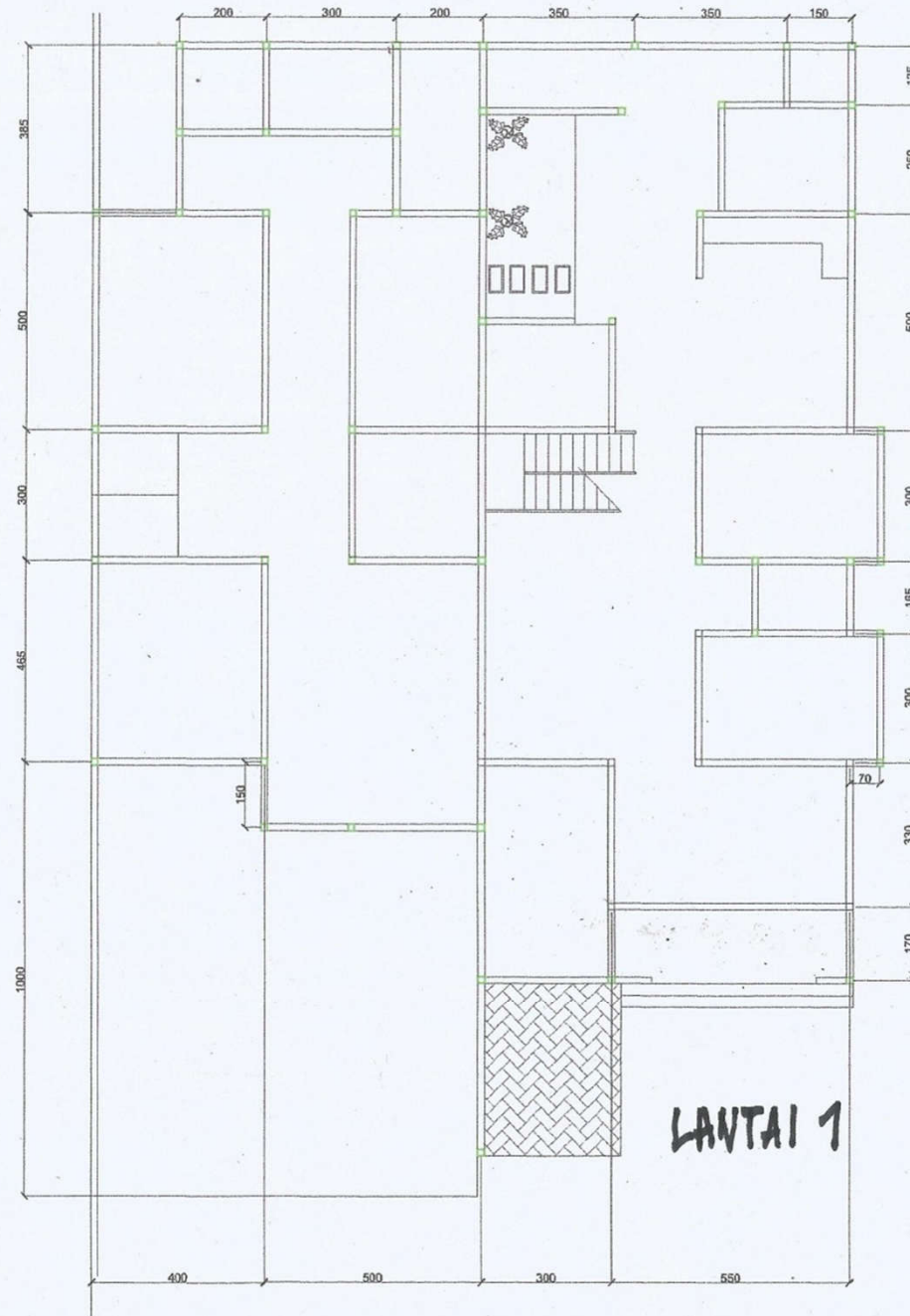






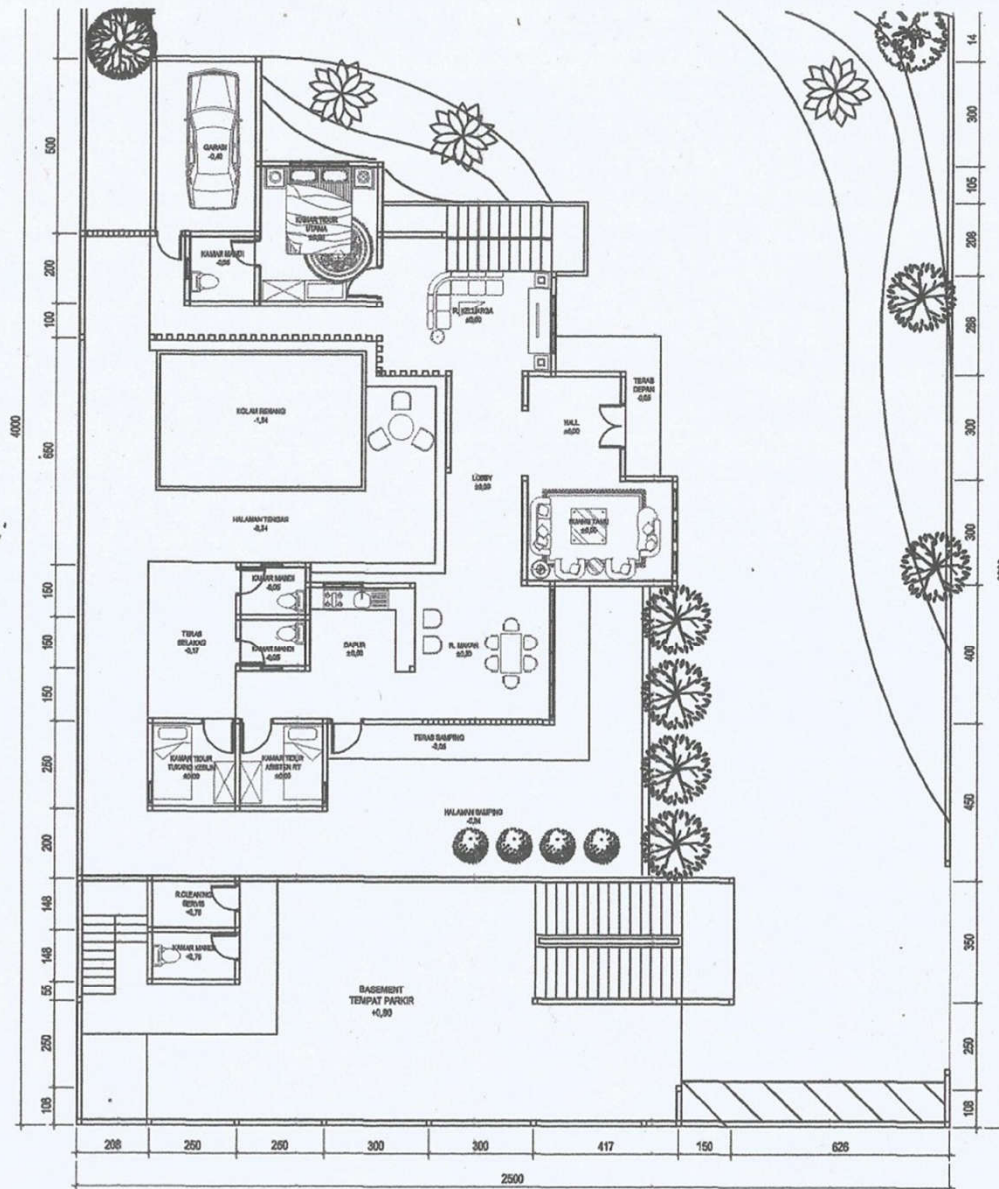






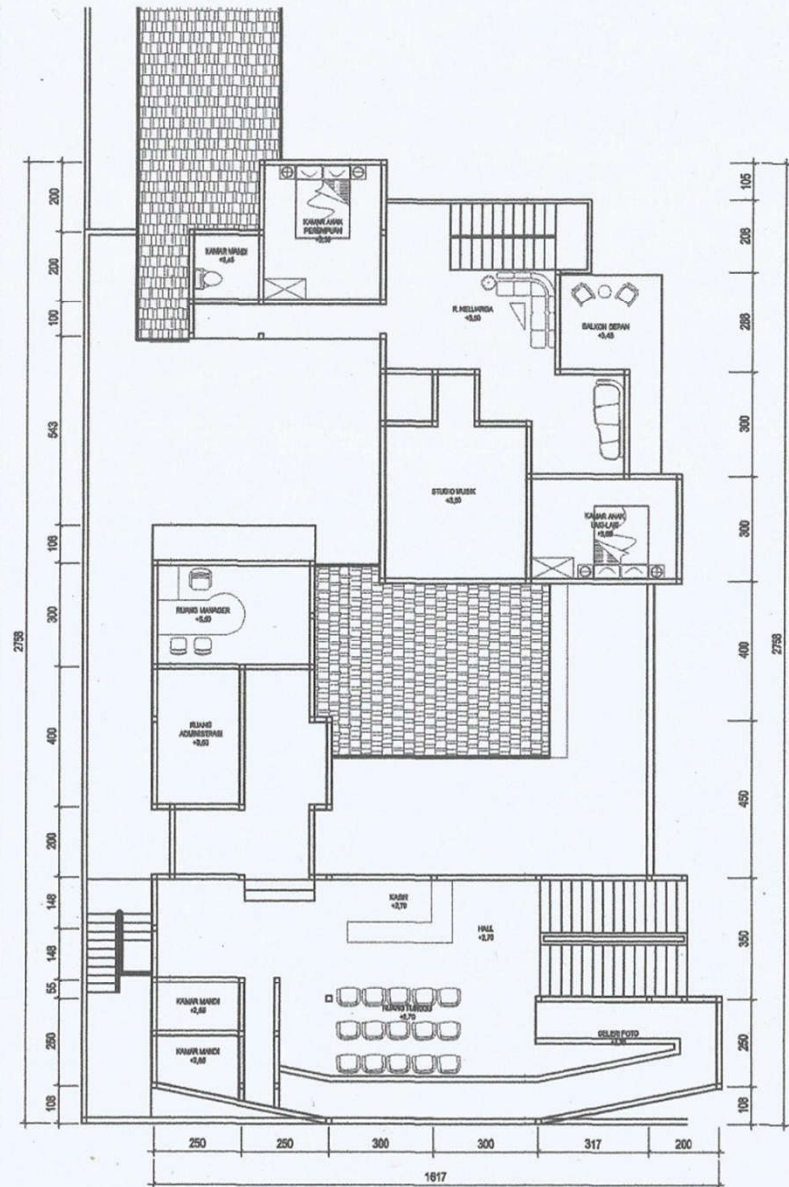
LANTAI 2

PERLETAKAN KOLON 01



DENAH LANTAI 1
SKALA 1 : 100

PERLETAKAN KOLOM 02



DENAH LANTAI 2
SKALA 1 : 100

