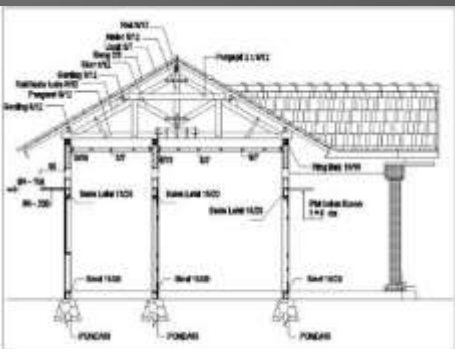


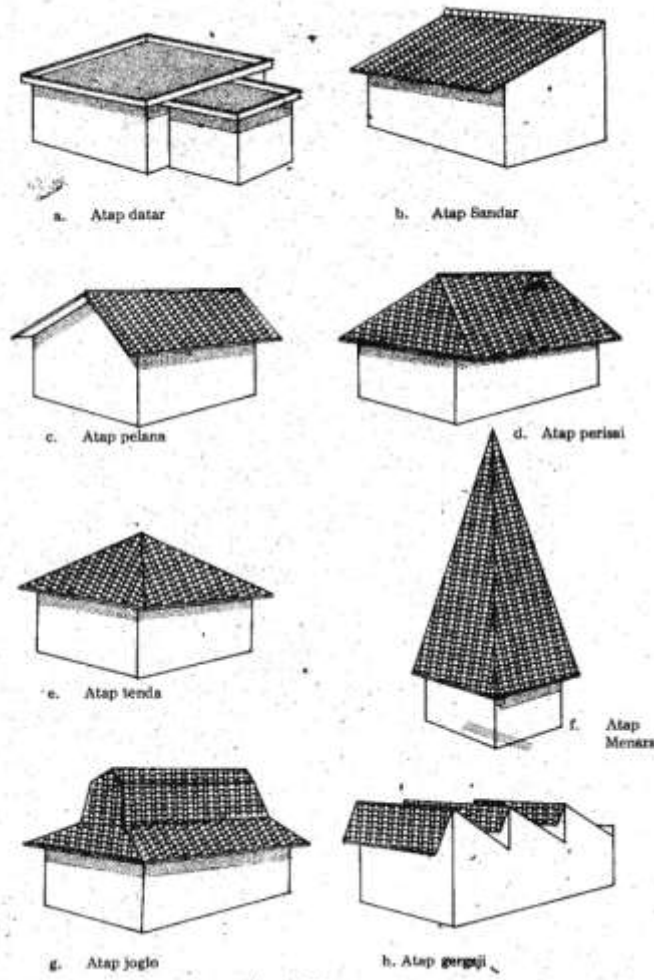
RENCANA ATAP & DETAIL KUDA-KUDA



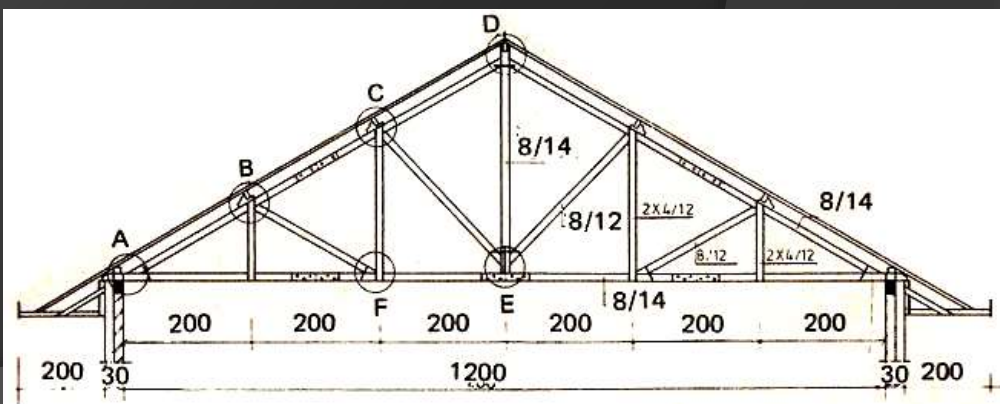
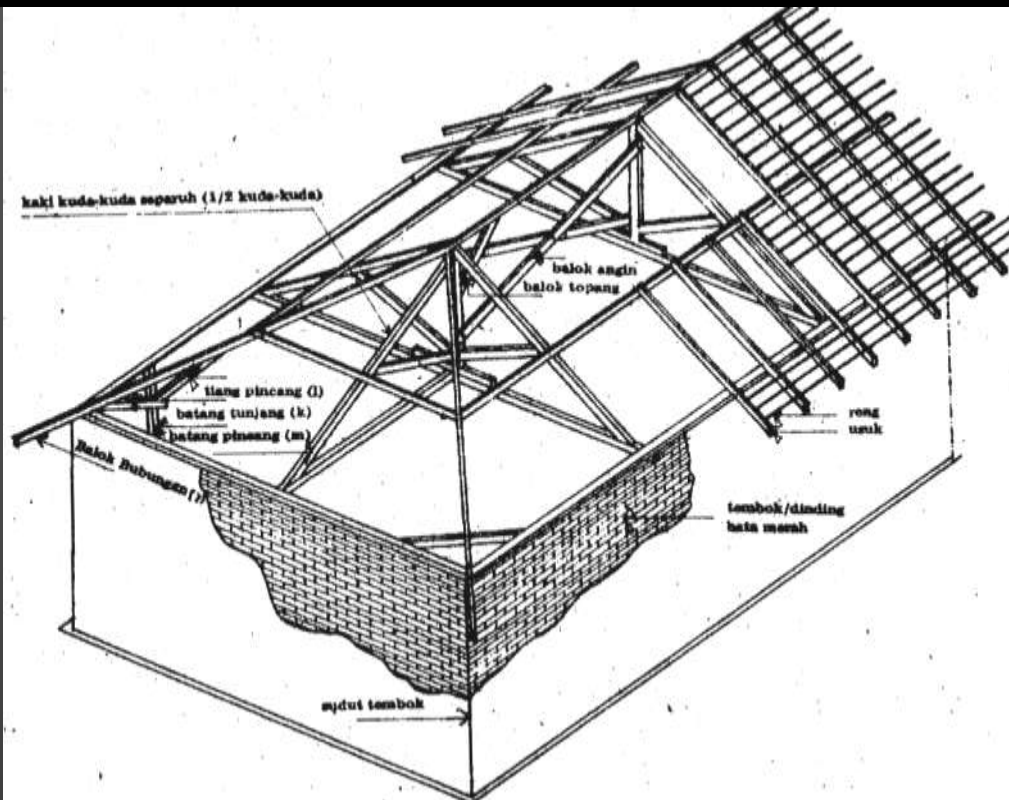
please wait...

RANGKA ATAP

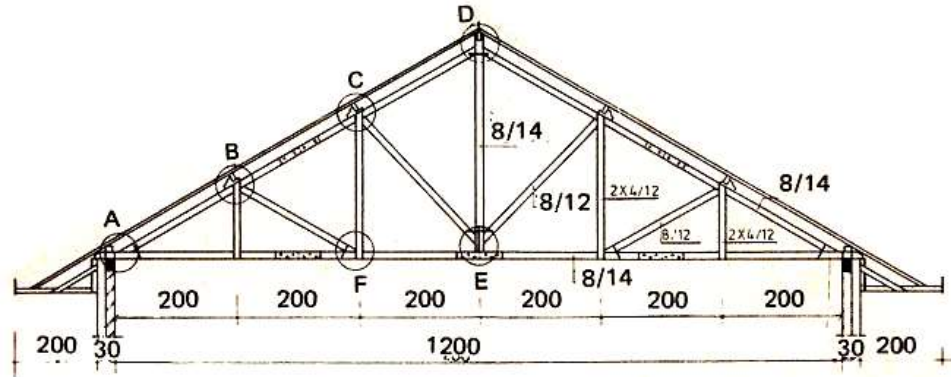
12. BENTUK-BENTUK ATAP DALAM "Proyeksi"



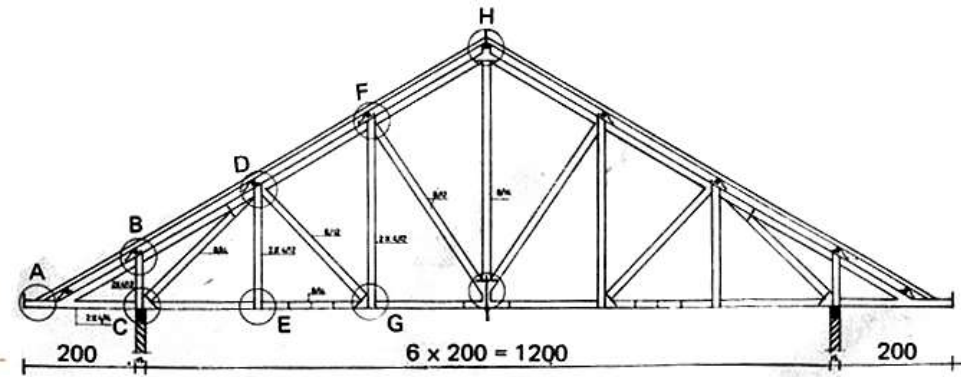
Gambar 12.



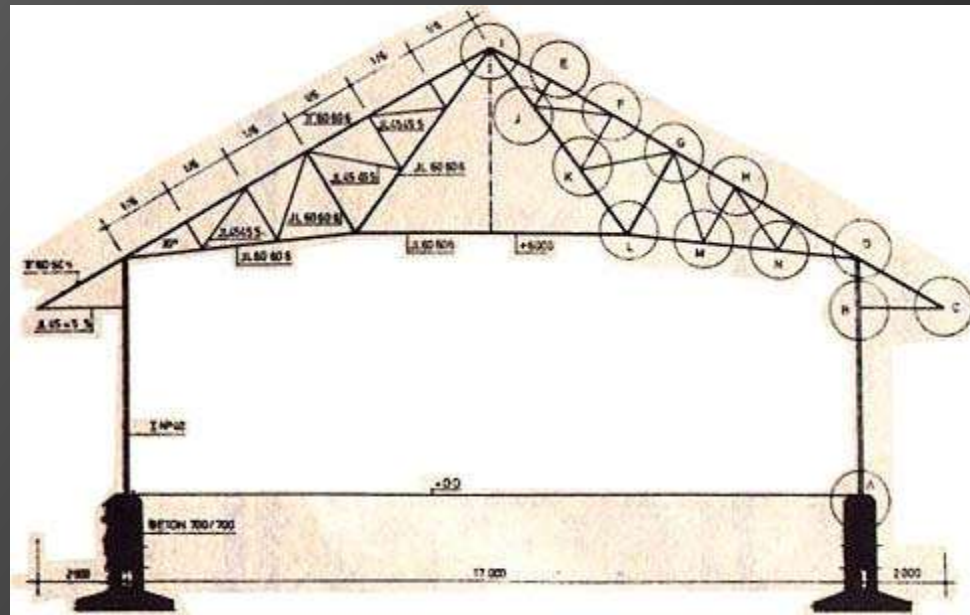
MACAM KUDA-KUDA



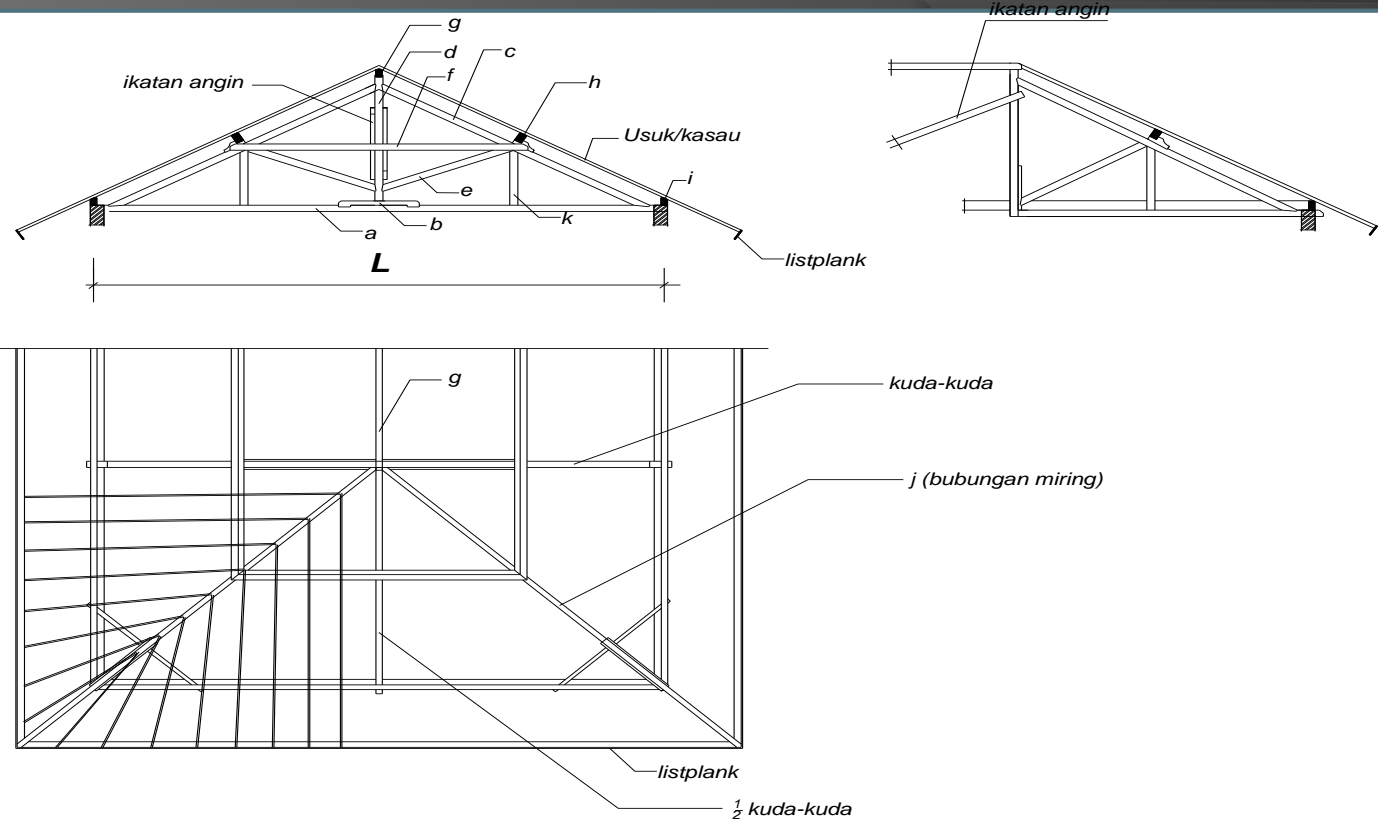
KAYU



KAYU



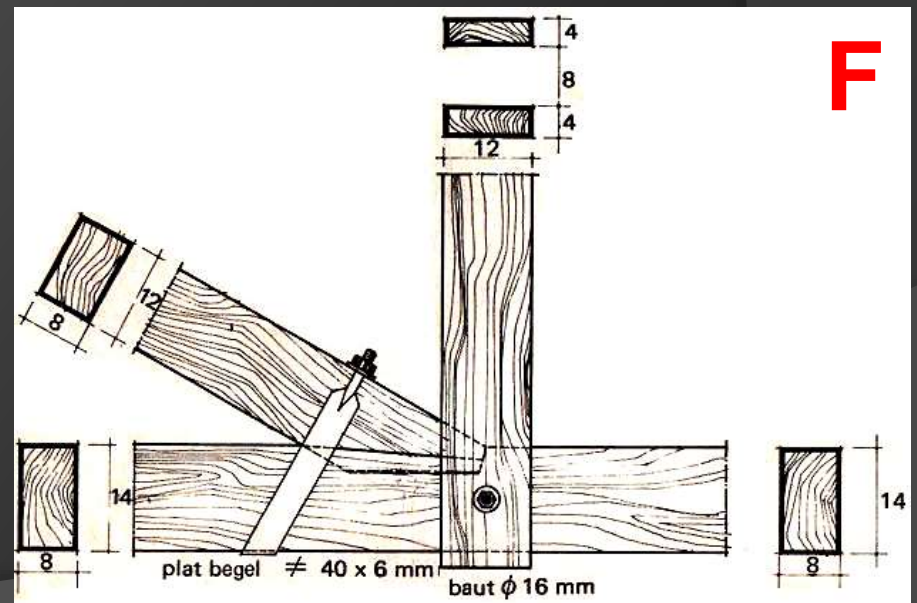
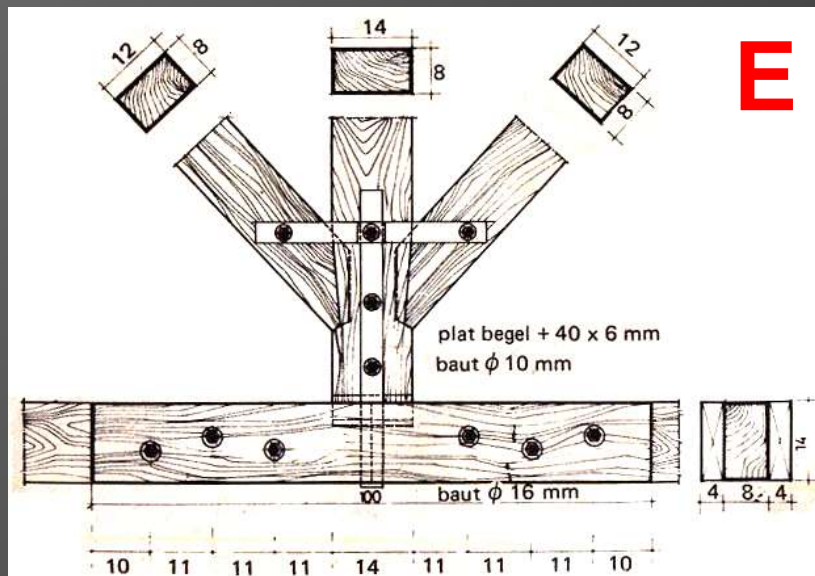
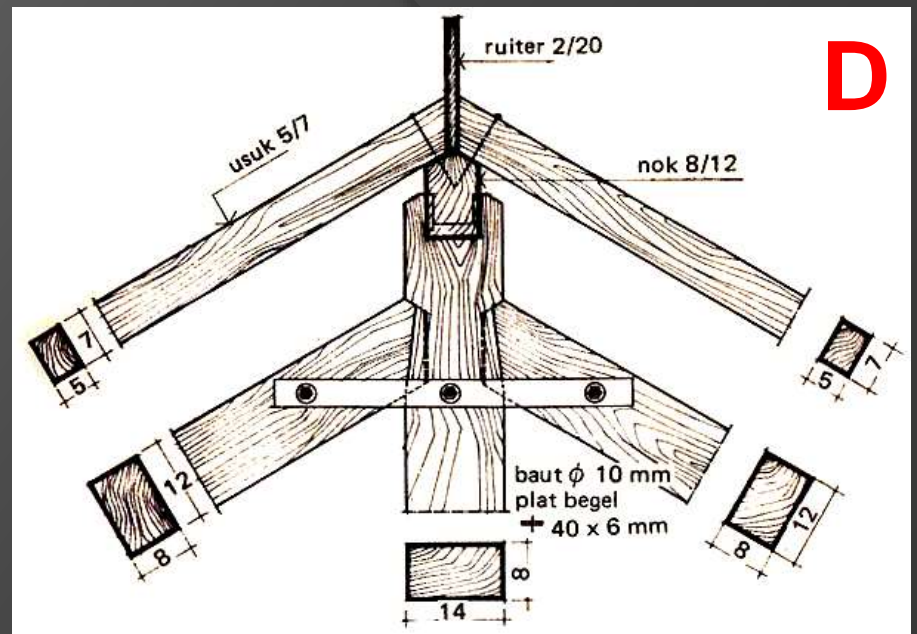
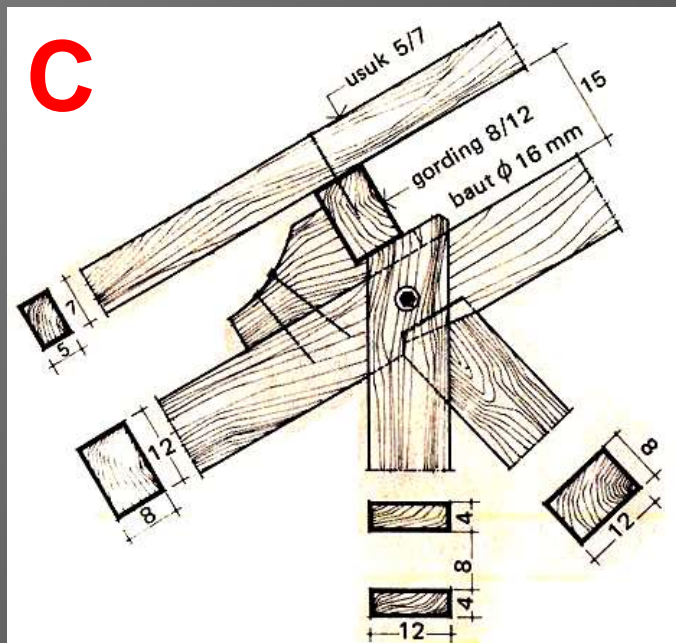
BAJA

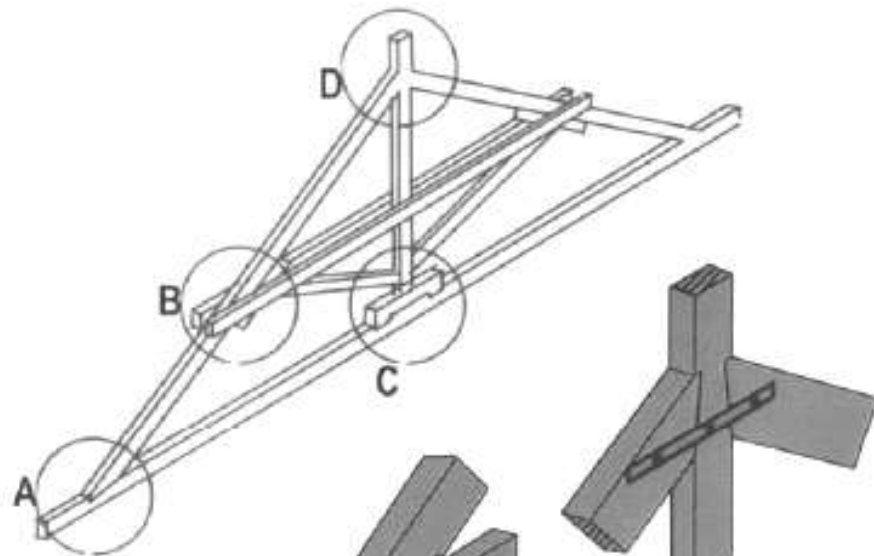


NO.	NAMA BATANG	KO DE	BENTANGAN TEORITIS (L) DALAM METER					
			3 - 4	4 - 6	6 - 7	7 - 8	8 - 10	10 - 12
01.	Balok Tarik	a	7/10 – 8/12	7/12-8/14	7/14-8/15	7/15-8/16	8/16	8/16
02.	Balok Kunci	b	*)	7/12-8/14	7/14-8/15	7/15-8/16	8/16	8/16
03.	Kaki Kuda-kuda	c	6/8-8/12	7/10 – 8/12	7/12-8/14	7/14-8/15	8/15	8/16
04.	Tiang Gantung	d	7/8-8/10	7/10 – 8/12	7/12-8/14	7/14-8/15	8/15	8/16
05.	Balok Sokong/Skur	e	*)	6/8-8/10	7/10 – 8/12	7/14-8/15	8/12-8/14	8/14-8/15
06.	Balok Gapit	f	*)	5/10	5/12	5/12	6/15	6/16
07.	Balok Bubungan/Nok	g	7/10 – 8/12	7/12-8/14	7/14-8/15	7/15-8/16	8/16	8/18
08.	Balok Gording	h	7/10 – 8/12	7/12-8/14	7/14-8/15	7/15-8/16	8/16	8/18
09.	Balok Tembok	i	7/8-8/10	7/12-8/12	7/12-8/14	7/15-8/16	8/16	8/16
10.	Balok Jurai	j	7/10 – 8/12	7/12-8/14	7/14-8/15	7/15-8/16	8/16	8/18
11*	Tiang Sokong/Skur	k	*)	8/10	8/12	10/12	10/14	8/14
12*	Tiang Pincang	l	*)	7/8-8/10	7/10 – 8/12	7/12-8/14	8/12	8/14
13*	Balok Pincang	m	*)	4/10	5/10	5/12	6/15	8/16

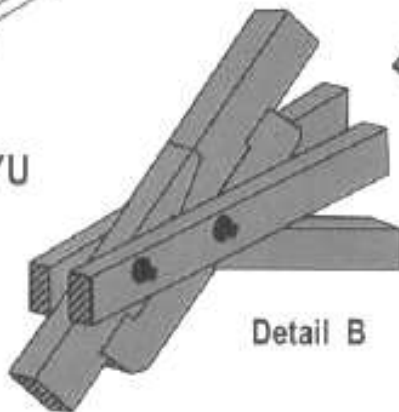
BAGIAN-BAGIAN KUDA-KUDA DAN UKURANNYA



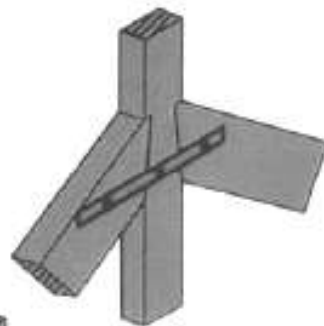




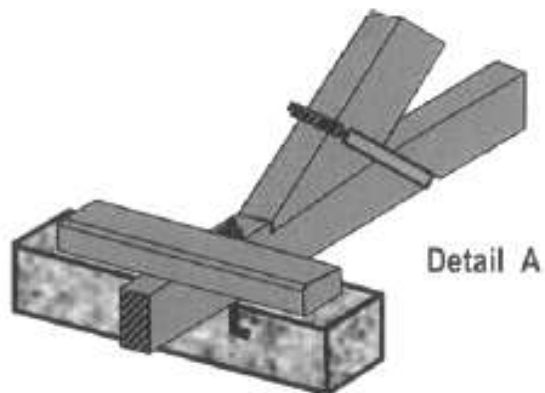
KUDA-KUDA KAYU



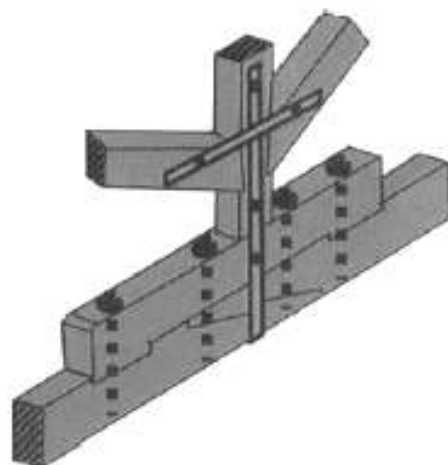
Detail B



Detail D



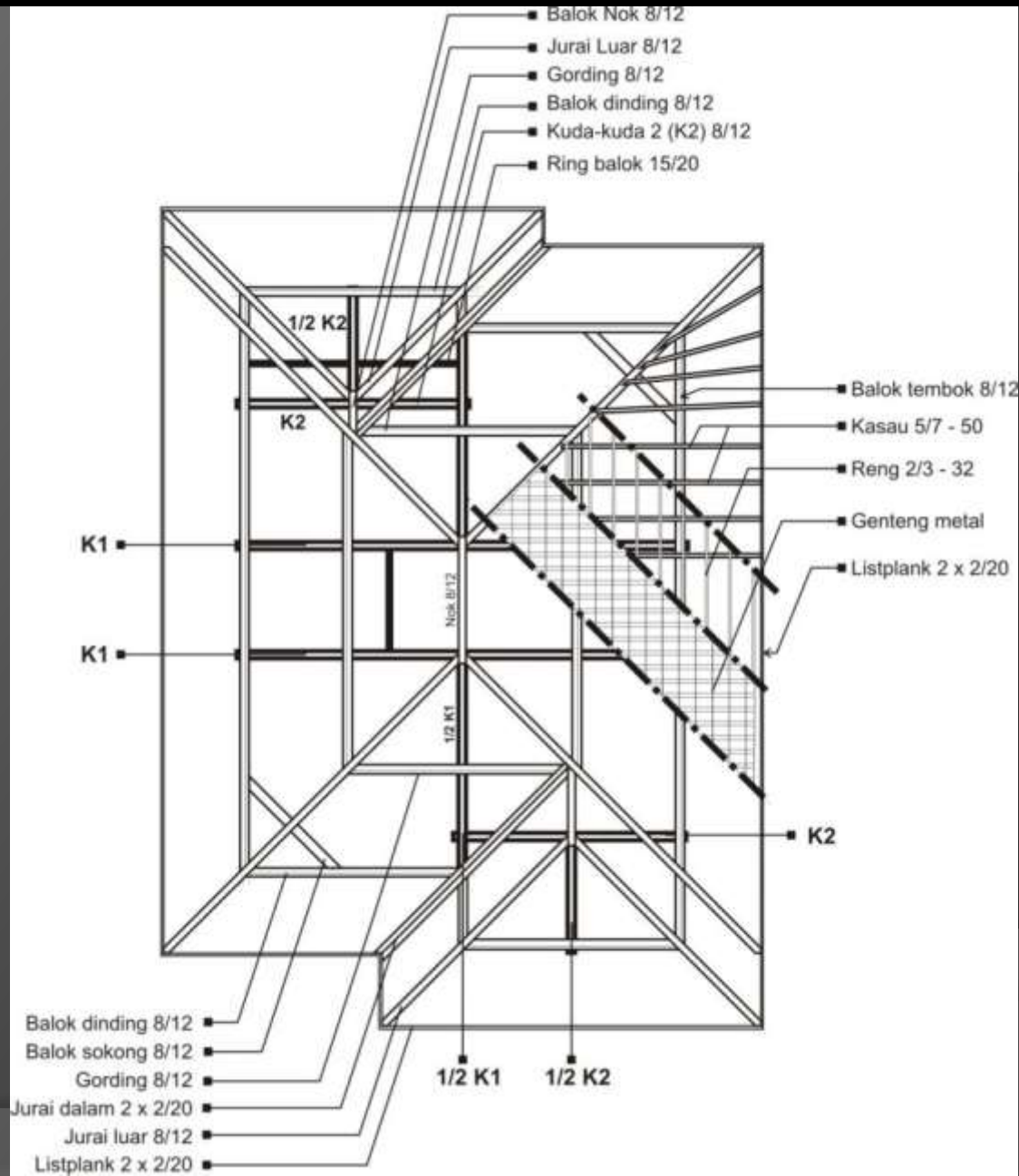
Detail A



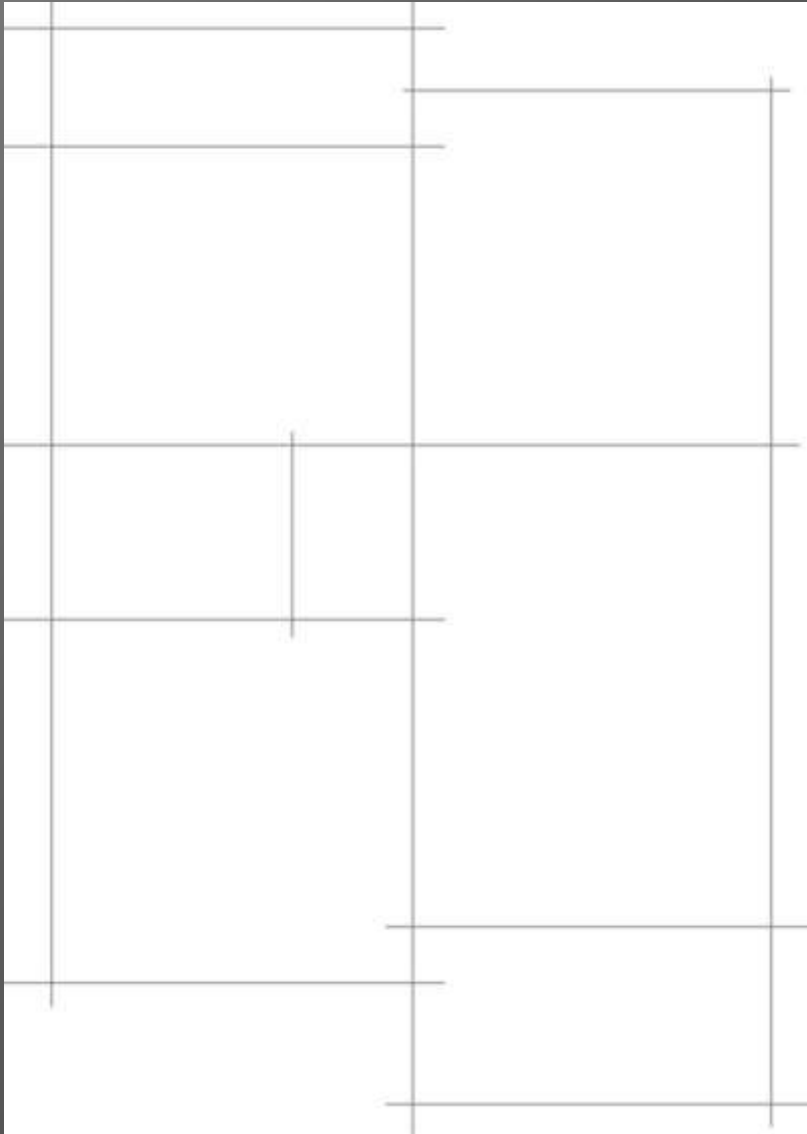
Detail C

Gambar XI-9, Detail Hubungan antar Batang Kuda-Kuda

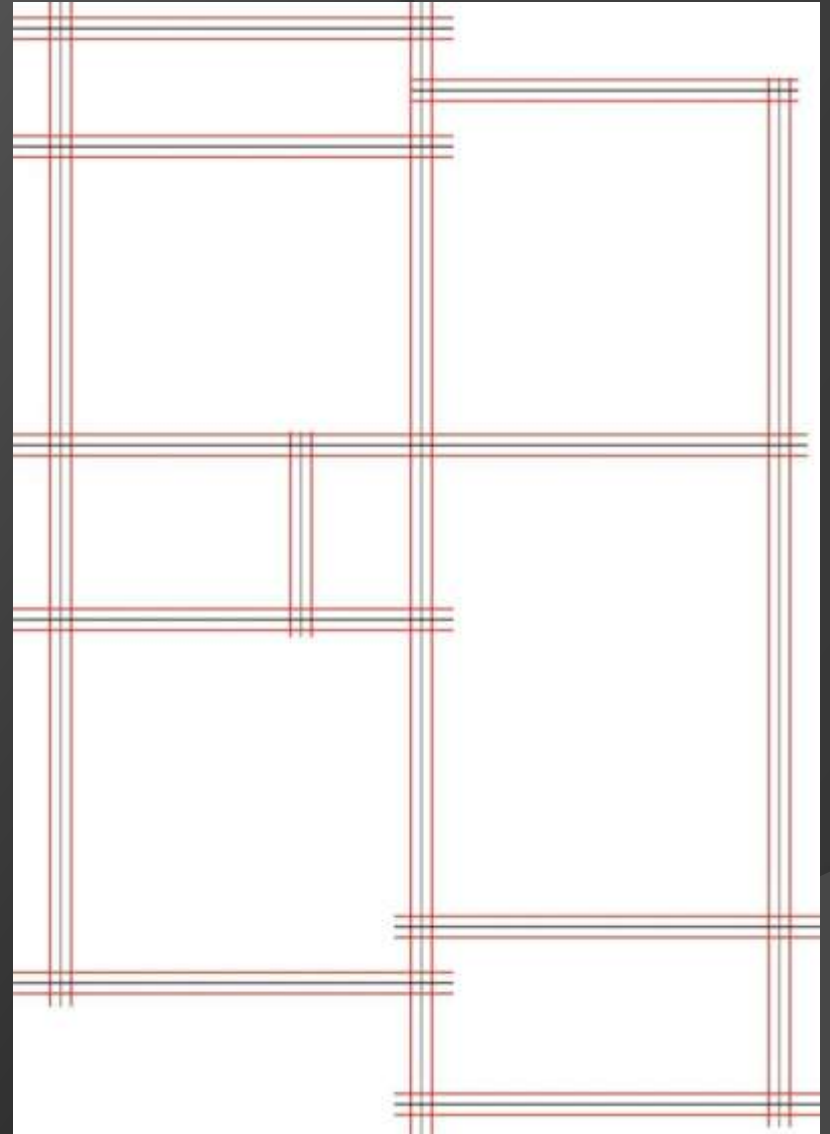
PENG GAMBARAN RENCANA ATAP



I. PENGGAMBARAN GARIS BANTU/TIPIS

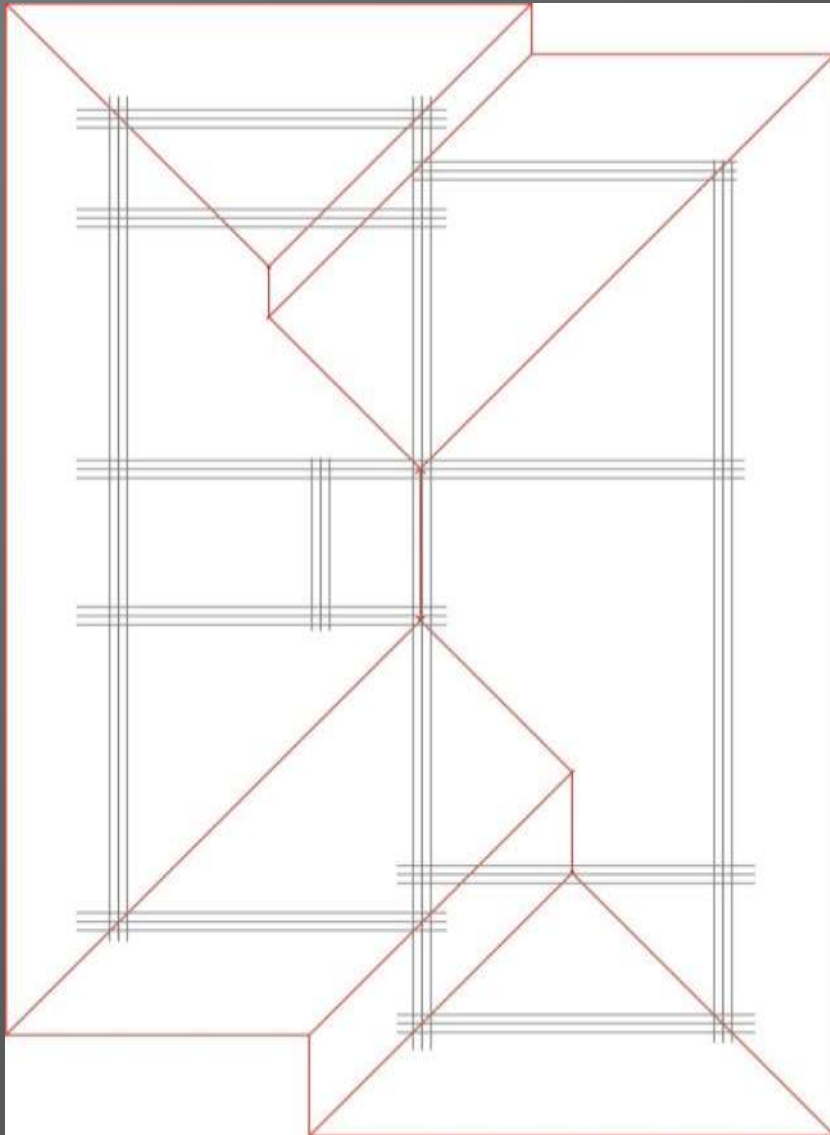


1. Gambar garis 'as' dinding

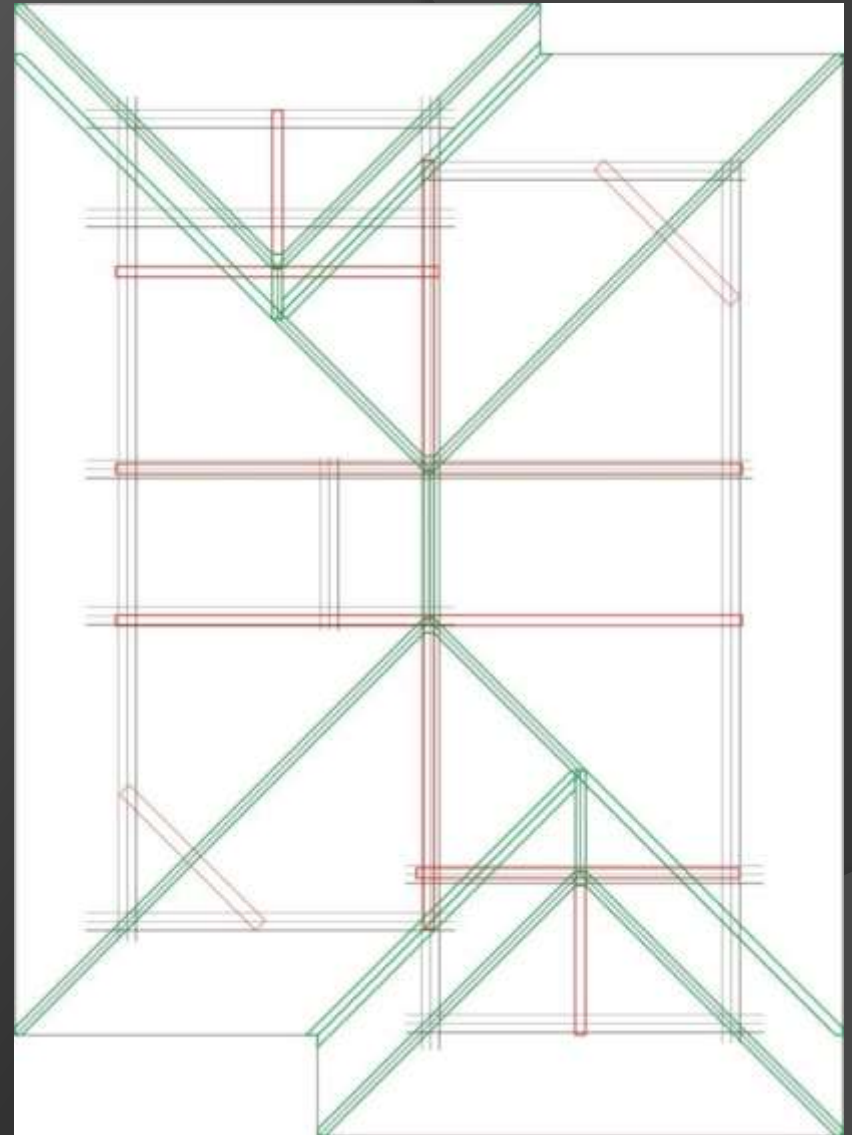


2. Gambar ketebalan dinding

I. PENGGAMBARAN GARIS BANTU/TIPIS

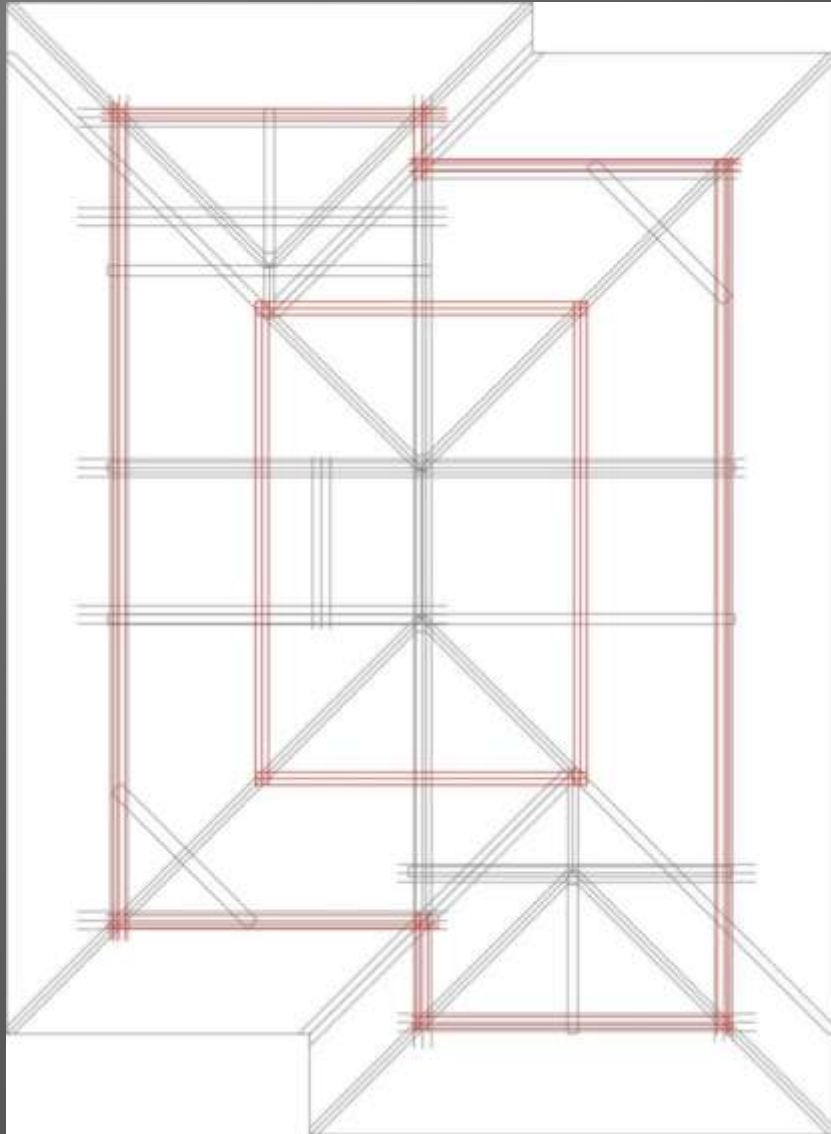


3. Gambar garis atap

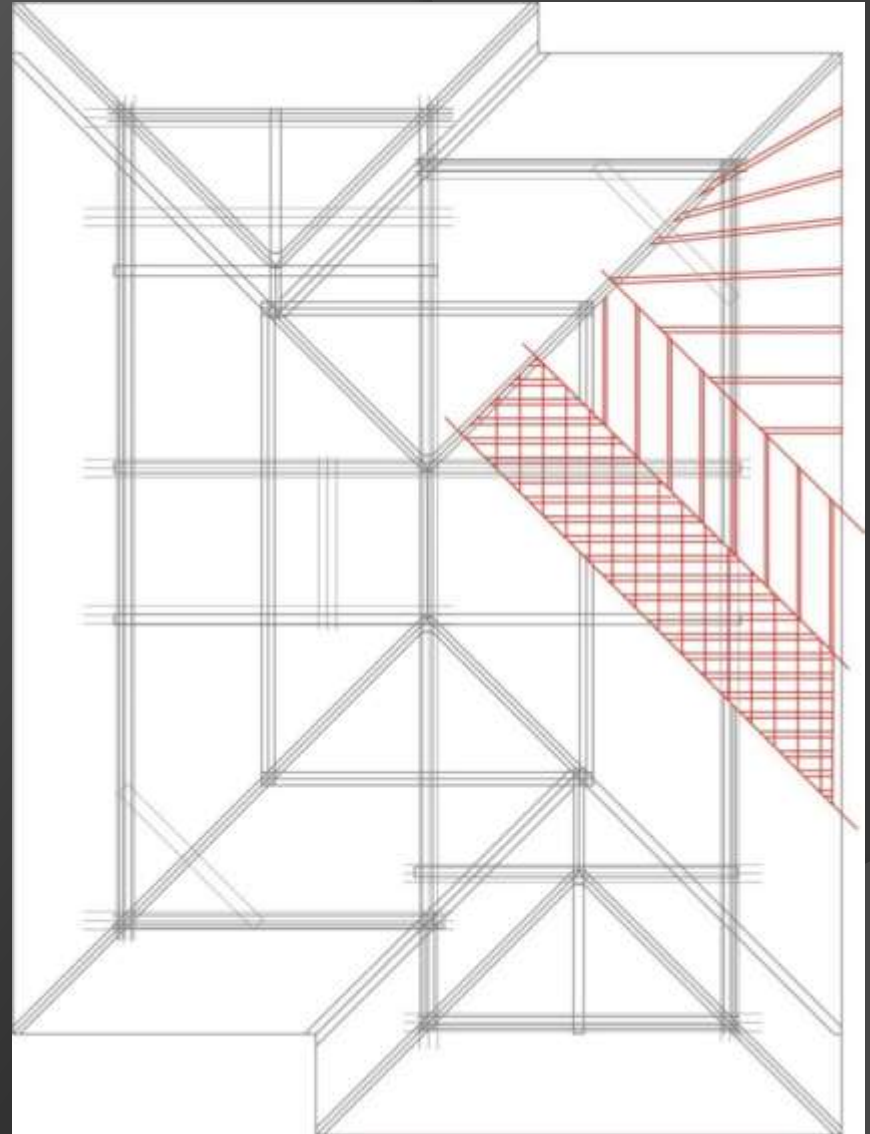


4. Gambar garis jurai dan kuda-kuda

I. PENG GAMBARAN GARIS BANTU/TIPIS

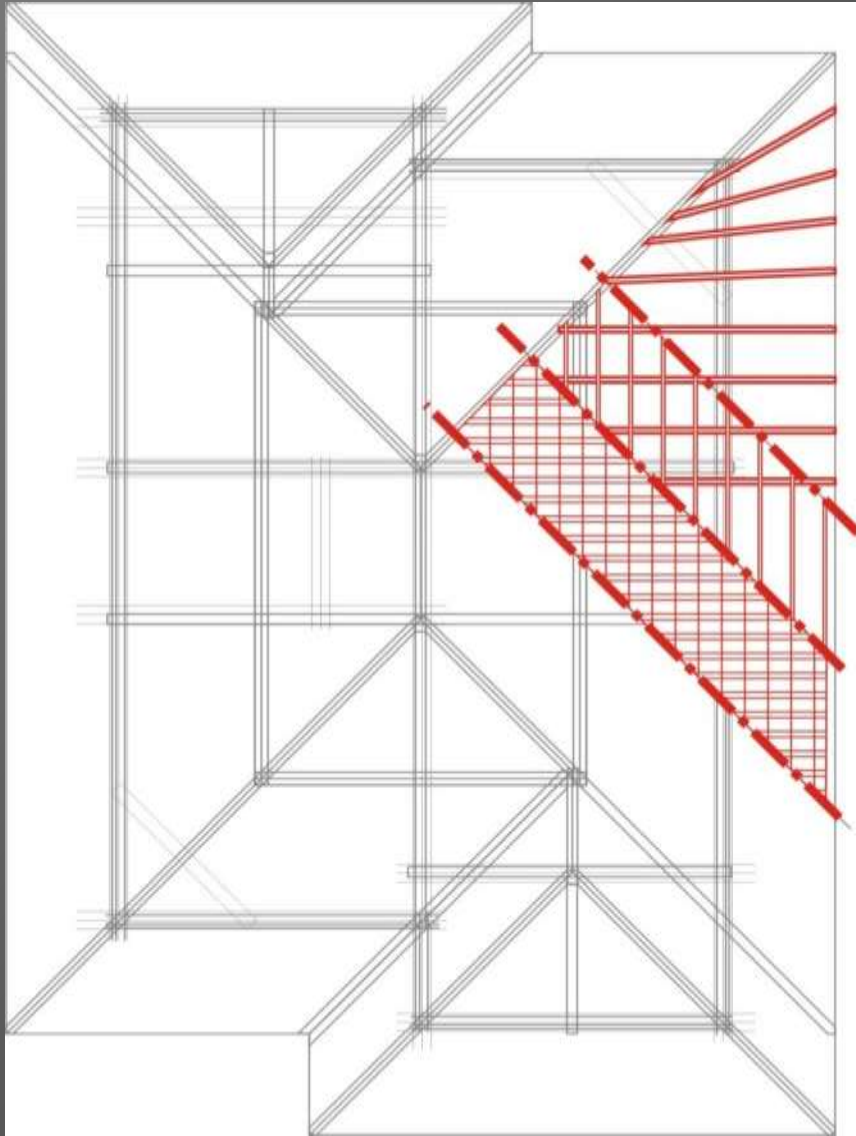


5. Gambar garis gording dan balok dinding

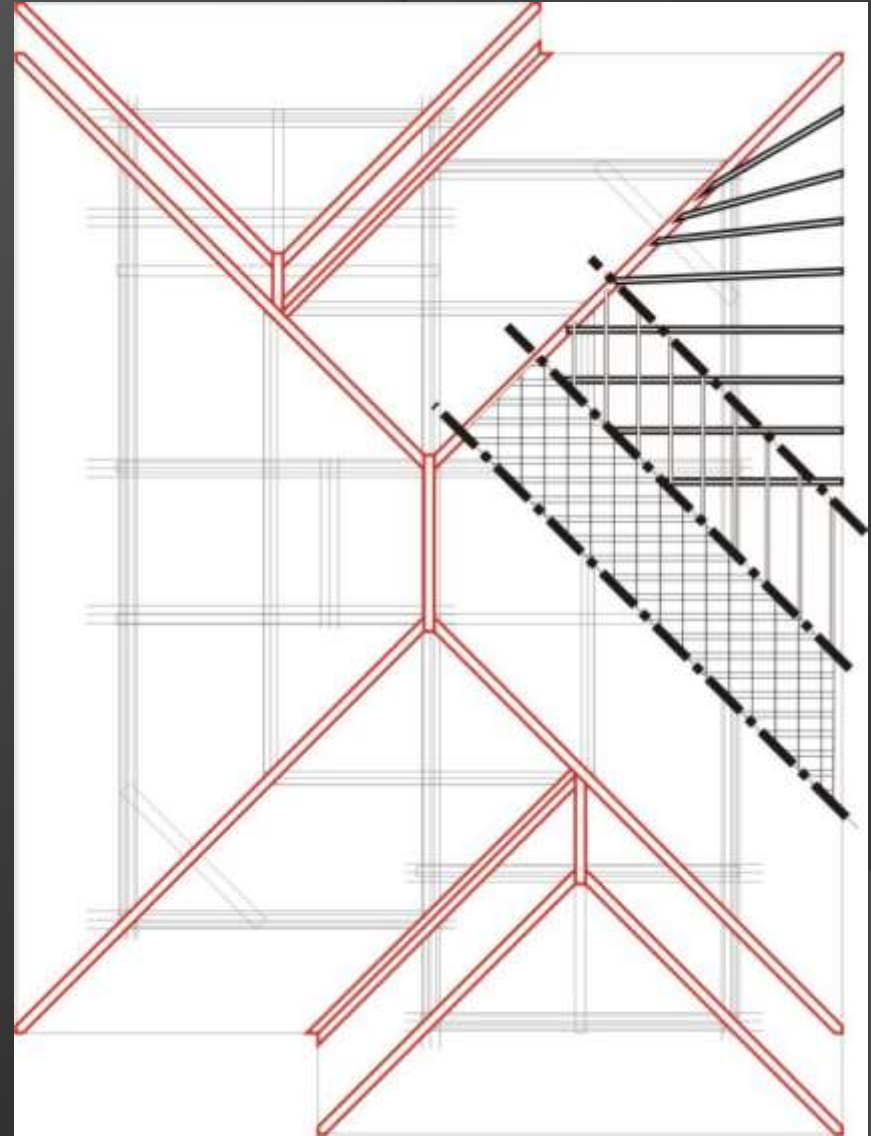


6. Gambar potongan bidang kasau, reng dan penutup atap

II. PENEBALAN GARIS GAMBAR

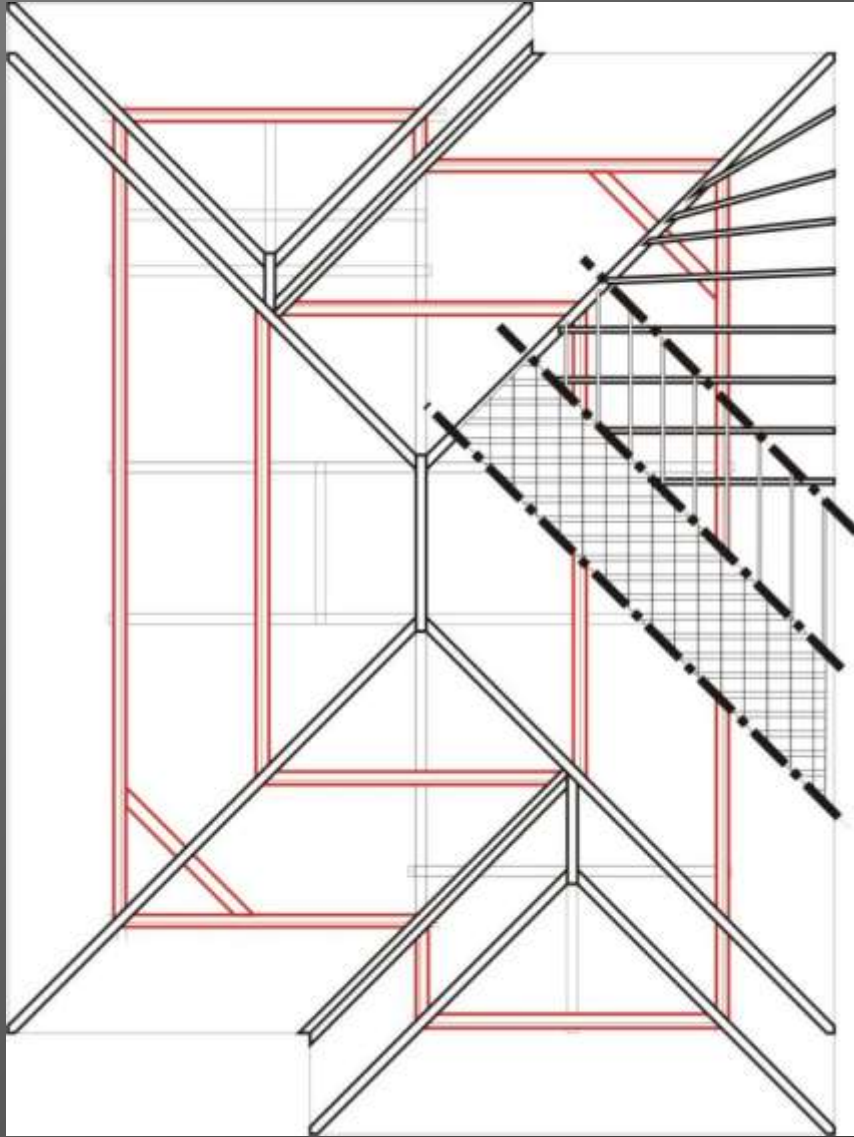


1. Tebalkan dahulu garis-garis dibidang potongan Kasau, Reng dan Atap. **PERHATIKAN MANA GARIS YANG BERADA DI ATAS GARIS LAINNYA !!**

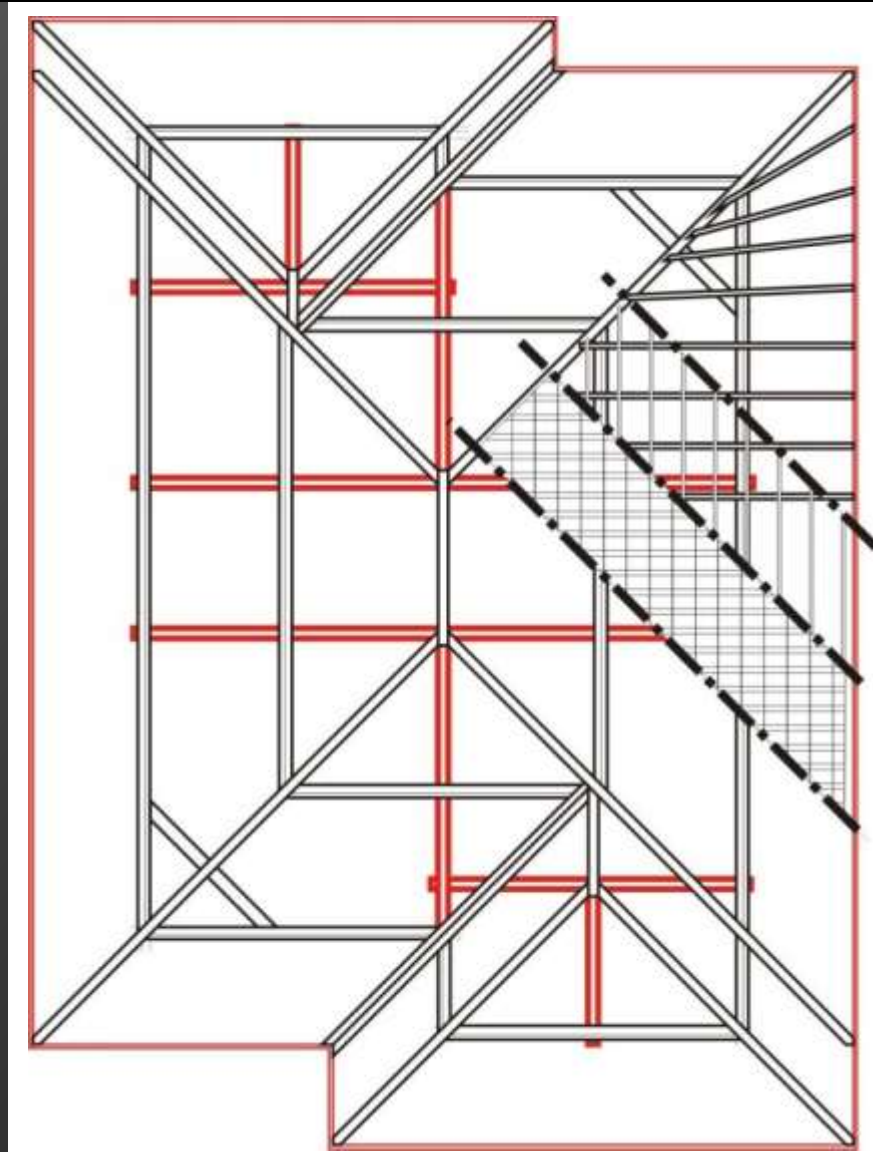


2. Tebalkan Garis Jurai dan Nok

II. PENEBALAN GARIS GAMBAR

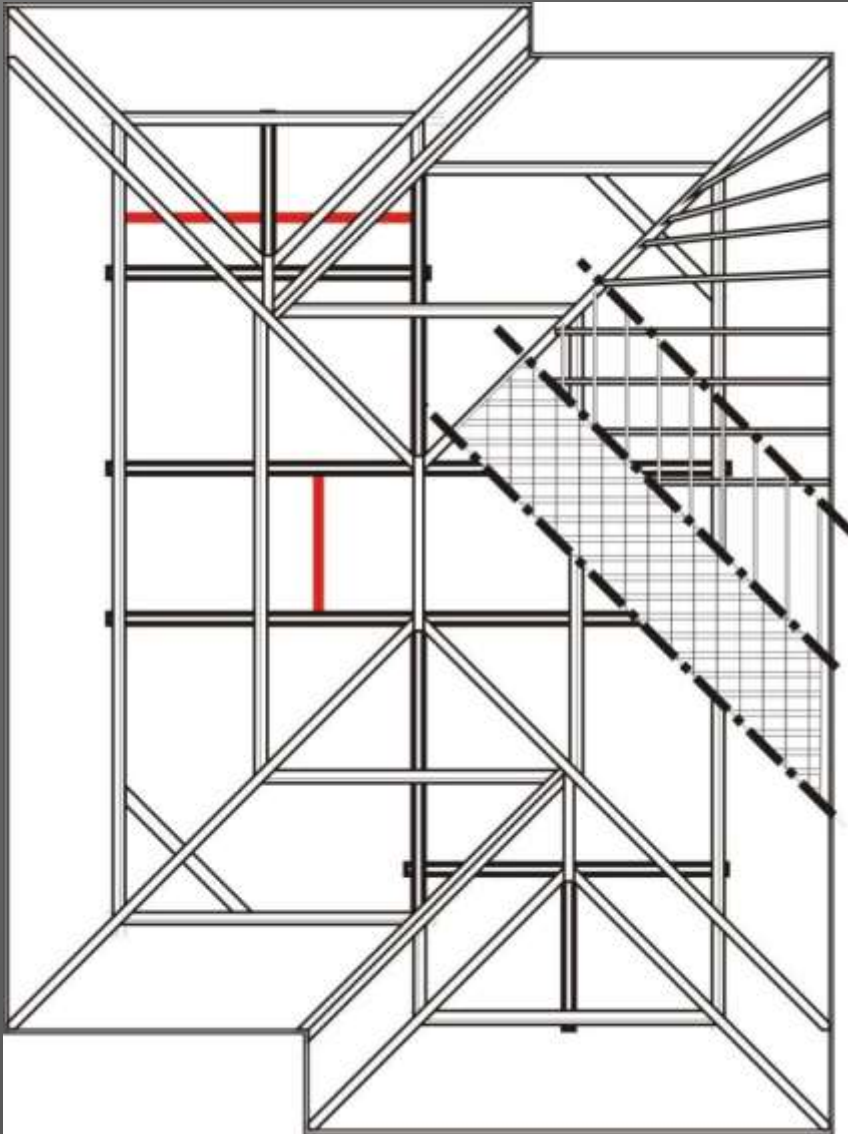


3. Tebalkan garis gording dan balok dinding.
PERHATIKAN MANA GARIS YANG BERADA DI ATAS GARIS LAINNYA !!

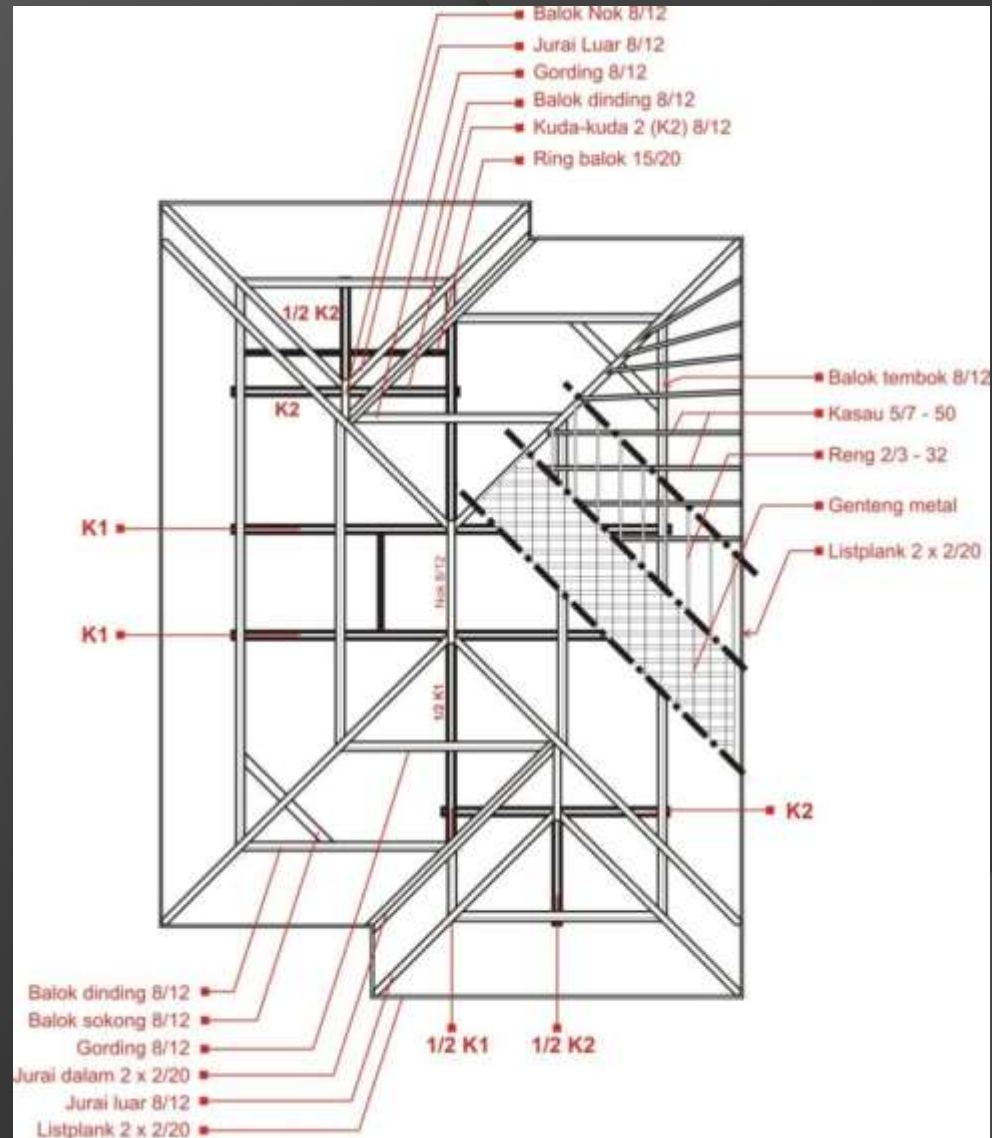


4. Tebalkan garis kuda-kuda dan listplank.
PERHATIKAN MANA GARIS YANG BERADA DI ATAS GARIS LAINNYA !!

II. PENEBALAN GARIS GAMBAR



5. Tebalkan garis ring balok yang masih terlihat (tidak tertutup oleh objek lain). Ring balok dapat di blok/ditebalkan.



6. Tambahkan keterangan gambar, berupa penjelasan elemen rangka atap

