

Contoh 1

Gelombang dengan periode 10 detik terjadi di laut dengan kedalaman 30 m. Hitung panjang dan cepat rambat gelombang. Hitung pula panjang dan cepat rambat gelombang pada kedalaman 5 m.

Penyelesaian

Panjang gelombang dapat dihitung dengan menggunakan Persamaan (3.3) atau Lampiran A-1 dalam Lampiran A. Penyelesaian berdasar Persamaan (3.3) dilakukan dengan cara iterasi (coba banding). Dalam contoh hitungan ini digunakan Lampiran A-1 dengan prosedur hitungan berikut ini.

Panjang gelombang di laut dalam (Persamaan 3.5) :

$$L_0 = 1,56T^2 = 1,56 \times 10^2 = 156 \text{ m}$$

Untuk kedalaman 30 m :

$$\frac{d}{L_0} = \frac{30}{156} = 0,1923$$

Dengan Lampiran A-1 untuk nilai d/L_0 didapat nilai d/L (dengan interpolasi):

$$\frac{d}{L} = 0,21839 + \frac{0,0003}{0,001}(0,21923 - 0,21839) = 0,218642$$

$$\text{Panjang gelombang : } L = \frac{30}{0,218642} = 137,2 \text{ m}$$

$$\text{Cepat rambat gelombang : } C = \frac{L}{T} = \frac{137,2}{10} = 13,72 \text{ m/d}$$

Untuk $d = 5 \text{ m}$:

$$\frac{d}{L_0} = \frac{5}{156} = 0,032 \rightarrow \frac{d}{L} = 0,07385$$

$$\text{Panjang gelombang : } L = \frac{5}{0,07385} = 67,6 \text{ m}$$

$$\text{Cepat rambat gelombang : } C = \frac{67,6}{10} = 6,76 \text{ m/d}$$

Tabel A-1. Fungsi d/L untuk pertambahan nilai d/L_0

$\frac{d}{L_0}$	$\frac{d}{L}$	$\frac{2\pi d}{L}$	$\tanh \frac{2\pi d}{L}$	$\sinh \frac{2\pi d}{L}$	$\cosh \frac{2\pi d}{L}$	K_s	K	$\frac{4\pi d}{L}$	$\sinh \frac{4\pi d}{L}$	$\cosh \frac{4\pi d}{L}$	n
0	0	0	0	0	1	∞	1	0	0	1	1
0.0001	0.00399	0.0251	0.0251	0.0251	1.0003	4.467	0.9997	0.0501	0.0502	1.001	0.9998
0.0002	0.00564	0.0355	0.0354	0.0355	1.0006	3.757	0.9994	0.0709	0.0710	1.003	0.9996
0.0003	0.00691	0.0434	0.0434	0.0434	1.0009	3.395	0.9991	0.0869	0.0870	1.004	0.9994
0.0004	0.00798	0.0502	0.0501	0.0502	1.0013	3.160	0.9987	0.1003	0.1005	1.005	0.9992
0.0005	0.00893	0.0561	0.0560	0.0561	1.0016	2.989	0.9984	0.1122	0.1124	1.006	0.9990
0.0006	0.00978	0.0614	0.0614	0.0615	1.0019	2.856	0.9981	0.1229	0.1232	1.008	0.9987
0.0007	0.01056	0.0664	0.0663	0.0664	1.0022	2.749	0.9978	0.1327	0.1331	1.009	0.9985
0.0008	0.01129	0.0710	0.0708	0.0710	1.0025	2.659	0.9975	0.1419	0.1424	1.010	0.9983
0.0009	0.01198	0.0753	0.0751	0.0753	1.0028	2.582	0.9972	0.1505	0.1511	1.011	0.9981
0.0010	0.01263	0.0793	0.0792	0.0794	1.0031	2.515	0.9969	0.1587	0.1594	1.013	0.9979
0.0011	0.01325	0.0832	0.0830	0.0833	1.0035	2.457	0.9965	0.1665	0.1672	1.014	0.9977
0.0012	0.01384	0.0869	0.0867	0.0871	1.0038	2.404	0.9962	0.1739	0.1748	1.015	0.9975
0.0013	0.01440	0.0905	0.0903	0.0906	1.0041	2.357	0.9959	0.1810	0.1820	1.016	0.9973
0.0014	0.01495	0.0939	0.0937	0.0941	1.0044	2.314	0.9956	0.1879	0.1890	1.018	0.9971
0.0015	0.01548	0.0972	0.0969	0.0974	1.0047	2.275	0.9953	0.1945	0.1957	1.019	0.9969
0.0016	0.01598	0.1004	0.1001	0.1006	1.0050	2.239	0.9950	0.2009	0.2022	1.020	0.9967
0.0017	0.01648	0.1035	0.1032	0.1037	1.0054	2.205	0.9947	0.2071	0.2086	1.022	0.9964
0.0018	0.01696	0.1065	0.1061	0.1067	1.0057	2.174	0.9944	0.2131	0.2147	1.023	0.9962
0.0019	0.01742	0.1095	0.1090	0.1097	1.0060	2.146	0.9940	0.2190	0.2207	1.024	0.9960
0.0020	0.01788	0.1123	0.1119	0.1126	1.0063	2.119	0.9937	0.2247	0.2266	1.025	0.9958
0.0021	0.01832	0.1151	0.1146	0.1154	1.0066	2.093	0.9934	0.2302	0.2323	1.027	0.9956
0.0022	0.01876	0.1178	0.1173	0.1181	1.0070	2.069	0.9931	0.2357	0.2379	1.028	0.9954
0.0023	0.01918	0.1205	0.1199	0.1208	1.0073	2.047	0.9928	0.2410	0.2433	1.029	0.9952
0.0024	0.01959	0.1231	0.1225	0.1234	1.0076	2.025	0.9925	0.2462	0.2487	1.030	0.9950
0.0025	0.02000	0.1257	0.1250	0.1260	1.0079	2.005	0.9922	0.2513	0.2540	1.032	0.9948
0.0026	0.02040	0.1282	0.1275	0.1285	1.0082	1.986	0.9918	0.2563	0.2591	1.033	0.9946
0.0027	0.02079	0.1306	0.1299	0.1310	1.0085	1.968	0.9915	0.2612	0.2642	1.034	0.9944
0.0028	0.02117	0.1330	0.1322	0.1334	1.0089	1.950	0.9912	0.2661	0.2692	1.036	0.9941
0.0029	0.02155	0.1354	0.1346	0.1358	1.0092	1.933	0.9909	0.2708	0.2741	1.037	0.9939

Tabel A-1. Lanjutan

$\frac{d}{L_0}$	$\frac{d}{L}$	$\frac{2\pi d}{L}$	$\tanh \frac{2\pi d}{L}$	$\sinh \frac{2\pi d}{L}$	$\cosh \frac{2\pi d}{L}$	K_s	K	$\frac{4\pi d}{L}$	$\sinh \frac{4\pi d}{L}$	$\cosh \frac{4\pi d}{L}$	n
0.0030	0.02192	0.1377	0.1369	0.1382	1.0095	1.917	0.9906	0.2755	0.2789	1.038	0.9937
0.0031	0.02228	0.1400	0.1391	0.1405	1.0098	1.902	0.9903	0.2800	0.2837	1.039	0.9935
0.0032	0.02264	0.1423	0.1413	0.1428	1.0101	1.887	0.9900	0.2845	0.2884	1.041	0.9933
0.0033	0.02300	0.1445	0.1435	0.1450	1.0105	1.873	0.9897	0.2890	0.2930	1.042	0.9931
0.0034	0.02335	0.1467	0.1456	0.1472	1.0108	1.859	0.9893	0.2934	0.2976	1.043	0.9929
0.0035	0.02369	0.1488	0.1478	0.1494	1.0111	1.846	0.9890	0.2977	0.3021	1.045	0.9927
0.0036	0.02403	0.1510	0.1498	0.1515	1.0114	1.834	0.9887	0.3019	0.3065	1.046	0.9925
0.0037	0.02436	0.1531	0.1519	0.1537	1.0117	1.821	0.9884	0.3061	0.3109	1.047	0.9923
0.0038	0.02469	0.1551	0.1539	0.1558	1.0121	1.810	0.9881	0.3103	0.3153	1.049	0.9921
0.0039	0.02502	0.1572	0.1559	0.1578	1.0124	1.798	0.9878	0.3144	0.3196	1.050	0.9919
0.0040	0.02534	0.1592	0.1579	0.1599	1.0127	1.787	0.9875	0.3184	0.3238	1.051	0.9917
0.0041	0.02565	0.1612	0.1598	0.1619	1.0130	1.776	0.9871	0.3224	0.3280	1.052	0.9914
0.0042	0.02597	0.1632	0.1617	0.1639	1.0133	1.766	0.9868	0.3263	0.3322	1.054	0.9912
0.0043	0.02628	0.1651	0.1636	0.1659	1.0137	1.756	0.9865	0.3302	0.3363	1.055	0.9910
0.0044	0.02659	0.1670	0.1655	0.1678	1.0140	1.746	0.9862	0.3341	0.3403	1.056	0.9908
0.0045	0.02689	0.1689	0.1674	0.1698	1.0143	1.737	0.9859	0.3379	0.3444	1.058	0.9906
0.0046	0.02719	0.1708	0.1692	0.1717	1.0146	1.727	0.9856	0.3417	0.3483	1.059	0.9904
0.0047	0.02749	0.1727	0.1710	0.1736	1.0149	1.718	0.9853	0.3454	0.3523	1.060	0.9902
0.0048	0.02778	0.1745	0.1728	0.1754	1.0153	1.710	0.9850	0.3491	0.3562	1.062	0.9900
0.0049	0.02807	0.1764	0.1746	0.1773	1.0156	1.701	0.9846	0.3527	0.3601	1.063	0.9898
0.0050	0.02836	0.1782	0.1763	0.1791	1.0159	1.693	0.9843	0.3564	0.3639	1.064	0.9896
0.0051	0.02864	0.1800	0.1781	0.1809	1.0162	1.685	0.9840	0.3599	0.3678	1.065	0.9894
0.0052	0.02893	0.1817	0.1798	0.1827	1.0166	1.677	0.9837	0.3635	0.3715	1.067	0.9892
0.0053	0.02921	0.1835	0.1815	0.1845	1.0169	1.669	0.9834	0.3670	0.3753	1.068	0.9889
0.0054	0.02948	0.1852	0.1832	0.1863	1.0172	1.662	0.9831	0.3705	0.3790	1.069	0.9887
0.0055	0.02976	0.1870	0.1848	0.1881	1.0175	1.654	0.9828	0.3739	0.3827	1.071	0.9885
0.0056	0.03003	0.1887	0.1865	0.1898	1.0179	1.647	0.9825	0.3774	0.3864	1.072	0.9883
0.0057	0.03030	0.1904	0.1881	0.1915	1.0182	1.640	0.9821	0.3808	0.3900	1.073	0.9881
0.0058	0.03057	0.1921	0.1897	0.1932	1.0185	1.633	0.9818	0.3841	0.3936	1.075	0.9879
0.0059	0.03083	0.1937	0.1913	0.1949	1.0188	1.627	0.9815	0.3875	0.3972	1.076	0.9877

Tabel A-1. Lanjutan

$\frac{d}{L_0}$	$\frac{d}{L}$	$\frac{2\pi d}{L}$	$\tanh \frac{2\pi d}{L}$	$\sinh \frac{2\pi d}{L}$	$\cosh \frac{2\pi d}{L}$	K_s	K	$\frac{4\pi d}{L}$	$\sinh \frac{4\pi d}{L}$	$\cosh \frac{4\pi d}{L}$	n
0.0060	0.03110	0.1954	0.1929	0.1966	1.0191	1.620	0.9812	0.3908	0.4008	1.077	0.9875
0.0061	0.03136	0.1970	0.1945	0.1983	1.0195	1.614	0.9809	0.3941	0.4043	1.079	0.9873
0.0062	0.03162	0.1987	0.1961	0.2000	1.0198	1.607	0.9806	0.3973	0.4079	1.080	0.9871
0.0063	0.03188	0.2003	0.1976	0.2016	1.0201	1.601	0.9803	0.4006	0.4114	1.081	0.9869
0.0064	0.03213	0.2019	0.1992	0.2033	1.0204	1.595	0.9800	0.4038	0.4148	1.083	0.9867
0.0065	0.03238	0.2035	0.2007	0.2049	1.0208	1.589	0.9796	0.4070	0.4183	1.084	0.9865
0.0066	0.03264	0.2051	0.2022	0.2065	1.0211	1.583	0.9793	0.4101	0.4217	1.085	0.9863
0.0067	0.03289	0.2066	0.2037	0.2081	1.0214	1.578	0.9790	0.4133	0.4251	1.087	0.9860
0.0068	0.03313	0.2082	0.2052	0.2097	1.0217	1.572	0.9787	0.4164	0.4285	1.088	0.9858
0.0069	0.03338	0.2097	0.2067	0.2113	1.0221	1.567	0.9784	0.4195	0.4319	1.089	0.9856
0.0070	0.03362	0.2113	0.2082	0.2128	1.0224	1.561	0.9781	0.4225	0.4352	1.091	0.9854
0.0071	0.03387	0.2128	0.2096	0.2144	1.0227	1.556	0.9778	0.4256	0.4386	1.092	0.9852
0.0072	0.03411	0.2143	0.2111	0.2160	1.0231	1.551	0.9775	0.4286	0.4419	1.093	0.9850
0.0073	0.03435	0.2158	0.2125	0.2175	1.0234	1.546	0.9772	0.4316	0.4452	1.095	0.9848
0.0074	0.03459	0.2173	0.2140	0.2190	1.0237	1.541	0.9768	0.4346	0.4484	1.096	0.9846
0.0075	0.03482	0.2188	0.2154	0.2206	1.0240	1.536	0.9765	0.4376	0.4517	1.097	0.9844
0.0076	0.03506	0.2203	0.2168	0.2221	1.0244	1.531	0.9762	0.4406	0.4549	1.099	0.9842
0.0077	0.03529	0.2217	0.2182	0.2236	1.0247	1.526	0.9759	0.4435	0.4582	1.100	0.9840
0.0078	0.03552	0.2232	0.2196	0.2251	1.0250	1.521	0.9756	0.4464	0.4614	1.101	0.9838
0.0079	0.03575	0.2247	0.2209	0.2265	1.0253	1.517	0.9753	0.4493	0.4646	1.103	0.9836
0.0080	0.03598	0.2261	0.2223	0.2280	1.0257	1.512	0.9750	0.4522	0.4678	1.104	0.9834
0.0081	0.03621	0.2275	0.2237	0.2295	1.0260	1.508	0.9747	0.4551	0.4709	1.105	0.9832
0.0082	0.03644	0.2290	0.2250	0.2310	1.0263	1.503	0.9744	0.4579	0.4741	1.107	0.9829
0.0083	0.03666	0.2304	0.2264	0.2324	1.0267	1.499	0.9740	0.4607	0.4772	1.108	0.9827
0.0084	0.03689	0.2318	0.2277	0.2339	1.0270	1.495	0.9737	0.4636	0.4803	1.109	0.9825
0.0085	0.03711	0.2332	0.2290	0.2353	1.0273	1.491	0.9734	0.4664	0.4834	1.111	0.9823
0.0086	0.03733	0.2346	0.2304	0.2367	1.0276	1.487	0.9731	0.4691	0.4865	1.112	0.9821
0.0087	0.03755	0.2360	0.2317	0.2381	1.0280	1.483	0.9728	0.4719	0.4896	1.113	0.9819
0.0088	0.03777	0.2373	0.2330	0.2396	1.0283	1.479	0.9725	0.4747	0.4927	1.115	0.9817
0.0089	0.03799	0.2387	0.2343	0.2410	1.0286	1.475	0.9722	0.4774	0.4957	1.116	0.9815

Tabel A-1. Lanjutan

$\frac{d}{L_0}$	$\frac{d}{L}$	$\frac{2\pi d}{L}$	$\tanh \frac{2\pi d}{L}$	$\sinh \frac{2\pi d}{L}$	$\cosh \frac{2\pi d}{L}$	K_s	K	$\frac{4\pi d}{L}$	$\sinh \frac{4\pi d}{L}$	$\cosh \frac{4\pi d}{L}$	n
0.0090	0.03821	0.2401	0.2356	0.2424	1.0290	1.471	0.9719	0.4801	0.4988	1.117	0.9813
0.0091	0.03842	0.2414	0.2368	0.2438	1.0293	1.467	0.9715	0.4828	0.5018	1.119	0.9811
0.0092	0.03864	0.2428	0.2381	0.2452	1.0296	1.463	0.9712	0.4855	0.5048	1.120	0.9809
0.0093	0.03885	0.2441	0.2394	0.2465	1.0299	1.459	0.9709	0.4882	0.5078	1.122	0.9807
0.0094	0.03906	0.2454	0.2406	0.2479	1.0303	1.456	0.9706	0.4909	0.5108	1.123	0.9805
0.0095	0.03928	0.2468	0.2419	0.2493	1.0306	1.452	0.9703	0.4935	0.5138	1.124	0.9803
0.0096	0.03949	0.2481	0.2431	0.2506	1.0309	1.449	0.9700	0.4962	0.5168	1.126	0.9801
0.0097	0.03969	0.2494	0.2444	0.2520	1.0313	1.445	0.9697	0.4988	0.5198	1.127	0.9799
0.0098	0.03990	0.2507	0.2456	0.2534	1.0316	1.442	0.9694	0.5014	0.5227	1.128	0.9796
0.0099	0.04011	0.2520	0.2468	0.2547	1.0319	1.438	0.9691	0.5040	0.5257	1.130	0.9794
0.0100	0.04032	0.2533	0.2480	0.2560	1.0323	1.435	0.9688	0.5066	0.5286	1.131	0.9792
0.0110	0.04233	0.2660	0.2599	0.2691	1.0356	1.403	0.9656	0.5319	0.5574	1.145	0.9772
0.0120	0.04426	0.2781	0.2711	0.2817	1.0389	1.375	0.9625	0.5562	0.5853	1.159	0.9751
0.0130	0.04612	0.2897	0.2819	0.2938	1.0423	1.350	0.9594	0.5795	0.6125	1.173	0.9731
0.0140	0.04791	0.3010	0.2922	0.3056	1.0456	1.327	0.9563	0.6020	0.6390	1.187	0.9710
0.0150	0.04964	0.3119	0.3022	0.3170	1.0490	1.307	0.9533	0.6238	0.6651	1.201	0.9690
0.0160	0.05132	0.3225	0.3117	0.3281	1.0524	1.288	0.9502	0.6450	0.6906	1.215	0.9669
0.0170	0.05296	0.3328	0.3210	0.3389	1.0559	1.271	0.9471	0.6655	0.7157	1.230	0.9649
0.0180	0.05455	0.3428	0.3299	0.3495	1.0593	1.255	0.9440	0.6855	0.7405	1.244	0.9629
0.0190	0.05611	0.3525	0.3386	0.3599	1.0628	1.240	0.9409	0.7051	0.7650	1.259	0.9609
0.0200	0.05763	0.3621	0.3471	0.3701	1.0663	1.226	0.9378	0.7242	0.7892	1.274	0.9588
0.0210	0.05911	0.3714	0.3552	0.3800	1.0698	1.213	0.9348	0.7429	0.8131	1.289	0.9568
0.0220	0.06057	0.3806	0.3632	0.3898	1.0733	1.201	0.9317	0.7612	0.8368	1.304	0.9548
0.0230	0.06200	0.3896	0.3710	0.3995	1.0768	1.189	0.9286	0.7791	0.8603	1.319	0.9528
0.0240	0.06340	0.3984	0.3785	0.4090	1.0804	1.179	0.9256	0.7967	0.8837	1.335	0.9508
0.0250	0.06478	0.4070	0.3859	0.4183	1.0840	1.169	0.9225	0.8140	0.9070	1.350	0.9488
0.0260	0.06613	0.4155	0.3932	0.4276	1.0876	1.159	0.9195	0.8310	0.9301	1.366	0.9468
0.0270	0.06747	0.4239	0.4002	0.4367	1.0912	1.150	0.9164	0.8478	0.9531	1.381	0.9448
0.0280	0.06878	0.4321	0.4071	0.4457	1.0948	1.141	0.9134	0.8643	0.9760	1.397	0.9428
0.0290	0.07007	0.4403	0.4139	0.4546	1.0985	1.133	0.9103	0.8805	0.9988	1.413	0.9408

Tabel A-1. Lanjutan

$\frac{d}{L_0}$	$\frac{d}{L}$	$\frac{2\pi d}{L}$	$\tanh \frac{2\pi d}{L}$	$\sinh \frac{2\pi d}{L}$	$\cosh \frac{2\pi d}{L}$	K_s	K	$\frac{4\pi d}{L}$	$\sinh \frac{4\pi d}{L}$	$\cosh \frac{4\pi d}{L}$	n
0.0300	0.07135	0.4483	0.4205	0.4634	1.1022	1.125	0.9073	0.8966	1.0216	1.430	0.9388
0.0310	0.07260	0.4562	0.4270	0.4722	1.1059	1.118	0.9043	0.9124	1.0443	1.446	0.9368
0.0320	0.07385	0.4640	0.4333	0.4808	1.1096	1.111	0.9012	0.9280	1.0670	1.462	0.9348
0.0330	0.07507	0.4717	0.4396	0.4894	1.1133	1.104	0.8982	0.9434	1.0897	1.479	0.9329
0.0340	0.07629	0.4793	0.4457	0.4979	1.1171	1.098	0.8952	0.9586	1.1124	1.496	0.9309
0.0350	0.07748	0.4868	0.4517	0.5063	1.1209	1.092	0.8922	0.9737	1.1350	1.513	0.9289
0.0360	0.07867	0.4943	0.4576	0.5147	1.1247	1.086	0.8892	0.9886	1.1577	1.530	0.9270
0.0370	0.07984	0.5017	0.4634	0.5230	1.1285	1.080	0.8861	1.0033	1.1803	1.547	0.9250
0.0380	0.08100	0.5089	0.4691	0.5312	1.1323	1.075	0.8831	1.0179	1.2030	1.564	0.9231
0.0390	0.08215	0.5162	0.4747	0.5394	1.1362	1.069	0.8801	1.0323	1.2257	1.582	0.9211
0.0400	0.08329	0.5233	0.4803	0.5475	1.1401	1.064	0.8771	1.0466	1.2485	1.600	0.9192
0.0410	0.08442	0.5304	0.4857	0.5556	1.1440	1.059	0.8741	1.0608	1.2713	1.617	0.9172
0.0420	0.08553	0.5374	0.4910	0.5637	1.1479	1.055	0.8711	1.0748	1.2941	1.635	0.9153
0.0430	0.08664	0.5444	0.4963	0.5717	1.1519	1.050	0.8682	1.0888	1.3170	1.654	0.9134
0.0440	0.08774	0.5513	0.5015	0.5796	1.1558	1.046	0.8652	1.1026	1.3399	1.672	0.9114
0.0450	0.08883	0.5581	0.5066	0.5876	1.1598	1.042	0.8622	1.1163	1.3630	1.690	0.9095
0.0460	0.08991	0.5649	0.5116	0.5955	1.1639	1.038	0.8592	1.1298	1.3860	1.709	0.9076
0.0470	0.09098	0.5717	0.5166	0.6033	1.1679	1.034	0.8562	1.1433	1.4092	1.728	0.9057
0.0480	0.09205	0.5784	0.5215	0.6111	1.1720	1.030	0.8533	1.1567	1.4325	1.747	0.9037
0.0490	0.09311	0.5850	0.5263	0.6189	1.1760	1.026	0.8503	1.1700	1.4558	1.766	0.9018
0.0500	0.09415	0.5916	0.5310	0.6267	1.1802	1.023	0.8473	1.1832	1.4792	1.786	0.8999
0.0510	0.09520	0.5981	0.5357	0.6345	1.1843	1.019	0.8444	1.1963	1.5028	1.805	0.8980
0.0520	0.09623	0.6047	0.5404	0.6422	1.1884	1.016	0.8414	1.2093	1.5264	1.825	0.8961
0.0530	0.09726	0.6111	0.5449	0.6499	1.1926	1.013	0.8385	1.2222	1.5501	1.845	0.8942
0.0540	0.09829	0.6175	0.5494	0.6576	1.1968	1.010	0.8355	1.2351	1.5739	1.865	0.8924
0.0550	0.09930	0.6239	0.5539	0.6652	1.2010	1.007	0.8326	1.2479	1.5979	1.885	0.8905
0.0560	0.10031	0.6303	0.5583	0.6729	1.2053	1.004	0.8297	1.2606	1.6220	1.905	0.8886
0.0570	0.10132	0.6366	0.5626	0.6805	1.2096	1.001	0.8267	1.2732	1.6462	1.926	0.8867
0.0580	0.10232	0.6429	0.5669	0.6881	1.2139	0.998	0.8238	1.2858	1.6705	1.947	0.8848
0.0590	0.10331	0.6491	0.5711	0.6957	1.2182	0.996	0.8209	1.2983	1.6950	1.968	0.8830

Tabel A-1. Lanjutan

$\frac{d}{L_0}$	$\frac{d}{L}$	$\frac{2\pi d}{L}$	$\tanh \frac{2\pi d}{L}$	$\sinh \frac{2\pi d}{L}$	$\cosh \frac{2\pi d}{L}$	K_s	K	$\frac{4\pi d}{L}$	$\sinh \frac{4\pi d}{L}$	$\cosh \frac{4\pi d}{L}$	n
0.0600	0.10430	0.6553	0.5753	0.7033	1.2225	0.993	0.8180	1.3107	1.7195	1.989	0.8811
0.0610	0.10529	0.6615	0.5794	0.7108	1.2269	0.991	0.8151	1.3231	1.7443	2.011	0.8793
0.0620	0.10626	0.6677	0.5835	0.7184	1.2313	0.988	0.8121	1.3354	1.7691	2.032	0.8774
0.0630	0.10724	0.6738	0.5875	0.7260	1.2357	0.986	0.8092	1.3476	1.7942	2.054	0.8756
0.0640	0.10821	0.6799	0.5915	0.7335	1.2402	0.984	0.8063	1.3598	1.8193	2.076	0.8737
0.0650	0.10917	0.6860	0.5954	0.7410	1.2446	0.981	0.8034	1.3719	1.8446	2.098	0.8719
0.0660	0.11014	0.6920	0.5993	0.7486	1.2491	0.979	0.8006	1.3840	1.8701	2.121	0.8700
0.0670	0.11109	0.6980	0.6031	0.7561	1.2537	0.977	0.7977	1.3960	1.8958	2.143	0.8682
0.0680	0.11204	0.7040	0.6069	0.7636	1.2582	0.975	0.7948	1.4080	1.9216	2.166	0.8664
0.0690	0.11299	0.7100	0.6107	0.7711	1.2628	0.973	0.7919	1.4199	1.9475	2.189	0.8645
0.0700	0.11394	0.7159	0.6144	0.7786	1.2674	0.971	0.7890	1.4318	1.9737	2.213	0.8627
0.0710	0.11488	0.7218	0.6180	0.7861	1.2720	0.969	0.7862	1.4436	2.0000	2.236	0.8609
0.0720	0.11582	0.7277	0.6217	0.7937	1.2767	0.968	0.7833	1.4554	2.0265	2.260	0.8591
0.0730	0.11675	0.7336	0.6253	0.8012	1.2814	0.966	0.7804	1.4672	2.0532	2.284	0.8573
0.0740	0.11768	0.7394	0.6288	0.8087	1.2861	0.964	0.7776	1.4789	2.0800	2.308	0.8555
0.0750	0.11861	0.7453	0.6323	0.8162	1.2908	0.962	0.7747	1.4905	2.1071	2.332	0.8537
0.0760	0.11954	0.7511	0.6358	0.8237	1.2956	0.961	0.7719	1.5021	2.1343	2.357	0.8519
0.0770	0.12046	0.7569	0.6392	0.8312	1.3004	0.959	0.7690	1.5137	2.1618	2.382	0.8501
0.0780	0.12138	0.7626	0.6426	0.8387	1.3052	0.958	0.7662	1.5253	2.1894	2.407	0.8483
0.0790	0.12229	0.7684	0.6460	0.8463	1.3100	0.956	0.7633	1.5368	2.2173	2.432	0.8465
0.0800	0.12321	0.7741	0.6493	0.8538	1.3149	0.955	0.7605	1.5482	2.2453	2.458	0.8448
0.0810	0.12412	0.7798	0.6526	0.8613	1.3198	0.953	0.7577	1.5597	2.2736	2.484	0.8430
0.0820	0.12502	0.7855	0.6559	0.8689	1.3247	0.952	0.7549	1.5711	2.3020	2.510	0.8412
0.0830	0.12593	0.7912	0.6591	0.8764	1.3297	0.951	0.7521	1.5825	2.3307	2.536	0.8395
0.0840	0.12683	0.7969	0.6623	0.8840	1.3347	0.949	0.7492	1.5938	2.3596	2.563	0.8377
0.0850	0.12773	0.8026	0.6655	0.8915	1.3397	0.948	0.7464	1.6051	2.3888	2.590	0.8360
0.0860	0.12863	0.8082	0.6686	0.8991	1.3448	0.947	0.7436	1.6164	2.4181	2.617	0.8342
0.0870	0.12952	0.8138	0.6717	0.9067	1.3498	0.946	0.7408	1.6276	2.4477	2.644	0.8325
0.0880	0.13042	0.8194	0.6748	0.9143	1.3549	0.944	0.7380	1.6389	2.4776	2.672	0.8307
0.0890	0.13131	0.8250	0.6778	0.9219	1.3601	0.943	0.7352	1.6501	2.5076	2.700	0.8290

Tabel A-1. Lanjutan

$\frac{d}{L_0}$	$\frac{d}{L}$	$\frac{2\pi d}{L}$	$\tanh \frac{2\pi d}{L}$	$\sinh \frac{2\pi d}{L}$	$\cosh \frac{2\pi d}{L}$	K_s	K	$\frac{4\pi d}{L}$	$\sinh \frac{4\pi d}{L}$	$\cosh \frac{4\pi d}{L}$	n
0.0900	0.13220	0.8306	0.6808	0.9295	1.3653	0.942	0.7325	1.6612	2.5379	2.728	0.8273
0.0910	0.13308	0.8362	0.6838	0.9371	1.3705	0.941	0.7297	1.6724	2.5685	2.756	0.8256
0.0920	0.13397	0.8417	0.6867	0.9447	1.3757	0.940	0.7269	1.6835	2.5993	2.785	0.8238
0.0930	0.13485	0.8473	0.6897	0.9524	1.3809	0.939	0.7241	1.6946	2.6304	2.814	0.8221
0.0940	0.13573	0.8528	0.6925	0.9600	1.3862	0.938	0.7214	1.7057	2.6617	2.843	0.8204
0.0950	0.13661	0.8584	0.6954	0.9677	1.3916	0.937	0.7186	1.7167	2.6932	2.873	0.8187
0.0960	0.13749	0.8639	0.6982	0.9754	1.3969	0.936	0.7159	1.7277	2.7251	2.903	0.8170
0.0970	0.13836	0.8694	0.7011	0.9831	1.4023	0.935	0.7131	1.7387	2.7572	2.933	0.8153
0.0980	0.13924	0.8749	0.7038	0.9908	1.4077	0.934	0.7104	1.7497	2.7896	2.963	0.8136
0.0990	0.14011	0.8803	0.7066	0.9985	1.4132	0.934	0.7076	1.7607	2.8222	2.994	0.8119
0.1000	0.14098	0.8858	0.7093	1.0063	1.4187	0.933	0.7049	1.7716	2.8551	3.025	0.8102
0.1010	0.14185	0.8913	0.7120	1.0140	1.4242	0.932	0.7022	1.7825	2.8884	3.057	0.8086
0.1020	0.14272	0.8967	0.7147	1.0218	1.4297	0.931	0.6994	1.7934	2.9219	3.088	0.8069
0.1030	0.14358	0.9022	0.7174	1.0296	1.4353	0.930	0.6967	1.8043	2.9557	3.120	0.8052
0.1040	0.14445	0.9076	0.7200	1.0374	1.4409	0.930	0.6940	1.8152	2.9897	3.153	0.8036
0.1050	0.14531	0.9130	0.7226	1.0453	1.4466	0.929	0.6913	1.8260	3.0241	3.185	0.8019
0.1060	0.14617	0.9184	0.7252	1.0531	1.4523	0.928	0.6886	1.8369	3.0588	3.218	0.8003
0.1070	0.14704	0.9239	0.7277	1.0610	1.4580	0.928	0.6859	1.8477	3.0938	3.251	0.7986
0.1080	0.14790	0.9293	0.7302	1.0689	1.4637	0.927	0.6832	1.8585	3.1291	3.285	0.7970
0.1090	0.14875	0.9346	0.7328	1.0768	1.4695	0.926	0.6805	1.8693	3.1648	3.319	0.7953
0.1100	0.14961	0.9400	0.7352	1.0847	1.4753	0.926	0.6778	1.8801	3.2007	3.353	0.7937
0.1110	0.15047	0.9454	0.7377	1.0927	1.4812	0.925	0.6751	1.8908	3.2370	3.388	0.7921
0.1120	0.15132	0.9508	0.7401	1.1007	1.4871	0.924	0.6725	1.9016	3.2736	3.423	0.7904
0.1130	0.15218	0.9562	0.7426	1.1087	1.4930	0.924	0.6698	1.9123	3.3105	3.458	0.7888
0.1140	0.15303	0.9615	0.7450	1.1167	1.4990	0.923	0.6671	1.9230	3.3478	3.494	0.7872
0.1150	0.15388	0.9669	0.7473	1.1247	1.5050	0.923	0.6645	1.9337	3.3854	3.530	0.7856
0.1160	0.15473	0.9722	0.7497	1.1328	1.5110	0.922	0.6618	1.9444	3.4233	3.566	0.7840
0.1170	0.15558	0.9776	0.7520	1.1409	1.5171	0.922	0.6592	1.9551	3.4616	3.603	0.7824
0.1180	0.15643	0.9829	0.7543	1.1490	1.5232	0.921	0.6565	1.9658	3.5003	3.640	0.7808
0.1190	0.15728	0.9882	0.7566	1.1571	1.5294	0.921	0.6539	1.9765	3.5393	3.678	0.7792

Tabel A-1. Lanjutan

$\frac{d}{L_0}$	$\frac{d}{L}$	$\frac{2\pi d}{L}$	$\tanh \frac{2\pi d}{L}$	$\sinh \frac{2\pi d}{L}$	$\cosh \frac{2\pi d}{L}$	K_s	K	$\frac{4\pi d}{L}$	$\sinh \frac{4\pi d}{L}$	$\cosh \frac{4\pi d}{L}$	n
0.1200	0.15813	0.9936	0.7589	1.1653	1.5355	0.920	0.6512	1.9871	3.5787	3.716	0.7776
0.1210	0.15898	0.9989	0.7611	1.1735	1.5418	0.920	0.6486	1.9978	3.6184	3.754	0.7761
0.1220	0.15982	1.0042	0.7633	1.1817	1.5480	0.920	0.6460	2.0084	3.6585	3.793	0.7745
0.1230	0.16067	1.0095	0.7656	1.1899	1.5543	0.919	0.6434	2.0190	3.6990	3.832	0.7729
0.1240	0.16151	1.0148	0.7677	1.1982	1.5607	0.919	0.6408	2.0296	3.7399	3.871	0.7713
0.1250	0.16236	1.0201	0.7699	1.2065	1.5670	0.918	0.6381	2.0402	3.7812	3.911	0.7698
0.1260	0.16320	1.0254	0.7721	1.2148	1.5734	0.918	0.6355	2.0508	3.8228	3.951	0.7682
0.1270	0.16404	1.0307	0.7742	1.2231	1.5799	0.918	0.6330	2.0614	3.8649	3.992	0.7667
0.1280	0.16488	1.0360	0.7763	1.2315	1.5864	0.917	0.6304	2.0720	3.9074	4.033	0.7651
0.1290	0.16573	1.0413	0.7784	1.2399	1.5929	0.917	0.6278	2.0826	3.9502	4.075	0.7636
0.1300	0.16657	1.0466	0.7805	1.2484	1.5995	0.917	0.6252	2.0931	3.9935	4.117	0.7621
0.1310	0.16741	1.0518	0.7825	1.2568	1.6061	0.917	0.6226	2.1037	4.0372	4.159	0.7605
0.1320	0.16825	1.0571	0.7846	1.2653	1.6128	0.916	0.6201	2.1143	4.0813	4.202	0.7590
0.1330	0.16909	1.0624	0.7866	1.2738	1.6195	0.916	0.6175	2.1248	4.1259	4.245	0.7575
0.1340	0.16993	1.0677	0.7886	1.2824	1.6262	0.916	0.6149	2.1353	4.1709	4.289	0.7560
0.1350	0.17076	1.0729	0.7906	1.2910	1.6330	0.916	0.6124	2.1459	4.2163	4.333	0.7545
0.1360	0.17160	1.0782	0.7925	1.2996	1.6398	0.915	0.6098	2.1564	4.2622	4.378	0.7530
0.1370	0.17244	1.0835	0.7945	1.3082	1.6467	0.915	0.6073	2.1669	4.3085	4.423	0.7515
0.1380	0.17328	1.0887	0.7964	1.3169	1.6536	0.915	0.6048	2.1775	4.3553	4.469	0.7500
0.1390	0.17411	1.0940	0.7983	1.3256	1.6605	0.915	0.6022	2.1880	4.4025	4.515	0.7485
0.1400	0.17495	1.0992	0.8002	1.3344	1.6675	0.915	0.5997	2.1985	4.4502	4.561	0.7470
0.1410	0.17579	1.1045	0.8021	1.3432	1.6745	0.914	0.5972	2.2090	4.4984	4.608	0.7455
0.1420	0.17662	1.1098	0.8040	1.3520	1.6816	0.914	0.5947	2.2195	4.5470	4.656	0.7441
0.1430	0.17746	1.1150	0.8058	1.3608	1.6887	0.914	0.5922	2.2300	4.5962	4.704	0.7426
0.1440	0.17829	1.1203	0.8077	1.3697	1.6959	0.914	0.5897	2.2405	4.6458	4.752	0.7411
0.1450	0.17913	1.1255	0.8095	1.3786	1.7031	0.914	0.5872	2.2510	4.6960	4.801	0.7397
0.1460	0.17996	1.1307	0.8113	1.3876	1.7104	0.914	0.5847	2.2615	4.7466	4.851	0.7382
0.1470	0.18080	1.1360	0.8131	1.3966	1.7177	0.914	0.5822	2.2720	4.7977	4.901	0.7368
0.1480	0.18163	1.1412	0.8148	1.4056	1.7250	0.914	0.5797	2.2825	4.8494	4.951	0.7353
0.1490	0.18247	1.1465	0.8166	1.4147	1.7324	0.913	0.5772	2.2930	4.9016	5.003	0.7339

Tabel A-1. Lanjutan

$\frac{d}{L_0}$	$\frac{d}{L}$	$\frac{2\pi d}{L}$	$\tanh \frac{2\pi d}{L}$	$\sinh \frac{2\pi d}{L}$	$\cosh \frac{2\pi d}{L}$	K_s	K	$\frac{4\pi d}{L}$	$\sinh \frac{4\pi d}{L}$	$\cosh \frac{4\pi d}{L}$	n
0.1500	0.18330	1.1517	0.8183	1.4238	1.7399	0.913	0.5748	2.3034	4.9543	5.054	0.7325
0.1510	0.18414	1.1570	0.8200	1.4329	1.7473	0.913	0.5723	2.3139	5.0076	5.106	0.7310
0.1520	0.18497	1.1622	0.8218	1.4421	1.7549	0.913	0.5698	2.3244	5.0614	5.159	0.7296
0.1530	0.18580	1.1674	0.8234	1.4513	1.7625	0.913	0.5674	2.3349	5.1157	5.213	0.7282
0.1540	0.18664	1.1727	0.8251	1.4605	1.7701	0.913	0.5649	2.3454	5.1706	5.266	0.7268
0.1550	0.18747	1.1779	0.8268	1.4698	1.7778	0.913	0.5625	2.3558	5.2260	5.321	0.7254
0.1560	0.18830	1.1832	0.8284	1.4792	1.7855	0.913	0.5601	2.3663	5.2821	5.376	0.7240
0.1570	0.18914	1.1884	0.8301	1.4885	1.7933	0.913	0.5576	2.3768	5.3387	5.432	0.7226
0.1580	0.18997	1.1936	0.8317	1.4980	1.8011	0.913	0.5552	2.3873	5.3959	5.488	0.7212
0.1590	0.19081	1.1989	0.8333	1.5074	1.8089	0.913	0.5528	2.3977	5.4537	5.545	0.7198
0.1600	0.19164	1.2041	0.8349	1.5169	1.8169	0.913	0.5504	2.4082	5.5120	5.602	0.7185
0.1610	0.19247	1.2093	0.8365	1.5264	1.8248	0.913	0.5480	2.4187	5.5710	5.660	0.7171
0.1620	0.19331	1.2146	0.8380	1.5360	1.8329	0.913	0.5456	2.4292	5.6306	5.719	0.7157
0.1630	0.19414	1.2198	0.8396	1.5456	1.8409	0.913	0.5432	2.4396	5.6908	5.778	0.7143
0.1640	0.19497	1.2251	0.8411	1.5553	1.8490	0.913	0.5408	2.4501	5.7517	5.838	0.7130
0.1650	0.19581	1.2303	0.8427	1.5650	1.8572	0.913	0.5384	2.4606	5.8132	5.899	0.7116
0.1660	0.19664	1.2355	0.8442	1.5748	1.8654	0.913	0.5361	2.4711	5.8753	5.960	0.7103
0.1670	0.19748	1.2408	0.8457	1.5846	1.8737	0.913	0.5337	2.4815	5.9381	6.022	0.7090
0.1680	0.19831	1.2460	0.8472	1.5944	1.8821	0.913	0.5313	2.4920	6.0015	6.084	0.7076
0.1690	0.19914	1.2513	0.8486	1.6043	1.8904	0.913	0.5290	2.5025	6.0656	6.147	0.7063
0.1700	0.19998	1.2565	0.8501	1.6142	1.8989	0.913	0.5266	2.5130	6.1304	6.211	0.7050
0.1710	0.20081	1.2617	0.8515	1.6242	1.9074	0.913	0.5243	2.5235	6.1959	6.276	0.7036
0.1720	0.20165	1.2670	0.8530	1.6342	1.9159	0.914	0.5219	2.5340	6.2620	6.341	0.7023
0.1730	0.20248	1.2722	0.8544	1.6443	1.9245	0.914	0.5196	2.5445	6.3289	6.407	0.7010
0.1740	0.20332	1.2775	0.8558	1.6544	1.9332	0.914	0.5173	2.5549	6.3965	6.474	0.6997
0.1750	0.20415	1.2827	0.8572	1.6646	1.9419	0.914	0.5150	2.5654	6.4647	6.542	0.6984
0.1760	0.20499	1.2880	0.8586	1.6748	1.9506	0.914	0.5127	2.5759	6.5338	6.610	0.6971
0.1770	0.20582	1.2932	0.8600	1.6851	1.9594	0.914	0.5103	2.5864	6.6035	6.679	0.6958
0.1780	0.20666	1.2985	0.8613	1.6954	1.9683	0.914	0.5080	2.5969	6.6740	6.749	0.6946
0.1790	0.20749	1.3037	0.8627	1.7057	1.9772	0.914	0.5058	2.6074	6.7453	6.819	0.6933

Tabel A-1. Lanjutan

$\frac{d}{L_0}$	$\frac{d}{L}$	$\frac{2\pi d}{L}$	$\tanh \frac{2\pi d}{L}$	$\sinh \frac{2\pi d}{L}$	$\cosh \frac{2\pi d}{L}$	K_s	K	$\frac{4\pi d}{L}$	$\sinh \frac{4\pi d}{L}$	$\cosh \frac{4\pi d}{L}$	n
0.1800	0.20833	1.3090	0.8640	1.7161	1.9862	0.914	0.5035	2.6179	6.8173	6.890	0.6920
0.1810	0.20917	1.3142	0.8653	1.7266	1.9953	0.915	0.5012	2.6285	6.8901	6.962	0.6907
0.1820	0.21000	1.3195	0.8667	1.7371	2.0044	0.915	0.4989	2.6390	6.9637	7.035	0.6895
0.1830	0.21084	1.3247	0.8680	1.7477	2.0135	0.915	0.4966	2.6495	7.0380	7.109	0.6882
0.1840	0.21168	1.3300	0.8693	1.7583	2.0228	0.915	0.4944	2.6600	7.1132	7.183	0.6870
0.1850	0.21251	1.3353	0.8705	1.7690	2.0320	0.915	0.4921	2.6705	7.1892	7.258	0.6857
0.1860	0.21335	1.3405	0.8718	1.7797	2.0414	0.915	0.4899	2.6811	7.2660	7.335	0.6845
0.1870	0.21419	1.3458	0.8731	1.7905	2.0508	0.916	0.4876	2.6916	7.3437	7.411	0.6833
0.1880	0.21503	1.3511	0.8743	1.8013	2.0602	0.916	0.4854	2.7021	7.4222	7.489	0.6820
0.1890	0.21587	1.3563	0.8755	1.8122	2.0698	0.916	0.4831	2.7127	7.5015	7.568	0.6808
0.1900	0.21671	1.3616	0.8768	1.8231	2.0793	0.916	0.4809	2.7232	7.5817	7.647	0.6796
0.1910	0.21755	1.3669	0.8780	1.8341	2.0890	0.916	0.4787	2.7338	7.6628	7.728	0.6784
0.1920	0.21838	1.3722	0.8792	1.8451	2.0987	0.916	0.4765	2.7443	7.7448	7.809	0.6772
0.1930	0.21922	1.3774	0.8804	1.8562	2.1085	0.917	0.4743	2.7549	7.8276	7.891	0.6760
0.1940	0.22007	1.3827	0.8816	1.8674	2.1183	0.917	0.4721	2.7654	7.9114	7.974	0.6748
0.1950	0.22091	1.3880	0.8827	1.8786	2.1282	0.917	0.4699	2.7760	7.9961	8.058	0.6736
0.1960	0.22175	1.3933	0.8839	1.8899	2.1381	0.917	0.4677	2.7866	8.0817	8.143	0.6724
0.1970	0.22259	1.3986	0.8850	1.9012	2.1482	0.917	0.4655	2.7971	8.1683	8.229	0.6712
0.1980	0.22343	1.4039	0.8862	1.9126	2.1583	0.918	0.4633	2.8077	8.2558	8.316	0.6700
0.1990	0.22427	1.4091	0.8873	1.9241	2.1684	0.918	0.4612	2.8183	8.3443	8.404	0.6689
0.2000	0.22512	1.4144	0.8884	1.9356	2.1786	0.918	0.4590	2.8289	8.4337	8.493	0.6677
0.2010	0.22596	1.4197	0.8895	1.9471	2.1889	0.918	0.4568	2.8395	8.5242	8.583	0.6666
0.2020	0.22680	1.4250	0.8906	1.9588	2.1993	0.919	0.4547	2.8501	8.6156	8.673	0.6654
0.2030	0.22765	1.4303	0.8917	1.9704	2.2097	0.919	0.4526	2.8607	8.7081	8.765	0.6643
0.2040	0.22849	1.4356	0.8928	1.9822	2.2202	0.919	0.4504	2.8713	8.8016	8.858	0.6631
0.2050	0.22933	1.4410	0.8939	1.9940	2.2307	0.919	0.4483	2.8819	8.8961	8.952	0.6620
0.2060	0.23018	1.4463	0.8950	2.0059	2.2413	0.919	0.4462	2.8925	8.9917	9.047	0.6608
0.2070	0.23103	1.4516	0.8960	2.0178	2.2520	0.920	0.4440	2.9032	9.0884	9.143	0.6597
0.2080	0.23187	1.4569	0.8970	2.0298	2.2628	0.920	0.4419	2.9138	9.1861	9.240	0.6586
0.2090	0.23272	1.4622	0.8981	2.0419	2.2736	0.920	0.4398	2.9244	9.2849	9.339	0.6575

Tabel A-1. Lanjutan

$\frac{d}{L_0}$	$\frac{d}{L}$	$\frac{2\pi d}{L}$	$\tanh \frac{2\pi d}{L}$	$\sinh \frac{2\pi d}{L}$	$\cosh \frac{2\pi d}{L}$	K_s	K	$\frac{4\pi d}{L}$	$\sinh \frac{4\pi d}{L}$	$\cosh \frac{4\pi d}{L}$	n
0.2100	0.23357	1.4675	0.8991	2.0540	2.2845	0.920	0.4377	2.9351	9.3848	9.438	0.6564
0.2110	0.23441	1.4729	0.9001	2.0662	2.2955	0.921	0.4356	2.9457	9.4859	9.538	0.6553
0.2120	0.23526	1.4782	0.9011	2.0785	2.3065	0.921	0.4336	2.9564	9.5881	9.640	0.6542
0.2130	0.23611	1.4835	0.9021	2.0908	2.3176	0.921	0.4315	2.9670	9.6914	9.743	0.6531
0.2140	0.23696	1.4889	0.9031	2.1032	2.3288	0.921	0.4294	2.9777	9.7959	9.847	0.6520
0.2150	0.23781	1.4942	0.9041	2.1156	2.3401	0.922	0.4273	2.9884	9.9015	9.952	0.6509
0.2160	0.23866	1.4995	0.9051	2.1282	2.3514	0.922	0.4253	2.9991	10.008	10.06	0.6498
0.2170	0.23951	1.5049	0.9060	2.1408	2.3628	0.922	0.4232	3.0097	10.116	10.17	0.6488
0.2180	0.24036	1.5102	0.9070	2.1534	2.3743	0.923	0.4212	3.0204	10.226	10.27	0.6477
0.2190	0.24121	1.5156	0.9079	2.1662	2.3858	0.923	0.4191	3.0311	10.336	10.38	0.6466
0.2200	0.24206	1.5209	0.9089	2.1790	2.3975	0.923	0.4171	3.0418	10.448	10.50	0.6456
0.2210	0.24291	1.5263	0.9098	2.1918	2.4092	0.923	0.4151	3.0526	10.561	10.61	0.6445
0.2220	0.24377	1.5316	0.9107	2.2048	2.4210	0.924	0.4131	3.0633	10.675	10.72	0.6435
0.2230	0.24462	1.5370	0.9116	2.2178	2.4328	0.924	0.4110	3.0740	10.791	10.84	0.6424
0.2240	0.24547	1.5424	0.9125	2.2309	2.4448	0.924	0.4090	3.0847	10.908	10.95	0.6414
0.2250	0.24633	1.5477	0.9134	2.2440	2.4568	0.925	0.4070	3.0955	11.026	11.07	0.6404
0.2260	0.24718	1.5531	0.9143	2.2573	2.4689	0.925	0.4050	3.1062	11.146	11.19	0.6393
0.2270	0.24804	1.5585	0.9152	2.2706	2.4810	0.925	0.4031	3.1170	11.267	11.31	0.6383
0.2280	0.24890	1.5639	0.9160	2.2840	2.4933	0.925	0.4011	3.1277	11.389	11.43	0.6373
0.2290	0.24975	1.5692	0.9169	2.2974	2.5056	0.926	0.3991	3.1385	11.513	11.56	0.6363
0.2300	0.25061	1.5746	0.9178	2.3109	2.5180	0.926	0.3971	3.1493	11.638	11.68	0.6353
0.2310	0.25147	1.5800	0.9186	2.3245	2.5305	0.926	0.3952	3.1600	11.765	11.81	0.6343
0.2320	0.25233	1.5854	0.9194	2.3382	2.5431	0.927	0.3932	3.1708	11.893	11.93	0.6333
0.2330	0.25319	1.5908	0.9203	2.3520	2.5557	0.927	0.3913	3.1816	12.022	12.06	0.6323
0.2340	0.25405	1.5962	0.9211	2.3658	2.5685	0.927	0.3893	3.1924	12.153	12.19	0.6313
0.2350	0.25491	1.6016	0.9219	2.3797	2.5813	0.928	0.3874	3.2032	12.286	12.33	0.6304
0.2360	0.25577	1.6070	0.9227	2.3937	2.5942	0.928	0.3855	3.2140	12.420	12.46	0.6294
0.2370	0.25663	1.6124	0.9235	2.4078	2.6072	0.928	0.3836	3.2249	12.555	12.60	0.6284
0.2380	0.25749	1.6179	0.9243	2.4220	2.6203	0.928	0.3816	3.2357	12.692	12.73	0.6275
0.2390	0.25835	1.6233	0.9251	2.4362	2.6334	0.929	0.3797	3.2465	12.831	12.87	0.6265

Tabel A-1. Lanjutan

$\frac{d}{L_0}$	$\frac{d}{L}$	$\frac{2\pi d}{L}$	$\tanh \frac{2\pi d}{L}$	$\sinh \frac{2\pi d}{L}$	$\cosh \frac{2\pi d}{L}$	K_s	K	$\frac{4\pi d}{L}$	$\sinh \frac{4\pi d}{L}$	$\cosh \frac{4\pi d}{L}$	n
0.2400	0.25921	1.6287	0.9259	2.4505	2.6467	0.929	0.3778	3.2574	12.971	13.01	0.6256
0.2410	0.26008	1.6341	0.9266	2.4649	2.6600	0.929	0.3759	3.2682	13.113	13.15	0.6246
0.2420	0.26094	1.6395	0.9274	2.4794	2.6735	0.930	0.3740	3.2791	13.257	13.29	0.6237
0.2430	0.26181	1.6450	0.9282	2.4939	2.6870	0.930	0.3722	3.2900	13.402	13.44	0.6227
0.2440	0.26267	1.6504	0.9289	2.5086	2.7006	0.930	0.3703	3.3008	13.549	13.59	0.6218
0.2450	0.26354	1.6559	0.9297	2.5233	2.7143	0.931	0.3684	3.3117	13.698	13.73	0.6209
0.2460	0.26440	1.6613	0.9304	2.5381	2.7280	0.931	0.3666	3.3226	13.848	13.88	0.6200
0.2470	0.26527	1.6668	0.9311	2.5530	2.7419	0.931	0.3647	3.3335	14.000	14.04	0.6191
0.2480	0.26614	1.6722	0.9318	2.5680	2.7559	0.932	0.3629	3.3444	14.154	14.19	0.6181
0.2490	0.26701	1.6777	0.9326	2.5831	2.7699	0.932	0.3610	3.3553	14.310	14.34	0.6172
0.2500	0.26788	1.6831	0.9333	2.5983	2.7841	0.932	0.3592	3.3662	14.467	14.50	0.6163
0.2510	0.26875	1.6886	0.9340	2.6135	2.7983	0.933	0.3574	3.3772	14.627	14.66	0.6154
0.2520	0.26962	1.6941	0.9347	2.6289	2.8126	0.933	0.3555	3.3881	14.788	14.82	0.6146
0.2530	0.27049	1.6995	0.9353	2.6443	2.8270	0.933	0.3537	3.3990	14.951	14.98	0.6137
0.2540	0.27136	1.7050	0.9360	2.6598	2.8416	0.934	0.3519	3.4100	15.116	15.15	0.6128
0.2550	0.27223	1.7105	0.9367	2.6754	2.8562	0.934	0.3501	3.4210	15.283	15.32	0.6119
0.2560	0.27310	1.7160	0.9374	2.6911	2.8709	0.934	0.3483	3.4319	15.452	15.48	0.6111
0.2570	0.27398	1.7214	0.9380	2.7069	2.8857	0.935	0.3465	3.4429	15.623	15.65	0.6102
0.2580	0.27485	1.7269	0.9387	2.7228	2.9006	0.935	0.3448	3.4539	15.795	15.83	0.6093
0.2590	0.27572	1.7324	0.9393	2.7388	2.9156	0.935	0.3430	3.4649	15.970	16.00	0.6085
0.2600	0.27660	1.7379	0.9400	2.7548	2.9307	0.936	0.3412	3.4759	16.147	16.18	0.6076
0.2610	0.27748	1.7434	0.9406	2.7710	2.9459	0.936	0.3395	3.4869	16.326	16.36	0.6068
0.2620	0.27835	1.7489	0.9413	2.7873	2.9612	0.936	0.3377	3.4979	16.507	16.54	0.6059
0.2630	0.27923	1.7544	0.9419	2.8036	2.9766	0.937	0.3360	3.5089	16.691	16.72	0.6051
0.2640	0.28011	1.7600	0.9425	2.8201	2.9921	0.937	0.3342	3.5199	16.876	16.91	0.6043
0.2650	0.28098	1.7655	0.9431	2.8366	3.0077	0.937	0.3325	3.5310	17.064	17.09	0.6035
0.2660	0.28186	1.7710	0.9437	2.8533	3.0234	0.938	0.3307	3.5420	17.254	17.28	0.6026
0.2670	0.28274	1.7765	0.9443	2.8700	3.0393	0.938	0.3290	3.5531	17.446	17.47	0.6018
0.2680	0.28362	1.7821	0.9449	2.8869	3.0552	0.938	0.3273	3.5641	17.640	17.67	0.6010
0.2690	0.28450	1.7876	0.9455	2.9038	3.0712	0.939	0.3256	3.5752	17.837	17.86	0.6002

Tabel A-1. Lanjutan

$\frac{d}{L_0}$	$\frac{d}{L}$	$\frac{2\pi d}{L}$	$\tanh \frac{2\pi d}{L}$	$\sinh \frac{2\pi d}{L}$	$\cosh \frac{2\pi d}{L}$	K_s	K	$\frac{4\pi d}{L}$	$\sinh \frac{4\pi d}{L}$	$\cosh \frac{4\pi d}{L}$	n
0.2700	0.28539	1.7931	0.9461	2.9209	3.0873	0.939	0.3239	3.5863	18.035	18.06	0.5994
0.2710	0.28627	1.7987	0.9467	2.9380	3.1036	0.939	0.3222	3.5973	18.237	18.26	0.5986
0.2720	0.28715	1.8042	0.9472	2.9553	3.1199	0.940	0.3205	3.6084	18.440	18.47	0.5978
0.2730	0.28803	1.8098	0.9478	2.9727	3.1364	0.940	0.3188	3.6195	18.647	18.67	0.5971
0.2740	0.28892	1.8153	0.9484	2.9901	3.1529	0.940	0.3172	3.6306	18.855	18.88	0.5963
0.2750	0.28980	1.8209	0.9489	3.0077	3.1696	0.941	0.3155	3.6418	19.066	19.09	0.5955
0.2760	0.29069	1.8264	0.9495	3.0254	3.1864	0.941	0.3138	3.6529	19.280	19.31	0.5947
0.2770	0.29157	1.8320	0.9500	3.0431	3.2032	0.941	0.3122	3.6640	19.496	19.52	0.5940
0.2780	0.29246	1.8376	0.9506	3.0610	3.2202	0.942	0.3105	3.6751	19.715	19.74	0.5932
0.2790	0.29335	1.8431	0.9511	3.0790	3.2373	0.942	0.3089	3.6863	19.936	19.96	0.5925
0.2800	0.29423	1.8487	0.9516	3.0971	3.2546	0.942	0.3073	3.6974	20.160	20.18	0.5917
0.2810	0.29512	1.8543	0.9521	3.1153	3.2719	0.943	0.3056	3.7086	20.386	20.41	0.5910
0.2820	0.29601	1.8599	0.9527	3.1337	3.2894	0.943	0.3040	3.7198	20.616	20.64	0.5902
0.2830	0.29690	1.8655	0.9532	3.1521	3.3069	0.943	0.3024	3.7310	20.848	20.87	0.5895
0.2840	0.29779	1.8711	0.9537	3.1706	3.3246	0.944	0.3008	3.7421	21.082	21.11	0.5888
0.2850	0.29868	1.8767	0.9542	3.1893	3.3424	0.944	0.2992	3.7533	21.320	21.34	0.5880
0.2860	0.29957	1.8823	0.9547	3.2081	3.3603	0.944	0.2976	3.7645	21.560	21.58	0.5873
0.2870	0.30046	1.8879	0.9552	3.2270	3.3784	0.945	0.2960	3.7757	21.804	21.83	0.5866
0.2880	0.30136	1.8935	0.9557	3.2460	3.3965	0.945	0.2944	3.7870	22.050	22.07	0.5859
0.2890	0.30225	1.8991	0.9562	3.2651	3.4148	0.945	0.2928	3.7982	22.299	22.32	0.5852
0.2900	0.30314	1.9047	0.9566	3.2843	3.4332	0.946	0.2913	3.8094	22.551	22.57	0.5845
0.2910	0.30404	1.9103	0.9571	3.3037	3.4517	0.946	0.2897	3.8207	22.806	22.83	0.5838
0.2920	0.30493	1.9160	0.9576	3.3231	3.4703	0.946	0.2882	3.8319	23.065	23.09	0.5831
0.2930	0.30583	1.9216	0.9580	3.3427	3.4891	0.947	0.2866	3.8432	23.326	23.35	0.5824
0.2940	0.30673	1.9272	0.9585	3.3624	3.5080	0.947	0.2851	3.8544	23.591	23.61	0.5817
0.2950	0.30762	1.9329	0.9590	3.3822	3.5270	0.947	0.2835	3.8657	23.858	23.88	0.5810
0.2960	0.30852	1.9385	0.9594	3.4022	3.5461	0.948	0.2820	3.8770	24.129	24.15	0.5803
0.2970	0.30942	1.9441	0.9599	3.4223	3.5654	0.948	0.2805	3.8883	24.403	24.42	0.5797
0.2980	0.31032	1.9498	0.9603	3.4425	3.5848	0.948	0.2790	3.8996	24.681	24.70	0.5790
0.2990	0.31122	1.9554	0.9607	3.4628	3.6043	0.949	0.2774	3.9109	24.962	24.98	0.5783

Tabel A-1. Lanjutan

$\frac{d}{L_0}$	$\frac{d}{L}$	$\frac{2\pi d}{L}$	$\tanh \frac{2\pi d}{L}$	$\sinh \frac{2\pi d}{L}$	$\cosh \frac{2\pi d}{L}$	K_s	K	$\frac{4\pi d}{L}$	$\sinh \frac{4\pi d}{L}$	$\cosh \frac{4\pi d}{L}$	n
0.3000	0.31212	1.9611	0.9612	3.4832	3.6239	0.949	0.2759	3.9222	25.246	25.27	0.5777
0.3010	0.31302	1.9668	0.9616	3.5038	3.6437	0.949	0.2744	3.9335	25.533	25.55	0.5770
0.3020	0.31392	1.9724	0.9620	3.5245	3.6636	0.950	0.2730	3.9448	25.824	25.84	0.5764
0.3030	0.31482	1.9781	0.9624	3.5453	3.6836	0.950	0.2715	3.9562	26.119	26.14	0.5757
0.3040	0.31573	1.9838	0.9629	3.5662	3.7038	0.950	0.2700	3.9675	26.417	26.44	0.5751
0.3050	0.31663	1.9894	0.9633	3.5873	3.7241	0.951	0.2685	3.9789	26.719	26.74	0.5745
0.3060	0.31753	1.9951	0.9637	3.6085	3.7445	0.951	0.2671	3.9902	27.024	27.04	0.5738
0.3070	0.31844	2.0008	0.9641	3.6299	3.7651	0.951	0.2656	4.0016	27.334	27.35	0.5732
0.3080	0.31934	2.0065	0.9645	3.6513	3.7858	0.952	0.2641	4.0130	27.646	27.66	0.5726
0.3090	0.32025	2.0122	0.9649	3.6729	3.8066	0.952	0.2627	4.0244	27.963	27.98	0.5720
0.3100	0.32115	2.0179	0.9653	3.6947	3.8276	0.952	0.2613	4.0357	28.284	28.30	0.5713
0.3110	0.32206	2.0236	0.9657	3.7165	3.8487	0.952	0.2598	4.0471	28.608	28.63	0.5707
0.3120	0.32297	2.0293	0.9660	3.7386	3.8700	0.953	0.2584	4.0585	28.936	28.95	0.5701
0.3130	0.32388	2.0350	0.9664	3.7607	3.8914	0.953	0.2570	4.0700	29.269	29.29	0.5695
0.3140	0.32479	2.0407	0.9668	3.7830	3.9129	0.953	0.2556	4.0814	29.605	29.62	0.5689
0.3150	0.32569	2.0464	0.9672	3.8054	3.9346	0.954	0.2542	4.0928	29.945	29.96	0.5683
0.3160	0.32660	2.0521	0.9675	3.8280	3.9564	0.954	0.2528	4.1042	30.290	30.31	0.5677
0.3170	0.32752	2.0578	0.9679	3.8507	3.9784	0.954	0.2514	4.1157	30.639	30.66	0.5672
0.3180	0.32843	2.0636	0.9683	3.8735	4.0005	0.955	0.2500	4.1271	30.992	31.01	0.5666
0.3190	0.32934	2.0693	0.9686	3.8965	4.0227	0.955	0.2486	4.1386	31.349	31.36	0.5660
0.3200	0.33025	2.0750	0.9690	3.9196	4.0451	0.955	0.2472	4.1500	31.711	31.73	0.5654
0.3210	0.33116	2.0808	0.9693	3.9429	4.0677	0.956	0.2458	4.1615	32.077	32.09	0.5649
0.3220	0.33208	2.0865	0.9697	3.9663	4.0904	0.956	0.2445	4.1730	32.447	32.46	0.5643
0.3230	0.33299	2.0922	0.9700	3.9898	4.1132	0.956	0.2431	4.1845	32.822	32.84	0.5637
0.3240	0.33391	2.0980	0.9703	4.0135	4.1362	0.957	0.2418	4.1960	33.202	33.22	0.5632
0.3250	0.33482	2.1037	0.9707	4.0374	4.1594	0.957	0.2404	4.2075	33.586	33.60	0.5626
0.3260	0.33574	2.1095	0.9710	4.0614	4.1827	0.957	0.2391	4.2190	33.975	33.99	0.5621
0.3270	0.33665	2.1153	0.9713	4.0855	4.2061	0.957	0.2377	4.2305	34.369	34.38	0.5615
0.3280	0.33757	2.1210	0.9717	4.1098	4.2297	0.958	0.2364	4.2420	34.767	34.78	0.5610
0.3290	0.33849	2.1268	0.9720	4.1343	4.2535	0.958	0.2351	4.2536	35.171	35.18	0.5605

Tabel A-1. Lanjutan

$\frac{d}{L_0}$	$\frac{d}{L}$	$\frac{2\pi d}{L}$	$\tanh \frac{2\pi d}{L}$	$\sinh \frac{2\pi d}{L}$	$\cosh \frac{2\pi d}{L}$	K_s	K	$\frac{4\pi d}{L}$	$\sinh \frac{4\pi d}{L}$	$\cosh \frac{4\pi d}{L}$	n
0.3300	0.33941	2.1325	0.9723	4.1589	4.2774	0.958	0.2338	4.2651	35.579	35.59	0.5599
0.3310	0.34032	2.1383	0.9726	4.1837	4.3015	0.959	0.2325	4.2766	35.992	36.01	0.5594
0.3320	0.34124	2.1441	0.9729	4.2086	4.3257	0.959	0.2312	4.2882	36.410	36.42	0.5589
0.3330	0.34216	2.1499	0.9732	4.2336	4.3501	0.959	0.2299	4.2998	36.834	36.85	0.5584
0.3340	0.34308	2.1557	0.9735	4.2589	4.3747	0.960	0.2286	4.3113	37.263	37.28	0.5579
0.3350	0.34400	2.1614	0.9738	4.2843	4.3994	0.960	0.2273	4.3229	37.696	37.71	0.5573
0.3360	0.34493	2.1672	0.9741	4.3098	4.4243	0.960	0.2260	4.3345	38.136	38.15	0.5568
0.3370	0.34585	2.1730	0.9744	4.3355	4.4493	0.960	0.2248	4.3461	38.580	38.59	0.5563
0.3380	0.34677	2.1788	0.9747	4.3614	4.4745	0.961	0.2235	4.3577	39.030	39.04	0.5558
0.3390	0.34769	2.1846	0.9750	4.3874	4.4999	0.961	0.2222	4.3693	39.486	39.50	0.5553
0.3400	0.34862	2.1904	0.9753	4.4136	4.5255	0.961	0.2210	4.3809	39.947	39.96	0.5548
0.3410	0.34954	2.1962	0.9756	4.4399	4.5512	0.962	0.2197	4.3925	40.414	40.43	0.5543
0.3420	0.35047	2.2020	0.9758	4.4665	4.5770	0.962	0.2185	4.4041	40.887	40.90	0.5539
0.3430	0.35139	2.2079	0.9761	4.4932	4.6031	0.962	0.2172	4.4157	41.365	41.38	0.5534
0.3440	0.35232	2.2137	0.9764	4.5200	4.6293	0.962	0.2160	4.4274	41.849	41.86	0.5529
0.3450	0.35324	2.2195	0.9767	4.5470	4.6557	0.963	0.2148	4.4390	42.339	42.35	0.5524
0.3460	0.35417	2.2253	0.9769	4.5742	4.6823	0.963	0.2136	4.4507	42.836	42.85	0.5520
0.3470	0.35510	2.2312	0.9772	4.6016	4.7090	0.963	0.2124	4.4623	43.338	43.35	0.5515
0.3480	0.35603	2.2370	0.9775	4.6291	4.7359	0.964	0.2112	4.4740	43.846	43.86	0.5510
0.3490	0.35696	2.2428	0.9777	4.6568	4.7630	0.964	0.2100	4.4856	44.361	44.37	0.5506
0.3500	0.35789	2.2487	0.9780	4.6847	4.7903	0.964	0.2088	4.4973	44.882	44.89	0.5501
0.3510	0.35881	2.2545	0.9782	4.7128	4.8177	0.964	0.2076	4.5090	45.410	45.42	0.5496
0.3520	0.35974	2.2603	0.9785	4.7410	4.8453	0.965	0.2064	4.5207	45.944	45.95	0.5492
0.3530	0.36068	2.2662	0.9787	4.7695	4.8732	0.965	0.2052	4.5324	46.485	46.50	0.5488
0.3540	0.36161	2.2720	0.9790	4.7980	4.9011	0.965	0.2040	4.5441	47.032	47.04	0.5483
0.3550	0.36254	2.2779	0.9792	4.8268	4.9293	0.965	0.2029	4.5558	47.586	47.60	0.5479
0.3560	0.36347	2.2838	0.9794	4.8558	4.9577	0.966	0.2017	4.5675	48.147	48.16	0.5474
0.3570	0.36440	2.2896	0.9797	4.8849	4.9862	0.966	0.2006	4.5792	48.715	48.72	0.5470
0.3580	0.36534	2.2955	0.9799	4.9142	5.0150	0.966	0.1994	4.5910	49.289	49.30	0.5466
0.3590	0.36627	2.3013	0.9801	4.9437	5.0439	0.966	0.1983	4.6027	49.871	49.88	0.5461

Tabel A-1. Lanjutan

$\frac{d}{L_0}$	$\frac{d}{L}$	$\frac{2\pi d}{L}$	$\tanh \frac{2\pi d}{L}$	$\sinh \frac{2\pi d}{L}$	$\cosh \frac{2\pi d}{L}$	K_s	K	$\frac{4\pi d}{L}$	$\sinh \frac{4\pi d}{L}$	$\cosh \frac{4\pi d}{L}$	n
0.3600	0.36720	2.3072	0.9804	4.9734	5.0730	0.967	0.1971	4.6144	50.460	50.47	0.5457
0.3610	0.36814	2.3131	0.9806	5.0033	5.1023	0.967	0.1960	4.6262	51.057	51.07	0.5453
0.3620	0.36908	2.3190	0.9808	5.0334	5.1318	0.967	0.1949	4.6379	51.661	51.67	0.5449
0.3630	0.37001	2.3248	0.9811	5.0637	5.1615	0.967	0.1937	4.6497	52.272	52.28	0.5445
0.3640	0.37095	2.3307	0.9813	5.0941	5.1913	0.968	0.1926	4.6615	52.890	52.90	0.5441
0.3650	0.37188	2.3366	0.9815	5.1248	5.2214	0.968	0.1915	4.6732	53.517	53.53	0.5437
0.3660	0.37282	2.3425	0.9817	5.1556	5.2517	0.968	0.1904	4.6850	54.151	54.16	0.5433
0.3670	0.37376	2.3484	0.9819	5.1866	5.2822	0.969	0.1893	4.6968	54.793	54.80	0.5429
0.3680	0.37470	2.3543	0.9821	5.2179	5.3128	0.969	0.1882	4.7086	55.443	55.45	0.5425
0.3690	0.37564	2.3602	0.9823	5.2493	5.3437	0.969	0.1871	4.7204	56.101	56.11	0.5421
0.3700	0.37658	2.3661	0.9825	5.2809	5.3748	0.969	0.1861	4.7322	56.767	56.78	0.5417
0.3710	0.37751	2.3720	0.9827	5.3127	5.4060	0.970	0.1850	4.7440	57.442	57.45	0.5413
0.3720	0.37846	2.3779	0.9829	5.3448	5.4375	0.970	0.1839	4.7558	58.124	58.13	0.5409
0.3730	0.37940	2.3838	0.9831	5.3770	5.4692	0.970	0.1828	4.7676	58.816	58.82	0.5405
0.3740	0.38034	2.3897	0.9833	5.4094	5.5011	0.970	0.1818	4.7795	59.515	59.52	0.5402
0.3750	0.38128	2.3956	0.9835	5.4421	5.5332	0.970	0.1807	4.7913	60.224	60.23	0.5398
0.3760	0.38222	2.4016	0.9837	5.4749	5.5655	0.971	0.1797	4.8031	60.941	60.95	0.5394
0.3770	0.38316	2.4075	0.9839	5.5080	5.5980	0.971	0.1786	4.8150	61.667	61.68	0.5390
0.3780	0.38411	2.4134	0.9841	5.5412	5.6307	0.971	0.1776	4.8268	62.403	62.41	0.5387
0.3790	0.38505	2.4193	0.9843	5.5747	5.6637	0.971	0.1766	4.8387	63.147	63.15	0.5383
0.3800	0.38599	2.4253	0.9845	5.6084	5.6969	0.972	0.1755	4.8505	63.900	63.91	0.5380
0.3810	0.38694	2.4312	0.9847	5.6423	5.7302	0.972	0.1745	4.8624	64.663	64.67	0.5376
0.3820	0.38788	2.4371	0.9848	5.6764	5.7638	0.972	0.1735	4.8743	65.436	65.44	0.5372
0.3830	0.38883	2.4431	0.9850	5.7107	5.7976	0.972	0.1725	4.8862	66.218	66.23	0.5369
0.3840	0.38977	2.4490	0.9852	5.7453	5.8317	0.973	0.1715	4.8980	67.009	67.02	0.5365
0.3850	0.39072	2.4550	0.9854	5.7801	5.8659	0.973	0.1705	4.9099	67.811	67.82	0.5362
0.3860	0.39167	2.4609	0.9855	5.8151	5.9004	0.973	0.1695	4.9218	68.622	68.63	0.5359
0.3870	0.39261	2.4669	0.9857	5.8503	5.9351	0.973	0.1685	4.9337	69.444	69.45	0.5355
0.3880	0.39356	2.4728	0.9859	5.8857	5.9700	0.973	0.1675	4.9456	70.276	70.28	0.5352
0.3890	0.39451	2.4788	0.9860	5.9214	6.0052	0.974	0.1665	4.9575	71.118	71.13	0.5349

Tabel A-1. Lanjutan

$\frac{d}{L_0}$	$\frac{d}{L}$	$\frac{2\pi d}{L}$	$\tanh \frac{2\pi d}{L}$	$\sinh \frac{2\pi d}{L}$	$\cosh \frac{2\pi d}{L}$	K_s	K	$\frac{4\pi d}{L}$	$\sinh \frac{4\pi d}{L}$	$\cosh \frac{4\pi d}{L}$	n
0.3900	0.39546	2.4847	0.9862	5.9572	6.0406	0.974	0.1655	4.9695	71.971	71.98	0.5345
0.3910	0.39641	2.4907	0.9864	5.9934	6.0762	0.974	0.1646	4.9814	72.834	72.84	0.5342
0.3920	0.39735	2.4967	0.9865	6.0297	6.1121	0.974	0.1636	4.9933	73.708	73.71	0.5339
0.3930	0.39830	2.5026	0.9867	6.0663	6.1481	0.975	0.1627	5.0052	74.593	74.60	0.5336
0.3940	0.39925	2.5086	0.9868	6.1031	6.1845	0.975	0.1617	5.0172	75.489	75.50	0.5332
0.3950	0.40020	2.5146	0.9870	6.1401	6.2210	0.975	0.1607	5.0291	76.396	76.40	0.5329
0.3960	0.40116	2.5205	0.9871	6.1774	6.2578	0.975	0.1598	5.0411	77.314	77.32	0.5326
0.3970	0.40211	2.5265	0.9873	6.2149	6.2948	0.975	0.1589	5.0530	78.244	78.25	0.5323
0.3980	0.40306	2.5325	0.9875	6.2527	6.3321	0.976	0.1579	5.0650	79.185	79.19	0.5320
0.3990	0.40401	2.5385	0.9876	6.2906	6.3696	0.976	0.1570	5.0769	80.138	80.14	0.5317
0.4000	0.40496	2.5445	0.9877	6.3289	6.4074	0.976	0.1561	5.0889	81.103	81.11	0.5314
0.4010	0.40592	2.5504	0.9879	6.3674	6.4454	0.976	0.1551	5.1009	82.080	82.09	0.5311
0.4020	0.40687	2.5564	0.9880	6.4061	6.4836	0.976	0.1542	5.1129	83.069	83.08	0.5308
0.4030	0.40782	2.5624	0.9882	6.4450	6.5221	0.977	0.1533	5.1248	84.071	84.08	0.5305
0.4040	0.40878	2.5684	0.9883	6.4842	6.5609	0.977	0.1524	5.1368	85.085	85.09	0.5302
0.4050	0.40973	2.5744	0.9885	6.5237	6.5999	0.977	0.1515	5.1488	86.112	86.12	0.5299
0.4060	0.41069	2.5804	0.9886	6.5634	6.6392	0.977	0.1506	5.1608	87.151	87.16	0.5296
0.4070	0.41164	2.5864	0.9887	6.6034	6.6787	0.977	0.1497	5.1728	88.204	88.21	0.5293
0.4080	0.41260	2.5924	0.9889	6.6436	6.7184	0.978	0.1488	5.1848	89.269	89.27	0.5290
0.4090	0.41355	2.5984	0.9890	6.6841	6.7585	0.978	0.1480	5.1968	90.348	90.35	0.5288
0.4100	0.41451	2.6044	0.9891	6.7248	6.7987	0.978	0.1471	5.2089	91.440	91.45	0.5285
0.4110	0.41547	2.6104	0.9893	6.7658	6.8393	0.978	0.1462	5.2209	92.546	92.55	0.5282
0.4120	0.41642	2.6165	0.9894	6.8070	6.8801	0.978	0.1453	5.2329	93.666	93.67	0.5279
0.4130	0.41738	2.6225	0.9895	6.8486	6.9212	0.979	0.1445	5.2449	94.800	94.81	0.5277
0.4140	0.41834	2.6285	0.9896	6.8903	6.9625	0.979	0.1436	5.2570	95.948	95.95	0.5274
0.4150	0.41930	2.6345	0.9898	6.9324	7.0041	0.979	0.1428	5.2690	97.110	97.12	0.5271
0.4160	0.42025	2.6405	0.9899	6.9747	7.0460	0.979	0.1419	5.2811	98.287	98.29	0.5269
0.4170	0.42121	2.6466	0.9900	7.0173	7.0882	0.979	0.1411	5.2931	99.479	99.48	0.5266
0.4180	0.42217	2.6526	0.9901	7.0601	7.1306	0.980	0.1402	5.3052	100.69	100.7	0.5263
0.4190	0.42313	2.6586	0.9902	7.1032	7.1733	0.980	0.1394	5.3172	101.91	101.9	0.5261

Tabel A-1. Lanjutan

$\frac{d}{L_0}$	$\frac{d}{L}$	$\frac{2\pi d}{L}$	$\tanh \frac{2\pi d}{L}$	$\sinh \frac{2\pi d}{L}$	$\cosh \frac{2\pi d}{L}$	K_s	K	$\frac{4\pi d}{L}$	$\sinh \frac{4\pi d}{L}$	$\cosh \frac{4\pi d}{L}$	n
0.4200	0.42409	2.6646	0.9904	7.1466	7.2163	0.980	0.1386	5.3293	103.14	103.1	0.5258
0.4210	0.42505	2.6707	0.9905	7.1903	7.2595	0.980	0.1378	5.3414	104.40	104.4	0.5256
0.4220	0.42601	2.6767	0.9906	7.2342	7.3030	0.980	0.1369	5.3534	105.66	105.7	0.5253
0.4230	0.42697	2.6828	0.9907	7.2785	7.3469	0.980	0.1361	5.3655	106.95	107.0	0.5251
0.4240	0.42794	2.6888	0.9908	7.3230	7.3909	0.981	0.1353	5.3776	108.25	108.3	0.5248
0.4250	0.42890	2.6948	0.9909	7.3678	7.4353	0.981	0.1345	5.3897	109.56	109.6	0.5246
0.4260	0.42986	2.7009	0.9910	7.4129	7.4800	0.981	0.1337	5.4018	110.90	110.9	0.5244
0.4270	0.43082	2.7069	0.9911	7.4582	7.5250	0.981	0.1329	5.4139	112.25	112.3	0.5241
0.4280	0.43178	2.7130	0.9912	7.5039	7.5702	0.981	0.1321	5.4260	113.61	113.6	0.5239
0.4290	0.43275	2.7190	0.9913	7.5498	7.6158	0.981	0.1313	5.4381	115.00	115.0	0.5236
0.4300	0.43371	2.7251	0.9914	7.5961	7.6616	0.982	0.1305	5.4502	116.40	116.4	0.5234
0.4310	0.43467	2.7311	0.9915	7.6426	7.7077	0.982	0.1297	5.4623	117.81	117.8	0.5232
0.4320	0.43564	2.7372	0.9916	7.6894	7.7542	0.982	0.1290	5.4744	119.25	119.3	0.5230
0.4330	0.43660	2.7433	0.9917	7.7365	7.8009	0.982	0.1282	5.4865	120.70	120.7	0.5227
0.4340	0.43757	2.7493	0.9918	7.7840	7.8479	0.982	0.1274	5.4986	122.18	122.2	0.5225
0.4350	0.43853	2.7554	0.9919	7.8317	7.8953	0.982	0.1267	5.5108	123.67	123.7	0.5223
0.4360	0.43950	2.7614	0.9920	7.8797	7.9429	0.983	0.1259	5.5229	125.18	125.2	0.5221
0.4370	0.44046	2.7675	0.9921	7.9280	7.9909	0.983	0.1251	5.5350	126.70	126.7	0.5218
0.4380	0.44143	2.7736	0.9922	7.9767	8.0391	0.983	0.1244	5.5472	128.25	128.3	0.5216
0.4390	0.44239	2.7796	0.9923	8.0256	8.0877	0.983	0.1236	5.5593	129.82	129.8	0.5214
0.4400	0.44336	2.7857	0.9924	8.0749	8.1366	0.983	0.1229	5.5714	131.40	131.4	0.5212
0.4410	0.44433	2.7918	0.9925	8.1245	8.1858	0.983	0.1222	5.5836	133.01	133.0	0.5210
0.4420	0.44530	2.7979	0.9926	8.1744	8.2353	0.983	0.1214	5.5957	134.64	134.6	0.5208
0.4430	0.44626	2.8039	0.9927	8.2246	8.2852	0.984	0.1207	5.6079	136.28	136.3	0.5206
0.4440	0.44723	2.8100	0.9928	8.2751	8.3353	0.984	0.1200	5.6201	137.95	138.0	0.5204
0.4450	0.44820	2.8161	0.9929	8.3260	8.3858	0.984	0.1192	5.6322	139.64	139.6	0.5202
0.4460	0.44917	2.8222	0.9930	8.3771	8.4366	0.984	0.1185	5.6444	141.35	141.4	0.5200
0.4470	0.45014	2.8283	0.9930	8.4286	8.4877	0.984	0.1178	5.6566	143.08	143.1	0.5198
0.4480	0.45110	2.8344	0.9931	8.4805	8.5392	0.984	0.1171	5.6687	144.83	144.8	0.5196
0.4490	0.45207	2.8405	0.9932	8.5326	8.5910	0.985	0.1164	5.6809	146.61	146.6	0.5194

Tabel A-1. Lanjutan

$\frac{d}{L_0}$	$\frac{d}{L}$	$\frac{2\pi d}{L}$	$\tanh \frac{2\pi d}{L}$	$\sinh \frac{2\pi d}{L}$	$\cosh \frac{2\pi d}{L}$	K_s	K	$\frac{4\pi d}{L}$	$\sinh \frac{4\pi d}{L}$	$\cosh \frac{4\pi d}{L}$	n
0.4500	0.45304	2.8465	0.9933	8.5851	8.6431	0.985	0.1157	5.6931	148.40	148.4	0.5192
0.4510	0.45401	2.8526	0.9934	8.6379	8.6956	0.985	0.1150	5.7053	150.22	150.2	0.5190
0.4520	0.45498	2.8587	0.9934	8.6911	8.7484	0.985	0.1143	5.7175	152.07	152.1	0.5188
0.4530	0.45595	2.8648	0.9935	8.7446	8.8016	0.985	0.1136	5.7297	153.93	153.9	0.5186
0.4540	0.45692	2.8709	0.9936	8.7984	8.8551	0.985	0.1129	5.7419	155.82	155.8	0.5184
0.4550	0.45789	2.8770	0.9937	8.8526	8.9089	0.985	0.1122	5.7541	157.73	157.7	0.5182
0.4560	0.45886	2.8831	0.9938	8.9071	8.9631	0.985	0.1116	5.7663	159.67	159.7	0.5181
0.4570	0.45984	2.8892	0.9938	8.9620	9.0176	0.986	0.1109	5.7785	161.63	161.6	0.5179
0.4580	0.46081	2.8953	0.9939	9.0172	9.0725	0.986	0.1102	5.7907	163.62	163.6	0.5177
0.4590	0.46178	2.9014	0.9940	9.0728	9.1277	0.986	0.1096	5.8029	165.63	165.6	0.5175
0.4600	0.46275	2.9076	0.9941	9.1287	9.1833	0.986	0.1089	5.8151	167.66	167.7	0.5173
0.4610	0.46372	2.9137	0.9941	9.1850	9.2392	0.986	0.1082	5.8273	169.72	169.7	0.5172
0.4620	0.46470	2.9198	0.9942	9.2416	9.2955	0.986	0.1076	5.8396	171.81	171.8	0.5170
0.4630	0.46567	2.9259	0.9943	9.2986	9.3522	0.986	0.1069	5.8518	173.92	173.9	0.5168
0.4640	0.46664	2.9320	0.9943	9.3560	9.4092	0.987	0.1063	5.8640	176.06	176.1	0.5167
0.4650	0.46762	2.9381	0.9944	9.4137	9.4666	0.987	0.1056	5.8762	178.23	178.2	0.5165
0.4660	0.46859	2.9442	0.9945	9.4718	9.5244	0.987	0.1050	5.8885	180.43	180.4	0.5163
0.4670	0.46956	2.9504	0.9945	9.5302	9.5825	0.987	0.1044	5.9007	182.65	182.7	0.5162
0.4680	0.47054	2.9565	0.9946	9.5891	9.6411	0.987	0.1037	5.9130	184.90	184.9	0.5160
0.4690	0.47151	2.9626	0.9947	9.6483	9.6999	0.987	0.1031	5.9252	187.18	187.2	0.5158
0.4700	0.47249	2.9687	0.9947	9.7078	9.7592	0.987	0.1025	5.9374	189.48	189.5	0.5157
0.4710	0.47346	2.9748	0.9948	9.7678	9.8189	0.987	0.1018	5.9497	191.82	191.8	0.5155
0.4720	0.47444	2.9810	0.9949	9.8281	9.8789	0.988	0.1012	5.9620	194.18	194.2	0.5154
0.4730	0.47541	2.9871	0.9949	9.8889	9.9393	0.988	0.1006	5.9742	196.58	196.6	0.5152
0.4740	0.47639	2.9932	0.9950	9.9500	10.000	0.988	0.1000	5.9865	199.00	199.0	0.5150
0.4750	0.47736	2.9994	0.9950	10.011	10.061	0.988	0.0994	5.9987	201.46	201.5	0.5149
0.4760	0.47834	3.0055	0.9951	10.073	10.123	0.988	0.0988	6.0110	203.94	203.9	0.5147
0.4770	0.47932	3.0116	0.9952	10.136	10.185	0.988	0.0982	6.0233	206.46	206.5	0.5146
0.4780	0.48029	3.0178	0.9952	10.198	10.247	0.988	0.0976	6.0355	209.01	209.0	0.5144
0.4790	0.48127	3.0239	0.9953	10.261	10.310	0.988	0.0970	6.0478	211.59	211.6	0.5143

Tabel A-1. Lanjutan

$\frac{d}{L_0}$	$\frac{d}{L}$	$\frac{2\pi d}{L}$	$\tanh \frac{2\pi d}{L}$	$\sinh \frac{2\pi d}{L}$	$\cosh \frac{2\pi d}{L}$	K_s	K	$\frac{4\pi d}{L}$	$\sinh \frac{4\pi d}{L}$	$\cosh \frac{4\pi d}{L}$	n
0.4800	0.48225	3.0300	0.9953	10.325	10.373	0.988	0.0964	6.0601	214.20	214.2	0.5141
0.4810	0.48322	3.0362	0.9954	10.389	10.437	0.989	0.0958	6.0724	216.85	216.9	0.5140
0.4820	0.48420	3.0423	0.9955	10.453	10.501	0.989	0.0952	6.0846	219.53	219.5	0.5139
0.4830	0.48518	3.0485	0.9955	10.518	10.565	0.989	0.0947	6.0969	222.24	222.2	0.5137
0.4840	0.48616	3.0546	0.9956	10.583	10.630	0.989	0.0941	6.1092	224.99	225.0	0.5136
0.4850	0.48713	3.0608	0.9956	10.648	10.695	0.989	0.0935	6.1215	227.77	227.8	0.5134
0.4860	0.48811	3.0669	0.9957	10.714	10.761	0.989	0.0929	6.1338	230.59	230.6	0.5133
0.4870	0.48909	3.0730	0.9957	10.781	10.827	0.989	0.0924	6.1461	233.44	233.4	0.5132
0.4880	0.49007	3.0792	0.9958	10.847	10.893	0.989	0.0918	6.1584	236.33	236.3	0.5130
0.4890	0.49105	3.0853	0.9958	10.915	10.960	0.989	0.0912	6.1707	239.26	239.3	0.5129
0.4900	0.49203	3.0915	0.9959	10.982	11.028	0.990	0.0907	6.1830	242.22	242.2	0.5128
0.4910	0.49301	3.0977	0.9959	11.050	11.096	0.990	0.0901	6.1953	245.22	245.2	0.5126
0.4920	0.49399	3.1038	0.9960	11.119	11.164	0.990	0.0896	6.2076	248.26	248.3	0.5125
0.4930	0.49497	3.1100	0.9960	11.188	11.232	0.990	0.0890	6.2199	251.33	251.3	0.5124
0.4940	0.49595	3.1161	0.9961	11.257	11.301	0.990	0.0885	6.2322	254.44	254.4	0.5122
0.4950	0.49693	3.1223	0.9961	11.327	11.371	0.990	0.0879	6.2445	257.60	257.6	0.5121
0.4960	0.49791	3.1284	0.9962	11.397	11.441	0.990	0.0874	6.2569	260.79	260.8	0.5120
0.4970	0.49889	3.1346	0.9962	11.468	11.511	0.990	0.0869	6.2692	264.02	264.0	0.5119
0.4980	0.49987	3.1408	0.9963	11.539	11.582	0.990	0.0863	6.2815	267.30	267.3	0.5118
0.4990	0.50085	3.1469	0.9963	11.611	11.654	0.990	0.0858	6.2938	270.61	270.6	0.5116
0.5000	0.50183	3.1531	0.9964	11.683	11.725	0.990	0.0853	6.3062	273.97	274.0	0.5115
0.5010	0.50281	3.1592	0.9964	11.755	11.798	0.991	0.0848	6.3185	277.37	277.4	0.5114
0.5020	0.50379	3.1654	0.9964	11.828	11.870	0.991	0.0842	6.3308	280.81	280.8	0.5113
0.5030	0.50477	3.1716	0.9965	11.902	11.944	0.991	0.0837	6.3432	284.29	284.3	0.5112
0.5040	0.50575	3.1777	0.9965	11.975	12.017	0.991	0.0832	6.3555	287.82	287.8	0.5110
0.5050	0.50674	3.1839	0.9966	12.050	12.091	0.991	0.0827	6.3678	291.40	291.4	0.5109
0.5060	0.50772	3.1901	0.9966	12.125	12.166	0.991	0.0822	6.3802	295.01	295.0	0.5108
0.5070	0.50870	3.1963	0.9967	12.200	12.241	0.991	0.0817	6.3925	298.68	298.7	0.5107
0.5080	0.50968	3.2024	0.9967	12.276	12.316	0.991	0.0812	6.4049	302.39	302.4	0.5106
0.5090	0.51067	3.2086	0.9967	12.352	12.392	0.991	0.0807	6.4172	306.15	306.1	0.5105

Tabel A-1. Lanjutan

$\frac{d}{L_0}$	$\frac{d}{L}$	$\frac{2\pi d}{L}$	$\tanh \frac{2\pi d}{L}$	$\sinh \frac{2\pi d}{L}$	$\cosh \frac{2\pi d}{L}$	K_s	K	$\frac{4\pi d}{L}$	$\sinh \frac{4\pi d}{L}$	$\cosh \frac{4\pi d}{L}$	n
0.5100	0.51165	3.2148	0.9968	12.429	12.469	0.991	0.0802	6.4296	309.95	310.0	0.5104
0.5110	0.51263	3.2210	0.9968	12.506	12.546	0.991	0.0797	6.4419	313.80	313.8	0.5103
0.5120	0.51361	3.2271	0.9969	12.584	12.623	0.992	0.0792	6.4543	317.70	317.7	0.5102
0.5130	0.51460	3.2333	0.9969	12.662	12.701	0.992	0.0787	6.4666	321.65	321.7	0.5101
0.5140	0.51558	3.2395	0.9969	12.741	12.780	0.992	0.0782	6.4790	325.65	325.7	0.5099
0.5150	0.51656	3.2457	0.9970	12.820	12.859	0.992	0.0778	6.4913	329.70	329.7	0.5098
0.5160	0.51755	3.2519	0.9970	12.900	12.938	0.992	0.0773	6.5037	333.80	333.8	0.5097
0.5170	0.51853	3.2580	0.9970	12.980	13.018	0.992	0.0768	6.5161	337.96	338.0	0.5096
0.5180	0.51952	3.2642	0.9971	13.061	13.099	0.992	0.0763	6.5284	342.16	342.2	0.5095
0.5190	0.52050	3.2704	0.9971	13.142	13.180	0.992	0.0759	6.5408	346.42	346.4	0.5094
0.5200	0.52148	3.2766	0.9972	13.224	13.261	0.992	0.0754	6.5532	350.73	350.7	0.5093
0.5210	0.52247	3.2828	0.9972	13.306	13.344	0.992	0.0749	6.5655	355.10	355.1	0.5092
0.5220	0.52345	3.2890	0.9972	13.389	13.426	0.992	0.0745	6.5779	359.52	359.5	0.5091
0.5230	0.52444	3.2951	0.9973	13.472	13.509	0.992	0.0740	6.5903	364.00	364.0	0.5091
0.5240	0.52542	3.3013	0.9973	13.556	13.593	0.993	0.0736	6.6027	368.53	368.5	0.5090
0.5250	0.52641	3.3075	0.9973	13.640	13.677	0.993	0.0731	6.6150	373.12	373.1	0.5089
0.5260	0.52739	3.3137	0.9974	13.725	13.762	0.993	0.0727	6.6274	377.77	377.8	0.5088
0.5270	0.52838	3.3199	0.9974	13.811	13.847	0.993	0.0722	6.6398	382.48	382.5	0.5087
0.5280	0.52937	3.3261	0.9974	13.897	13.933	0.993	0.0718	6.6522	387.24	387.2	0.5086
0.5290	0.53035	3.3323	0.9975	13.983	14.019	0.993	0.0713	6.6646	392.07	392.1	0.5085
0.5300	0.53134	3.3385	0.9975	14.070	14.106	0.993	0.0709	6.6770	396.96	397.0	0.5084
0.5310	0.53232	3.3447	0.9975	14.158	14.193	0.993	0.0705	6.6894	401.91	401.9	0.5083
0.5320	0.53331	3.3509	0.9975	14.246	14.281	0.993	0.0700	6.7018	406.92	406.9	0.5082
0.5330	0.53430	3.3571	0.9976	14.335	14.370	0.993	0.0696	6.7142	411.99	412.0	0.5081
0.5340	0.53528	3.3633	0.9976	14.424	14.459	0.993	0.0692	6.7265	417.13	417.1	0.5081
0.5350	0.53627	3.3695	0.9976	14.514	14.549	0.993	0.0687	6.7389	422.33	422.3	0.5080
0.5360	0.53725	3.3757	0.9977	14.605	14.639	0.993	0.0683	6.7513	427.60	427.6	0.5079
0.5370	0.53824	3.3819	0.9977	14.696	14.730	0.993	0.0679	6.7637	432.94	432.9	0.5078
0.5380	0.53923	3.3881	0.9977	14.788	14.821	0.993	0.0675	6.7761	438.34	438.3	0.5077
0.5390	0.54022	3.3943	0.9977	14.880	14.913	0.994	0.0671	6.7886	443.81	443.8	0.5076

Tabel A-1. Lanjutan

$\frac{d}{L_0}$	$\frac{d}{L}$	$\frac{2\pi d}{L}$	$\tanh \frac{2\pi d}{L}$	$\sinh \frac{2\pi d}{L}$	$\cosh \frac{2\pi d}{L}$	K_s	K	$\frac{4\pi d}{L}$	$\sinh \frac{4\pi d}{L}$	$\cosh \frac{4\pi d}{L}$	n
0.5400	0.54120	3.4005	0.9978	14.973	15.006	0.994	0.0666	6.8010	449.35	449.4	0.5076
0.5410	0.54219	3.4067	0.9978	15.066	15.099	0.994	0.0662	6.8134	454.96	455.0	0.5075
0.5420	0.54318	3.4129	0.9978	15.160	15.193	0.994	0.0658	6.8258	460.64	460.6	0.5074
0.5430	0.54417	3.4191	0.9979	15.254	15.287	0.994	0.0654	6.8382	466.40	466.4	0.5073
0.5440	0.54515	3.4253	0.9979	15.350	15.382	0.994	0.0650	6.8506	472.22	472.2	0.5073
0.5450	0.54614	3.4315	0.9979	15.445	15.478	0.994	0.0646	6.8630	478.12	478.1	0.5072
0.5460	0.54713	3.4377	0.9979	15.542	15.574	0.994	0.0642	6.8754	484.09	484.1	0.5071
0.5470	0.54812	3.4439	0.9980	15.639	15.671	0.994	0.0638	6.8878	490.14	490.1	0.5070
0.5480	0.54911	3.4501	0.9980	15.736	15.768	0.994	0.0634	6.9003	496.27	496.3	0.5070
0.5490	0.55009	3.4563	0.9980	15.835	15.866	0.994	0.0630	6.9127	502.47	502.5	0.5069
0.5500	0.55108	3.4626	0.9980	15.933	15.965	0.994	0.0626	6.9251	508.75	508.7	0.5068
0.5510	0.55207	3.4688	0.9981	16.033	16.064	0.994	0.0623	6.9375	515.11	515.1	0.5067
0.5520	0.55306	3.4750	0.9981	16.133	16.164	0.994	0.0619	6.9499	521.55	521.5	0.5067
0.5530	0.55405	3.4812	0.9981	16.234	16.265	0.994	0.0615	6.9624	528.07	528.1	0.5066
0.5540	0.55504	3.4874	0.9981	16.335	16.366	0.994	0.0611	6.9748	534.67	534.7	0.5065
0.5550	0.55603	3.4936	0.9982	16.437	16.468	0.995	0.0607	6.9872	541.36	541.4	0.5065
0.5560	0.55702	3.4998	0.9982	16.540	16.570	0.995	0.0603	6.9997	548.13	548.1	0.5064
0.5570	0.55800	3.5060	0.9982	16.643	16.673	0.995	0.0600	7.0121	554.99	555.0	0.5063
0.5580	0.55899	3.5123	0.9982	16.747	16.777	0.995	0.0596	7.0245	561.93	561.9	0.5063
0.5590	0.55998	3.5185	0.9982	16.852	16.881	0.995	0.0592	7.0370	568.96	569.0	0.5062
0.5600	0.56097	3.5247	0.9983	16.957	16.986	0.995	0.0589	7.0494	576.08	576.1	0.5061
0.5610	0.56196	3.5309	0.9983	17.063	17.092	0.995	0.0585	7.0618	583.29	583.3	0.5061
0.5620	0.56295	3.5371	0.9983	17.170	17.199	0.995	0.0581	7.0743	590.59	590.6	0.5060
0.5630	0.56394	3.5434	0.9983	17.277	17.306	0.995	0.0578	7.0867	597.98	598.0	0.5059
0.5640	0.56493	3.5496	0.9983	17.385	17.414	0.995	0.0574	7.0991	605.47	605.5	0.5059
0.5650	0.56592	3.5558	0.9984	17.494	17.522	0.995	0.0571	7.1116	613.05	613.0	0.5058
0.5660	0.56691	3.5620	0.9984	17.603	17.631	0.995	0.0567	7.1240	620.72	620.7	0.5057
0.5670	0.56790	3.5682	0.9984	17.713	17.741	0.995	0.0564	7.1365	628.50	628.5	0.5057
0.5680	0.56889	3.5745	0.9984	17.824	17.852	0.995	0.0560	7.1489	636.37	636.4	0.5056
0.5690	0.56988	3.5807	0.9984	17.935	17.963	0.995	0.0557	7.1614	644.34	644.3	0.5056

Tabel A-1. Lanjutan

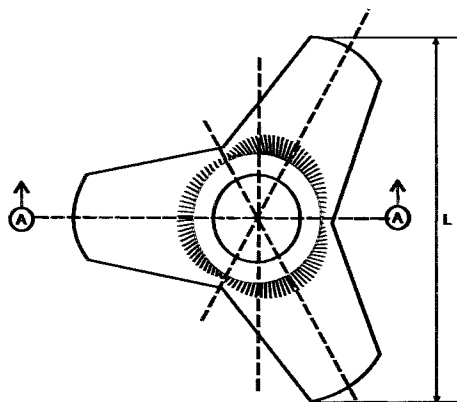
$\frac{d}{L_0}$	$\frac{d}{L}$	$\frac{2\pi d}{L}$	$\tanh \frac{2\pi d}{L}$	$\sinh \frac{2\pi d}{L}$	$\cosh \frac{2\pi d}{L}$	K_s	K	$\frac{4\pi d}{L}$	$\sinh \frac{4\pi d}{L}$	$\cosh \frac{4\pi d}{L}$	n
0.5700	0.57087	3.5869	0.9985	18.047	18.075	0.995	0.0553	7.1738	652.41	652.4	0.5055
0.5710	0.57187	3.5931	0.9985	18.160	18.188	0.995	0.0550	7.1863	660.58	660.6	0.5054
0.5720	0.57286	3.5994	0.9985	18.274	18.301	0.995	0.0546	7.1987	668.86	668.9	0.5054
0.5730	0.57385	3.6056	0.9985	18.388	18.415	0.995	0.0543	7.2112	677.24	677.2	0.5053
0.5740	0.57484	3.6118	0.9985	18.503	18.530	0.995	0.0540	7.2236	685.72	685.7	0.5053
0.5750	0.57583	3.6180	0.9986	18.619	18.646	0.996	0.0536	7.2361	694.32	694.3	0.5052
0.5760	0.57682	3.6243	0.9986	18.735	18.762	0.996	0.0533	7.2485	703.02	703.0	0.5052
0.5770	0.57781	3.6305	0.9986	18.852	18.879	0.996	0.0530	7.2610	711.83	711.8	0.5051
0.5780	0.57880	3.6367	0.9986	18.970	18.997	0.996	0.0526	7.2734	720.75	720.8	0.5050
0.5790	0.57979	3.6430	0.9986	19.089	19.115	0.996	0.0523	7.2859	729.79	729.8	0.5050
0.5800	0.58079	3.6492	0.9986	19.209	19.235	0.996	0.0520	7.2984	738.94	738.9	0.5049
0.5810	0.58178	3.6554	0.9987	19.329	19.355	0.996	0.0517	7.3108	748.21	748.2	0.5049
0.5820	0.58277	3.6616	0.9987	19.450	19.475	0.996	0.0513	7.3233	757.59	757.6	0.5048
0.5830	0.58376	3.6679	0.9987	19.572	19.597	0.996	0.0510	7.3358	767.09	767.1	0.5048
0.5840	0.58475	3.6741	0.9987	19.694	19.719	0.996	0.0507	7.3482	776.71	776.7	0.5047
0.5850	0.58574	3.6803	0.9987	19.817	19.843	0.996	0.0504	7.3607	786.45	786.5	0.5047
0.5860	0.58674	3.6866	0.9987	19.941	19.966	0.996	0.0501	7.3731	796.32	796.3	0.5046
0.5870	0.58773	3.6928	0.9988	20.066	20.091	0.996	0.0498	7.3856	806.31	806.3	0.5046
0.5880	0.58872	3.6990	0.9988	20.192	20.217	0.996	0.0495	7.3981	816.42	816.4	0.5045
0.5890	0.58971	3.7053	0.9988	20.318	20.343	0.996	0.0492	7.4106	826.67	826.7	0.5045
0.5900	0.59071	3.7115	0.9988	20.446	20.470	0.996	0.0489	7.4230	837.04	837.0	0.5044
0.5910	0.59170	3.7177	0.9988	20.574	20.598	0.996	0.0485	7.4355	847.55	847.5	0.5044
0.5920	0.59269	3.7240	0.9988	20.702	20.727	0.996	0.0482	7.4480	858.18	858.2	0.5043
0.5930	0.59368	3.7302	0.9988	20.832	20.856	0.996	0.0479	7.4604	868.95	869.0	0.5043
0.5940	0.59468	3.7365	0.9989	20.963	20.986	0.996	0.0476	7.4729	879.86	879.9	0.5042
0.5950	0.59567	3.7427	0.9989	21.094	21.118	0.996	0.0474	7.4854	890.91	890.9	0.5042
0.5960	0.59666	3.7489	0.9989	21.226	21.250	0.996	0.0471	7.4979	902.09	902.1	0.5042
0.5970	0.59765	3.7552	0.9989	21.359	21.382	0.996	0.0468	7.5103	913.42	913.4	0.5041
0.5980	0.59865	3.7614	0.9989	21.493	21.516	0.996	0.0465	7.5228	924.89	924.9	0.5041
0.5990	0.59964	3.7676	0.9989	21.628	21.651	0.997	0.0462	7.5353	936.50	936.5	0.5040

Tabel A-1. Lanjutan

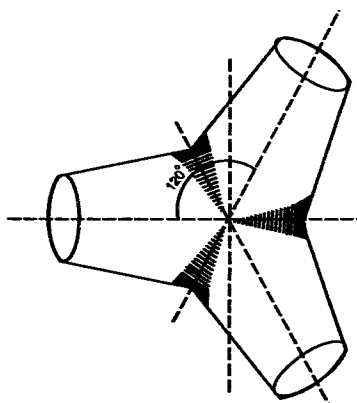
$\frac{d}{L_0}$	$\frac{d}{L}$	$\frac{2\pi d}{L}$	$\tanh \frac{2\pi d}{L}$	$\sinh \frac{2\pi d}{L}$	$\cosh \frac{2\pi d}{L}$	K_s	K	$\frac{4\pi d}{L}$	$\sinh \frac{4\pi d}{L}$	$\cosh \frac{4\pi d}{L}$	n
0.6000	0.60063	3.7739	0.9989	21.763	21.786	0.997	0.0459	7.5478	948.26	948.3	0.5040
0.6100	0.61057	3.8363	0.9991	23.166	23.188	0.997	0.0431	7.6726	1074.4	1074	0.5036
0.6200	0.62051	3.8988	0.9992	24.661	24.681	0.997	0.0405	7.7976	1217.3	1217	0.5032
0.6300	0.63046	3.9613	0.9993	26.253	26.272	0.998	0.0381	7.9226	1379.4	1379	0.5029
0.6400	0.64041	4.0238	0.9994	27.948	27.966	0.998	0.0358	8.0476	1563.2	1563	0.5026
0.6500	0.65037	4.0864	0.9994	29.754	29.770	0.998	0.0336	8.1728	1771.5	1772	0.5023
0.6600	0.66033	4.1490	0.9995	31.676	31.692	0.998	0.0316	8.2979	2007.8	2008	0.5021
0.6700	0.67029	4.2116	0.9996	33.724	33.739	0.998	0.0296	8.4232	2275.7	2276	0.5019
0.6800	0.68026	4.2742	0.9996	35.905	35.919	0.999	0.0278	8.5484	2579.4	2579	0.5017
0.6900	0.69024	4.3369	0.9997	38.228	38.241	0.999	0.0262	8.6738	2923.7	2924	0.5015
0.7000	0.70021	4.3996	0.9997	40.701	40.714	0.999	0.0246	8.7991	3314.2	3314	0.5013
0.7100	0.71019	4.4622	0.9997	43.335	43.347	0.999	0.0231	8.9245	3756.9	3757	0.5012
0.7200	0.72017	4.5250	0.9998	46.141	46.151	0.999	0.0217	9.0499	4258.9	4259	0.5011
0.7300	0.73015	4.5877	0.9998	49.128	49.138	0.999	0.0204	9.1754	4828.1	4828	0.5010
0.7400	0.74014	4.6504	0.9998	52.309	52.319	0.999	0.0191	9.3008	5473.5	5473	0.5008
0.7500	0.75012	4.7131	0.9998	55.697	55.706	0.999	0.0180	9.4263	6205.2	6205	0.5008
0.7600	0.76011	4.7759	0.9999	59.304	59.313	0.999	0.0169	9.5518	7035.0	7035	0.5007
0.7700	0.77010	4.8387	0.9999	63.146	63.154	0.999	0.0158	9.6773	7975.8	7976	0.5006
0.7800	0.78009	4.9014	0.9999	67.237	67.244	1.000	0.0149	9.8029	9042.6	9043	0.5005
0.7900	0.79008	4.9642	0.9999	71.594	71.601	1.000	0.0140	9.9284	10252	10252	0.5005
0.8000	0.80007	5.0270	0.9999	76.233	76.239	1.000	0.0131	10.054	11624	11624	0.5004
0.8100	0.81006	5.0898	0.9999	81.173	81.179	1.000	0.0123	10.180	13179	13179	0.5004
0.8200	0.82005	5.1526	0.9999	86.434	86.439	1.000	0.0116	10.305	14943	14943	0.5003
0.8300	0.83005	5.2154	0.9999	92.036	92.041	1.000	0.0109	10.431	16942	16942	0.5003
0.8400	0.84004	5.2782	0.9999	98.001	98.006	1.000	0.0102	10.556	19209	19209	0.5003
0.8500	0.85004	5.3410	1.0000	104.35	104.36	1.000	0.0096	10.682	21780	21780	0.5002
0.8600	0.86003	5.4038	1.0000	111.12	111.12	1.000	0.0090	10.808	24695	24695	0.5002
0.8700	0.87003	5.4666	1.0000	118.32	118.33	1.000	0.0085	10.933	28001	28001	0.5002
0.8800	0.88003	5.5294	1.0000	125.99	126.00	1.000	0.0079	11.059	31749	31749	0.5002
0.8900	0.89002	5.5922	1.0000	134.16	134.16	1.000	0.0075	11.184	35999	35999	0.5002

Tabel A-1. Lanjutan

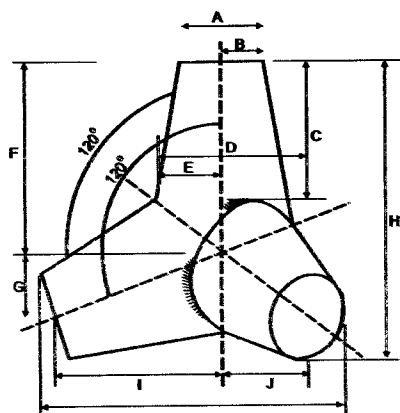
$\frac{d}{L_0}$	$\frac{d}{L}$	$\frac{2\pi d}{L}$	$\tanh \frac{2\pi d}{L}$	$\sinh \frac{2\pi d}{L}$	$\cosh \frac{2\pi d}{L}$	K_s	K	$\frac{4\pi d}{L}$	$\sinh \frac{4\pi d}{L}$	$\cosh \frac{4\pi d}{L}$	n
0.9000	0.90002	5.6550	1.0000	142.86	142.86	1.000	0.0070	11.310	40817	40817	0.5001
0.9100	0.91002	5.7178	1.0000	152.12	152.12	1.000	0.0066	11.436	46281	46281	0.5001
0.9200	0.92002	5.7806	1.0000	161.98	161.98	1.000	0.0062	11.561	52477	52477	0.5001
0.9300	0.93002	5.8435	1.0000	172.48	172.49	1.000	0.0058	11.687	59503	59503	0.5001
0.9400	0.94001	5.9063	1.0000	183.67	183.67	1.000	0.0054	11.813	67469	67469	0.5001
0.9500	0.95001	5.9691	1.0000	195.58	195.58	1.000	0.0051	11.938	76501	76501	0.5001
0.9600	0.96001	6.0319	1.0000	208.26	208.26	1.000	0.0048	12.064	86743	86743	0.5001
0.9700	0.97001	6.0948	1.0000	221.76	221.76	1.000	0.0045	12.190	98357	98357	0.5001
0.9800	0.98001	6.1576	1.0000	236.14	236.14	1.000	0.0042	12.315	111525	111525	0.5001
0.9900	0.99001	6.2204	1.0000	251.45	251.45	1.000	0.0040	12.441	126457	126457	0.5000
1.0000	1.00001	6.2832	1.0000	267.76	267.76	1.000	0.0037	12.566	143388	143388	0.5000



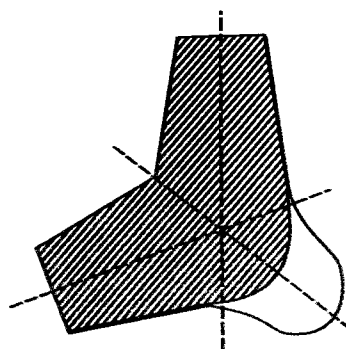
TAMPAK ATAS



TAMPAK BAWAH



TAMPAK SAMPING



TAMPANG A-A

Parameter	Berat Butir Lapis Lindung Tetrapod W (ton)								
	0.50	1.00	2.00	5.00	10.00	15.00	20.00	25.00	30.00
V (m ³)	0.21	0.42	0.83	2.08	4.17	6.25	8.33	10.42	12.50
H (m)	0.91	1.14	1.44	1.95	2.46	2.82	3.10	3.34	3.55
A (m)	0.27	0.34	0.43	0.59	0.74	0.85	0.94	1.01	1.07
B (m)	0.14	0.17	0.22	0.29	0.37	0.43	0.47	0.50	0.54
C (m)	0.43	0.54	0.69	0.93	1.17	1.34	1.48	1.59	1.69
D (m)	0.43	0.54	0.68	0.92	1.16	1.32	1.46	1.57	1.67
E (m)	0.21	0.27	0.34	0.46	0.58	0.66	0.73	0.78	0.83
F (m)	0.58	0.74	0.93	1.26	1.58	1.81	2.00	2.15	2.28
G (m)	0.19	0.25	0.31	0.42	0.53	0.61	0.67	0.72	0.76
I (m)	0.55	0.69	0.87	1.18	1.49	1.71	1.88	2.02	2.15
J (m)	0.27	0.35	0.44	0.59	0.75	0.85	0.94	1.01	1.07
K (m)	0.99	1.25	1.57	2.13	2.68	3.07	3.38	3.64	3.87
L (m)	1.09	1.37	1.73	2.34	2.95	3.38	3.72	4.01	4.26
TLL (m)	1.23	1.55	1.96	2.66	3.35	3.83	4.22	4.54	4.83
JBLL (buah)	29.59	18.64	11.74	6.38	4.02	3.07	2.53	2.18	1.93

Catatan

Berat jenis beton : 2,4 ton/m³

Volume Butir Lapis Lindung (V) = 0,280 H³

dengan :

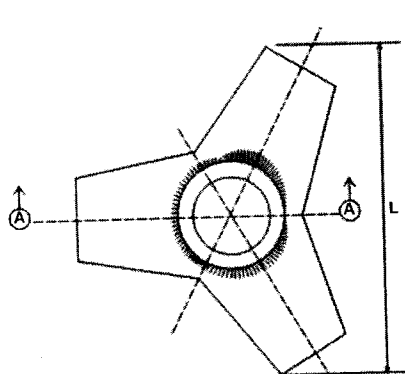
A = 0,302 H	G = 0,215 H
B = 0,151 H	H = Tinggi tetrapod
C = 0,477 H	I = 0,606 H
D = 0,470 H	J = 0,303 H
E = 0,235 H	K = 1,091 H
F = 0,644 H	L = 1,201 H

Tebal lapis lindung (2 lapis) t = 1,361 H

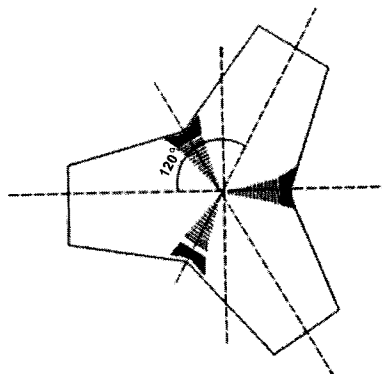
Jumlah butir lapis lindung tiap 10m⁻² Ns = 24,3 H⁻²

TLL : Tebal lapis lindung

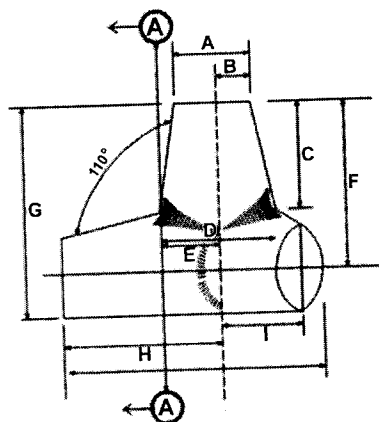
JBLL : Jumlah butir lapis lindung tiap 10 m²



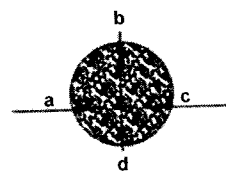
TAMPAK ATAS



TAMPAK BAWAH



TAMPAK SAMPING



TAMPANG A-A

Parameter	Berat Butir Lapis Lindung Quadripod W (ton)								
	0.50	1.00	2.00	5.00	10.00	15.00	20.00	25.00	30.00
V (m ³)	0.21	0.42	0.83	2.08	4.17	6.25	8.33	10.42	12.50
G (m)	0.75	0.94	1.19	1.61	2.03	2.33	2.56	2.76	2.93
A (m)	0.29	0.36	0.45	0.62	0.78	0.89	0.98	1.05	1.12
B (m)	0.14	0.18	0.23	0.31	0.39	0.44	0.49	0.53	0.56
C (m)	0.39	0.50	0.63	0.85	1.07	1.22	1.35	1.45	1.54
D (m)	0.42	0.53	0.67	0.91	1.15	1.32	1.45	1.56	1.66
E (m)	0.21	0.27	0.34	0.46	0.58	0.66	0.73	0.78	0.83
F (m)	0.61	0.76	0.96	1.31	1.65	1.88	2.07	2.23	2.37
H (m)	0.61	0.76	0.96	1.31	1.65	1.88	2.07	2.23	2.37
I (m)	0.30	0.38	0.48	0.65	0.82	0.94	1.04	1.12	1.19
J (m)	1.03	1.30	1.64	2.23	2.81	3.21	3.53	3.81	4.05
K (m)	1.19	1.50	1.89	2.57	3.24	3.71	4.08	4.40	4.67
TLL (m)	1.13	1.42	1.79	2.43	3.06	3.50	3.85	4.15	4.41
JBLL (buah)	27.57	17.37	10.94	5.94	3.74	2.86	2.36	2.03	1.80

Catatan

Berat jenis beton : 2,4 ton/m³

Volume Butir Lapis Lindung (V) = 0,495 H³

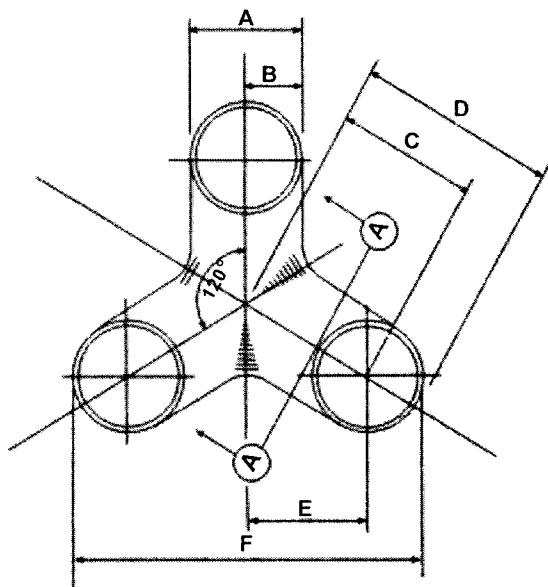
dengan : A = 0,382 G G = tinggi quadripod
 B = 0,191 G H = 0,809 G
 C = 0,526 G I = 0,405 G
 D = 0,566 G J = 1,379 G
 E = 0,283 G K = 1,592 G
 F = 0,809 G

Tebal lapis lindung (2 lapis) t = 1,503 G

Jumlah butir lapis lindung tiap 10 m⁻² N = 15,48 G⁻²

TLL : Tebal lapis lindung

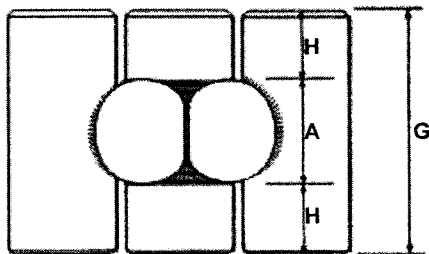
JBLL : Jumlah butir lapis lindung tiap 10 m²



TAMPAK ATAS



TAMPANG A-A



TAMPAK SAMPING

Parameter	Berat Butir Lapis Lindung Tribar W (ton)								
	0.50	1.00	2.00	5.00	10.00	15.00	20.00	25.00	30.00
V (m ³)	0.21	0.42	0.83	2.08	4.17	6.25	8.33	10.42	12.50
A (m)	0.32	0.40	0.51	0.69	0.86	0.99	1.09	1.17	1.25
B (m)	0.16	0.20	0.25	0.34	0.43	0.49	0.54	0.59	0.62
C (m)	0.40	0.50	0.63	0.86	1.08	1.24	1.36	1.47	1.56
D (m)	0.56	0.70	0.88	1.20	1.51	1.73	1.91	2.05	2.18
E (m)	0.34	0.43	0.54	0.73	0.92	1.05	1.15	1.24	1.32
F (m)	1.01	1.27	1.60	2.17	2.73	3.13	3.44	3.71	3.94
G (m)	0.64	0.80	1.01	1.37	1.73	1.98	2.18	2.35	2.49
H (m)	0.16	0.20	0.25	0.34	0.43	0.49	0.54	0.59	0.62
TLL (m)	1.21	1.52	1.92	2.61	3.28	3.76	4.14	4.45	4.73
JBL (buah)	26.75	16.85	10.61	5.76	3.63	2.77	2.29	1.97	1.75

Catatan

Berat jenis beton : 2,4 ton/m³

Volume Butir Lapis Lindung (V) = 6,46 A³

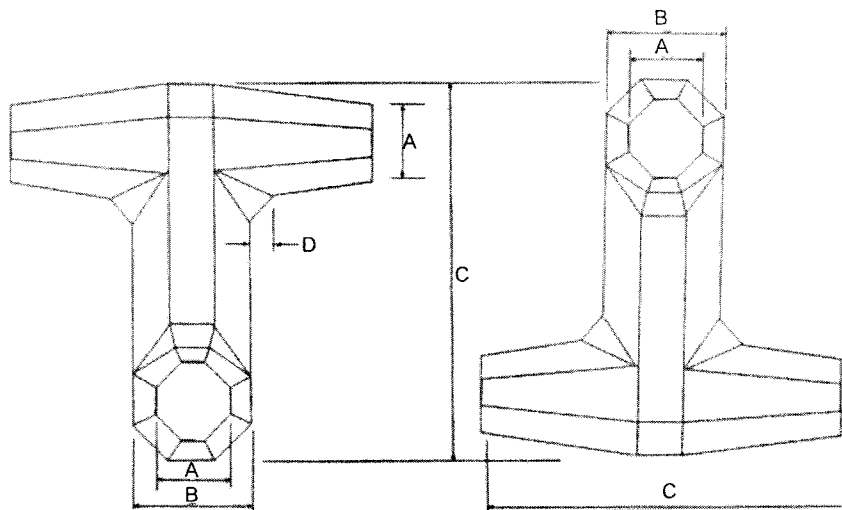
dengan : A = diameter kaki E = 1,06A
 B = 0,5 A F = 3,16A
 C = 1,25 A G = 2A
 D = 1,75 A H = B = 0,5A

Tebal lapis lindung (2 lapis) t = 3.799 A

Jumlah butir lapis lindung tiap 10 m⁻² Ns = 2.71 A⁻²

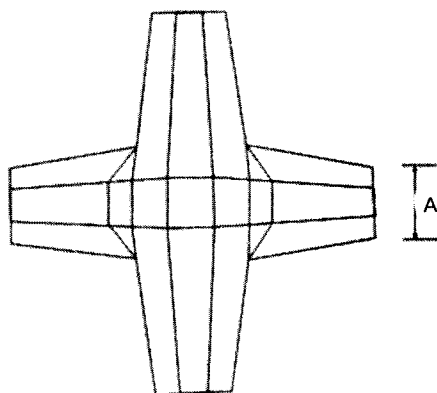
TLL : Tebal lapis lindung

JBL : Jumlah butir lapis lindung tiap 10 m²



TAMPAK ATAS

TAMPAK SISI



TAMPAK SAMPIING

Parameter	Berat Butir Lapis Lindung Dolos W (ton)								
	0.50	1.00	2.00	5.00	10.00	15.00	20.00	25.00	30.00
V (m ³)	0.21	0.42	0.83	2.08	4.17	6.25	8.33	10.42	12.50
C (m)	1.09	1.38	1.73	2.35	2.96	3.39	3.73	4.02	4.27
A (m)	0.22	0.28	0.35	0.47	0.59	0.68	0.75	0.80	0.85
B (m)	0.35	0.44	0.55	0.75	0.95	1.09	1.20	1.29	1.37
D (m)	0.06	0.08	0.10	0.13	0.17	0.19	0.21	0.23	0.24
TLL (m)	1.11	1.40	1.77	2.40	3.02	3.46	3.81	4.10	4.36
JBLL (buah)	23.53	14.82	9.34	5.07	3.19	2.44	2.01	1.73	1.54

Catatan

Berat jenis beton : 2,4 ton/m³

Volume Butir Lapis Lindung (V) = 0,160 C³

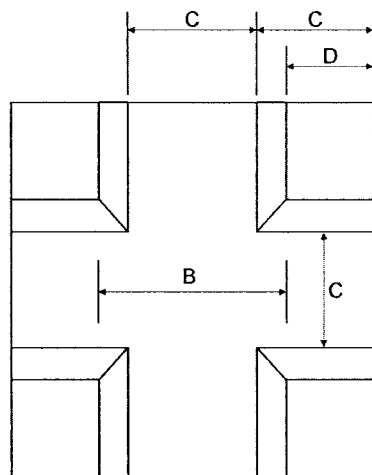
dengan : A = 0,20 C C = Tinggi Dolos
B = 0,32 C D = 0,057 C

Tebal lapis lindung (2 lapis) t = 1,020 C

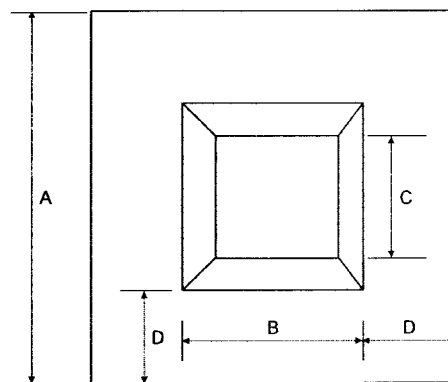
Jumlah butir lapis lindung tiap 10 m⁻² N = 28,06 H⁻²

TLL : Tebal lapis lindung

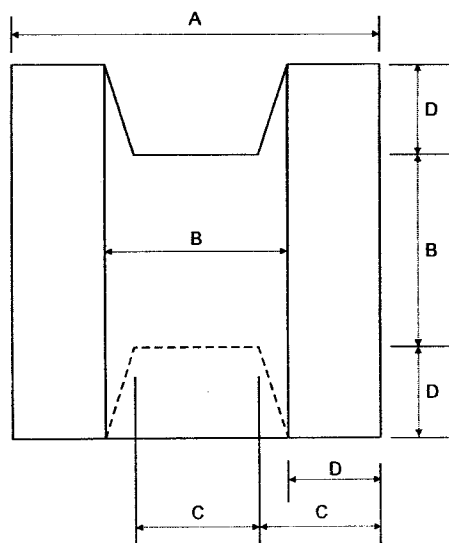
JBLL : Jumlah butir lapis lindung tiap 10 m²



TAMPAK ATAS



TAMPAK BAWAH



TAMPAK SAMPING

Parameter	Berat Butir Lapis Lindung Kubus dimodifikasi W (ton)								
	0.50	1.00	2.00	5.00	10.00	15.00	20.00	25.00	30.00
V (m ³)	0.21	0.42	0.83	2.08	4.17	6.25	8.33	10.42	12.50
A (m)	0.64	0.81	1.02	1.39	1.75	2.00	2.20	2.37	2.52
B (m)	0.32	0.41	0.51	0.70	0.88	1.00	1.11	1.19	1.27
C (m)	0.22	0.27	0.34	0.46	0.59	0.67	0.74	0.79	0.84
D (m)	0.16	0.20	0.25	0.35	0.44	0.50	0.55	0.59	0.63
TLL (m)	1.30	1.64	2.07	2.81	3.54	4.05	4.46	4.80	5.11
JBL (buah)	33.18	20.90	13.17	7.15	4.50	3.44	2.84	2.44	2.17

Catatan

Berat jenis beton : 2,4 ton/m³

Volume Butir Lapis Lindung (V) = 0,781 A³

dengan : A = sisi kubus C = 0,335 A

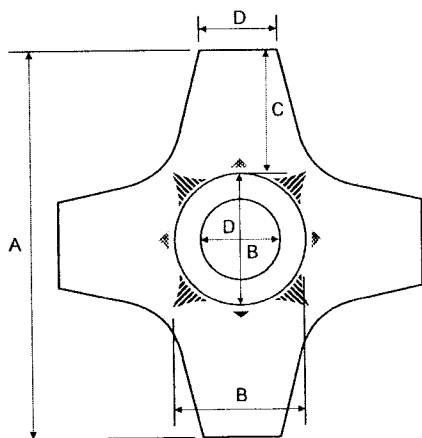
B = 0,502 A D = 0,249 A

Tebal lapis lindung (2 lapis) t = 2,026 A

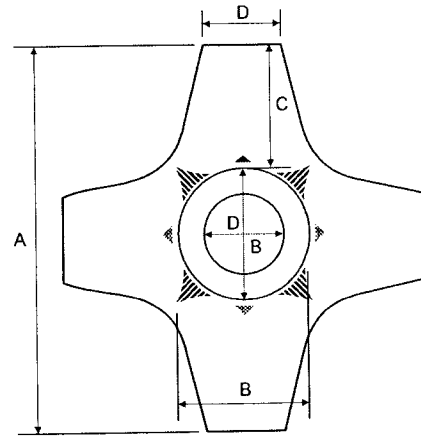
Jumlah butir lapis lindung tiap 10 m² Ns = 13,75 A⁻²

TLL : Tebal lapis lindung

JBL : Jumlah butir lapis lindung tiap 10 m²



TAMPAK ATAS



TAMPAK SAMPING

Parameter	Berat Butir Lapis Lindung Hexapod W (ton)								
	0.50	1.00	2.00	5.00	10.00	15.00	20.00	25.00	30.00
V (m3)	0.21	0.42	0.83	2.08	4.17	6.25	8.33	10.42	12.50
A (m)	1.06	1.33	1.68	2.28	2.87	3.29	3.62	3.90	4.14
B (m)	0.38	0.48	0.60	0.81	1.03	1.17	1.29	1.39	1.48
C (m)	0.34	0.43	0.54	0.73	0.92	1.06	1.16	1.25	1.33
D (m)	0.23	0.29	0.36	0.49	0.62	0.71	0.78	0.84	0.89
TLL (m)	1.36	1.72	2.16	2.94	3.70	4.24	4.66	5.02	5.34
JBLL (buah)	34.68	21.85	13.76	7.47	4.71	3.59	2.97	2.56	2.26

Catatan

Berat jenis beton : 2,4 ton/m³

Volume Butir Lapis Lindung (V) = 0,781 A³

dengan : A = sisi kubus C = 0,322 A
B = 0,357A D = 0,215 A

Tebal lapis lindung (2 lapis) t = 1,289 A

Jumlah butir lapis lindung tiap 10 m⁻² Ns = 38.81 A⁻²

TLL : Tebal lapis lindung

JBLL : Jumlah butir lapis lindung tiap 10 m²