



MENGUJI RESPON GANDA

Aryan Eka Prastya Nugraha, S.E.,M.Pd
2020

RULES



1. **PJ mata kuliah wajib mempersiapkan perlengkapan sebelum proses pembelajaran**
2. **Membawa Laptop (optional)**
3. **Terpasang Software SPSS**
4. **Terkoneksi Internet**
5. **Mengumpulkan *hasil praktik* selesai perkuliahan di SIP**

MULT RESPONSE analysis allows the researcher to analyze research questions that can have multiple responses.

For example, a research question may ask respondents to *name* all the newspapers read within last week, or to *circle* all newspapers read within last week from a list of newspapers. One way to generate descriptive statistics for each of the newspapers selected is to do a simple FREQUENCIES analysis.

For example, if the researcher is interested in the number of respondents who chose newspaper A as a *percentage of the total number of newspapers read*, then the MULT RESPONSE procedure should be used.

Methods of MULTI RESPONSE Procedures

There are two ways to perform a frequency run with multiple response data. Whichever way the researcher chooses, the procedure will involve combining variables into groups.

One way to organize multiple-response data is to create, for each possible response, a variable that can have one of two values, such as 1 for yes and 2 for no; this is the multiple-dichotomy method

Alternatively, on the basis of all responses collected from all respondents, the researcher can create variables to represent, for example, all the newspapers read. Each variable (newspaper) will have a value representing that newspaper, such a 1 for *Bangkok Post*, 2 for *The Nation*, and 3 for *Thai Rath*.

This is the **multiple-response** method.

Example of the Multiple-Dichotomy Method

Suppose that in a survey of political party preference, the following question was asked.

“Why do you prefer that political party?” (you can choose more than one reason)



		1. Yes	2. No
1.	The party is honest.	_____	_____
2.	The party has integrity.	_____	_____
3.	The party is trustworthy.	_____	_____
4.	The party has always kept its promises.	_____	_____
5.	The party has strong leadership.	_____	_____

2.	The party has strong leadership.	_____	_____
3.	The party has always kept its promises.	_____	_____

In this example, the respondent is asked to endorse the reasons for preferring a specific political party. Each reason is, therefore, a separate variable, with two possible values: 1 for *yes*, and 2 for *no*. The five reasons are named **HONEST**, **INTEG**, **TRUST**, **PROMISE**, and **LEADER** in the data set below.

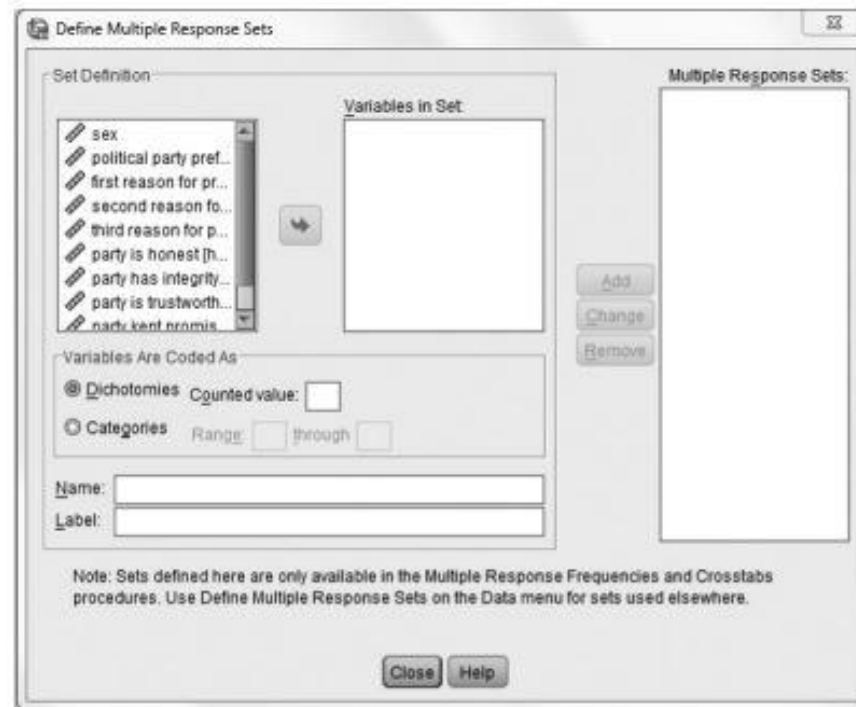
Data Entry Format

Variables	Column(s)	Code
Sex	1	1 = Male, 2 = Female
Party	2	1 = Labor, 2 = Liberal 3 = National, 4 = Democrat
REASON 1	3	1 = The party is honest. 2 = The party has integrity. 3 = The party is trustworthy. 4 = The party has always kept its promises. 5 = The party has strong leadership.
REASON 2	4	As above
REASON 3	5	As above
HONEST	6	1 = yes, 2 = no
INTEG	7	1 = yes, 2 = no
TRUST	8	1 = yes, 2 = no
PROMISE	9	1 = yes, 2 = no
LEADER	10	1 = yes, 2 = no

LEADER	10	1 = yes, 2 = no
PROMISE	9	1 = yes, 2 = no
TRUST	8	1 = yes, 2 = no
INTEG	7	1 = yes, 2 = no

Windows Method

1. From the menu bar, click **Analyze**, then **Multiple Response**, and then **Define Variable Sets**. The following **Define Multiple Response Sets** window will open.



In the **Set Definition** field containing the study's variables, click (highlight) the variables (**HONEST**, **INTEG**, **TRUST**, **PROMISE**, **LEADER**) that will be grouped in the multiple response set. Click to transfer the selected variables to the **Variables in Set:** field.

Since only those variables (reasons) that have been coded 1 (for *yes*) will be grouped for analysis, check the **Dichotomies** button, and in the **Counted value:** cell type **1**. Next, in the **Name:** field, type in a name for this multiple response set (e.g., *reasons*), and in the **Label:** field, type in a label (e.g., "*reasons for preferring that party*").

Define Multiple Response Sets

Set Definition

sex
political party prefer...
first reason for prefe...
second reason for p...
third reason for pref...

Variables in Set:

party is honest (hon...
party has integrity (in...
party is trustworthy (t...
party kept promises ...
party has strong lea...

Variables Are Coded As

☒ Dichotomies Counted value: 1
☐ Categories Range: through

Name: reasons
Label: reasons for preferring that party

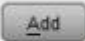
Multiple Response Sets:

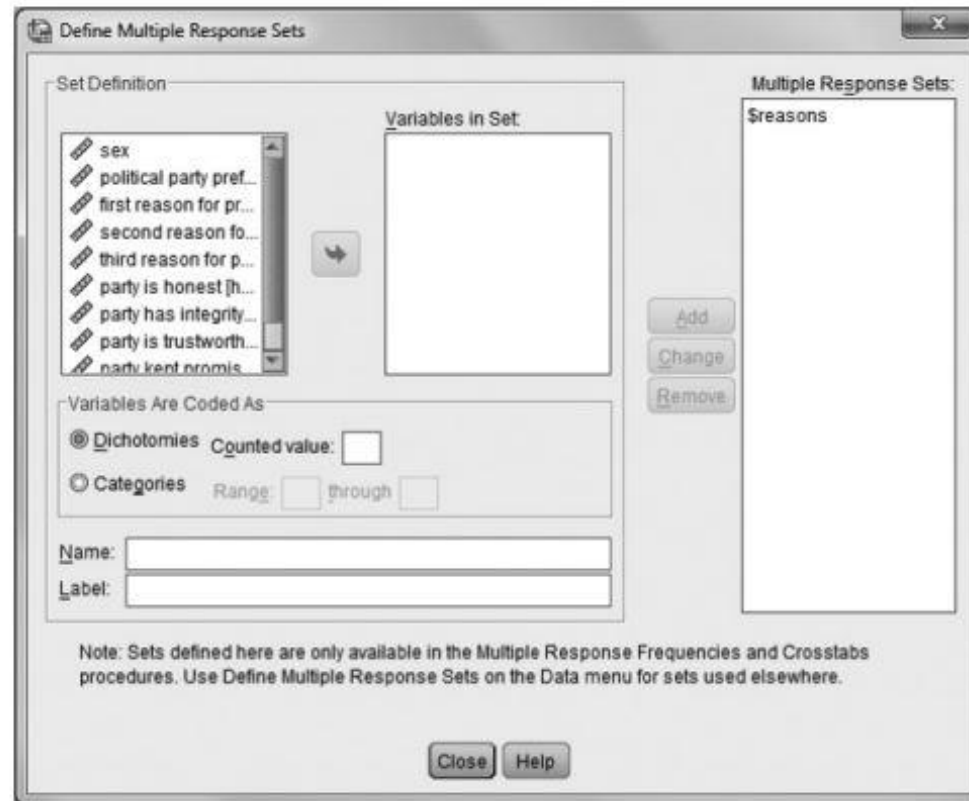
Add
Change
Remove

Note: Sets defined here are only available in the Multiple Response Frequencies and Crosstabs procedures. Use Define Multiple Response Sets on the Data menu for sets used elsewhere.

Close Help

procedures. Use Define Multiple Response Sets on the Data menu for sets used elsewhere.
Note: Sets defined here are only available in the Multiple Response Frequencies and Crosstabs

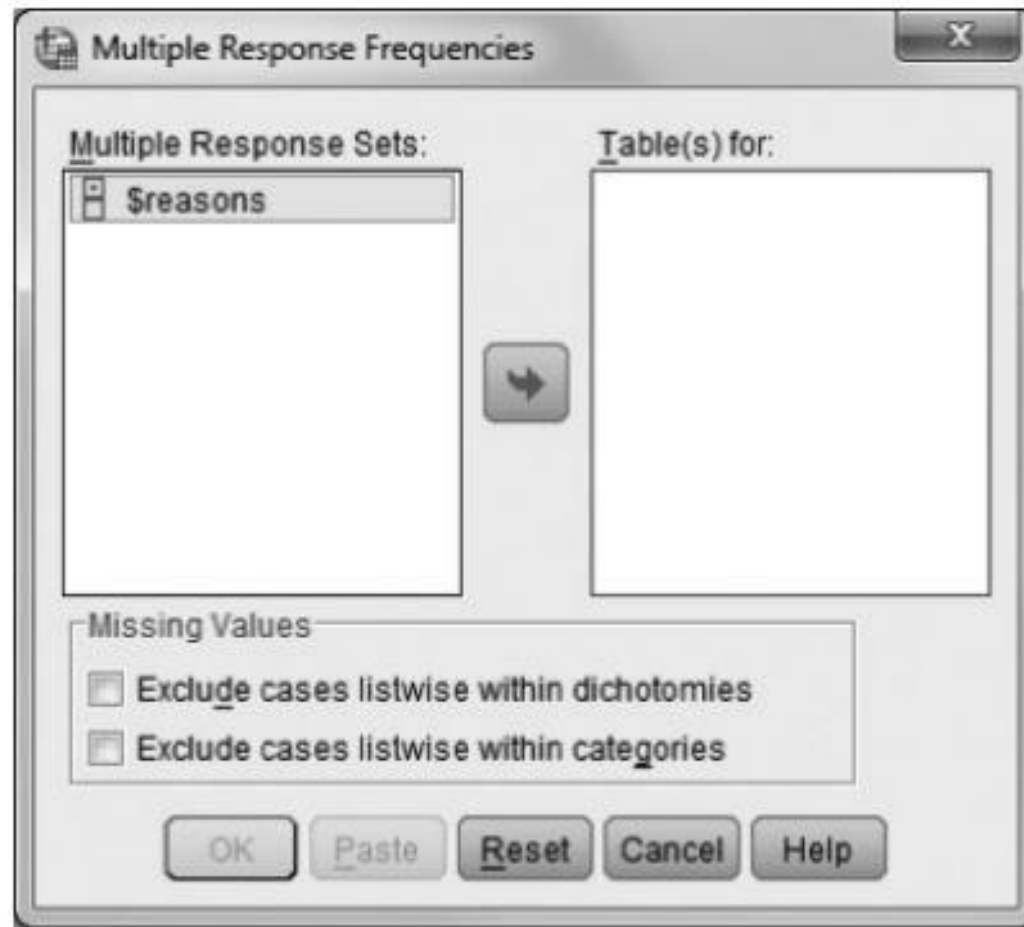
3. Click  to transfer this response set to the **Multiple Response Sets:** field. The grouped response set is given the name *\$reasons*.



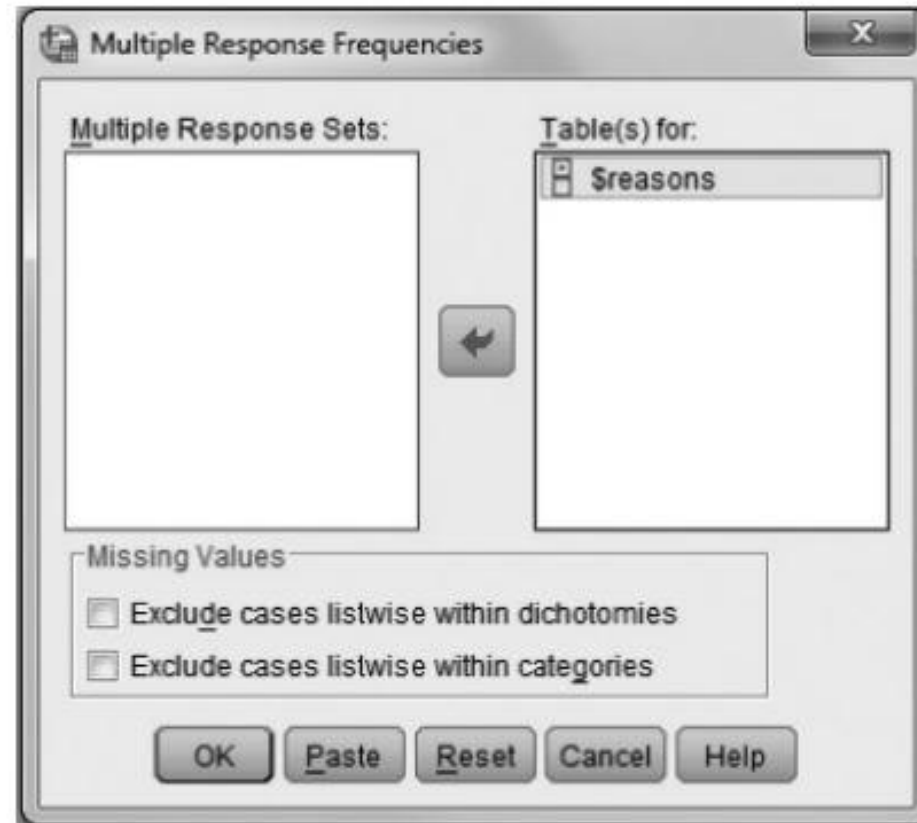
The dialog box is titled "Define Multiple Response Sets". It contains several sections:

- Set Definition:** A list of variables on the left, including "sex", "political party pref...", "first reason for pr...", "second reason fo...", "third reason for p...", "party is honest (h...", "party has integrity...", "party is trustworth...", and "party kept promis...". A right-pointing arrow button is between the list and the "Variables in Set:" box.
- Variables in Set:** An empty rectangular box for the selected variables.
- Variables Are Coded As:** Two radio buttons: "Dichotomies" (selected) and "Categories". The "Dichotomies" option has a "Counted value:" field. The "Categories" option has a "Range:" field with "through" text.
- Name:** A text input field.
- Label:** A text input field.
- Multiple Response Sets:** A list on the right containing the name "\$reasons". Below this list are "Add", "Change", and "Remove" buttons.
- Note:** A paragraph at the bottom stating: "Note: Sets defined here are only available in the Multiple Response Frequencies and Crosstabs procedures. Use Define Multiple Response Sets on the Data menu for sets used elsewhere."
- Buttons:** "Close" and "Help" buttons at the bottom center.

4. From the menu bar, click **Analyze**, then **Multiple Response**, and then **Frequencies**. The following **Multiple Response Frequencies** window will open.



5. Transfer the grouped response set *\$reasons* (reasons for preferring that party) in the **Multiple Response Sets:** field to the **Table(s) for:** field by clicking (highlight) the response set, and then clicking ➡.



SPSS Output

In Table 3.1, the **N** column (beneath the **Responses** heading) presents the number of respondents who answered *yes* to each of the five reasons.

Thus, of the ... respondents included in the analysis,ndorsed “*party is honest*” as a reason for preferring that political party.....endorsed “*party has integrity*” as a reason, 10 endorsed “*party is trustworthy*” as a reason,endorsed “*party kept promises*” as a reason, andendorsed “*party has strong leader*” as a reason. Thus, a total of *yes* responses were generated from the sample of respondents.

Multiple Response (Multiple-Dichotomy) Output

Multiple Response						
Case Summary						
	Cases					
	Valid		Missing		Total	
	N	Percent	N	Percent	N	Percent
\$reasons ^a	20	100.0%	0	.0%	20	100.0%

^a Dichotomy group tabulated at value 1.

^a Dichotomy group tabulated at value 1.

\$reasons ^a	20	100.0%	0	.0%	20	100.0%
------------------------	----	--------	---	-----	----	--------

Reasons Frequencies

		Responses		Percent of Cases
		N	Percent	
Reasons for Preferring That Party ^a	party is honest	13	23.2%	65.0%
	party has integrity	8	14.3%	40.0%
	party is trustworthy	10	17.9%	50.0%
	party kept promises	12	21.4%	60.0%
	party has strong leader	13	23.2%	65.0%
Total		56	100.0%	280.0%

^a Dichotomy group tabulated at value 1.

^a Dichotomy group tabulated at value 1.

Total

28

100.0%

280.0%

169961

100.0% 100.0%

28

100.0%

280.0%

The **Percent** column presents the number of respondents who answered *yes* to each of the five reasons (in the **N** column) as a percentage of the total number of *yes* responses generated. For example, the respondents who endorsed “*party is honest*” as a reason for preferring that political party represent of the total number of *yes* responses (.....) generated.

The **Percent of Cases** column presents the number of respondents who answered *yes* to each of the five reasons (in the **N** column) as a percentage of the total valid sample. For example, therespondents who endorsed “*party is honest*” as a reason represent of the total valid sample ($N = \dots$ cases).

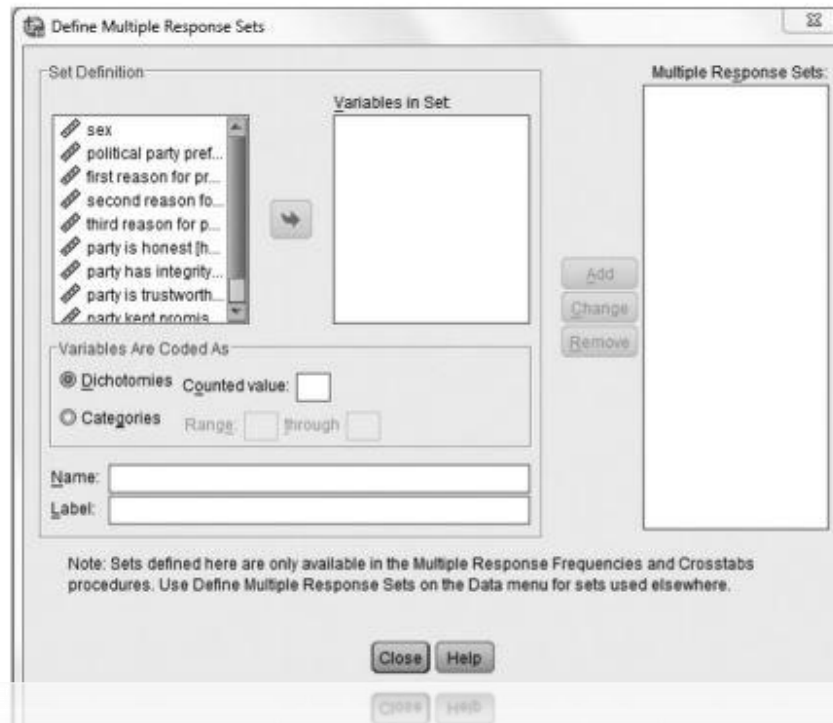
Example of the Multiple-Response Method

Using the same example as above, the following question was asked. *Why do you prefer that political party?* With the multiple-response method, the grouping of the multiple responses is different from the multiple-dichotomy method. A predetermined list of reasons will be used by the researcher in the multiple-response method to match the reasons chosen by the respondents. For example, a researcher may have the following list of reasons, each of which has been assigned a numerical value:

- 1 = The party is honest.
 - 2 = The party has integrity.
 - 3 = The party is trustworthy.
 - 4 = The party has always kept its promises.
 - 5 = The party has strong leadership.
-

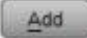
Windows Method

1. From the menu bar, click **Analyze**, then **Multiple Response**, and then **Define Variable Sets**. The following **Define Multiple Response Sets** window will open.



In the **Set Definition** field containing the study variables, click (highlight) the variables (**REASON1, REASON2, REASON3**) that will be grouped in the multiple response set.

Click to transfer the selected variables to the **Variables in Set:** field. Since these three variables (reasons) have been coded from a predetermined list of five reasons (see Section 3.4), check the **Categories** field, and in the **Range** fields type **1** through **5**. Next, in the **Name:** field, type in a name for this multiple response set (e.g., *reasons*), and in the **Label:** field, type in a label (e.g., *“reasons for preferring that party”*)

Click  to transfer this response set to the **Multiple Response Sets:** field. The grouped response set is given the name *\$reasons*.




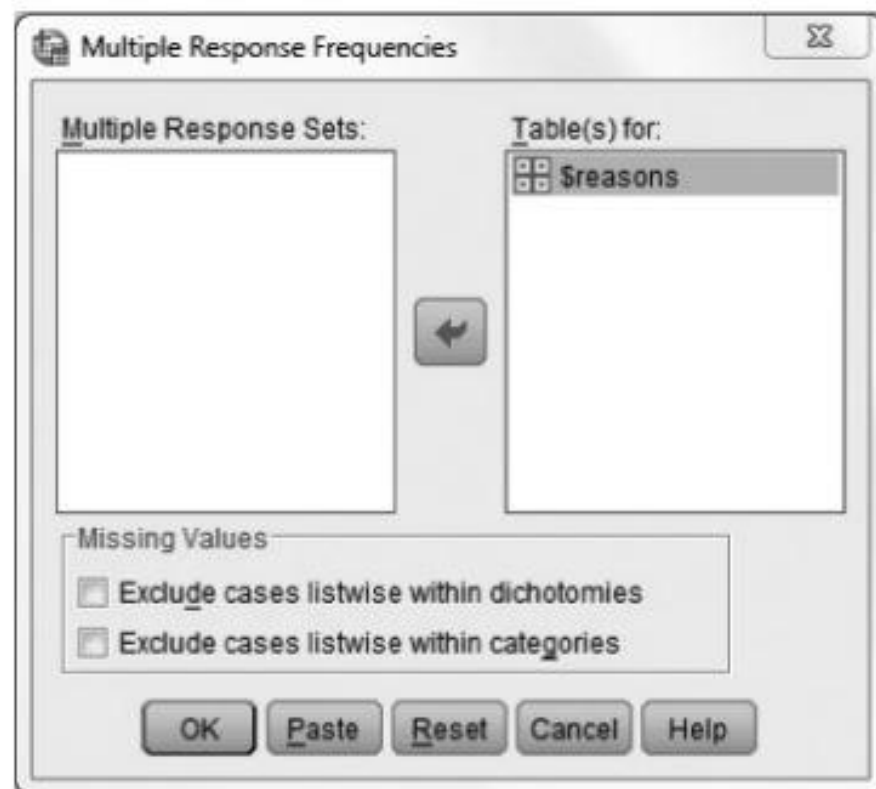
The dialog box is titled "Define Multiple Response Sets". It contains the following sections:

- Set Definition:**
 - A list of variables on the left: sex, political party pref..., first reason for pr..., second reason fo..., third reason for p..., party is honest (h..., party has integrity..., party is trustworth..., party kept promis... (truncated).
 - A right-pointing arrow button between the lists.
 - A "Variables in Set:" box on the right, which is currently empty.
- Variables Are Coded As:**
 - ☒ Dichotomies Counted value:
 - ☐ Categories Range: through
- Name:**
- Label:**
- Multiple Response Sets:** A list box containing the name "\$reasons".
- Buttons: "Add", "Change", and "Remove" are located between the "Variables in Set:" box and the "Multiple Response Sets:" list.
- Buttons: "Close" and "Help" are at the bottom.
- Note:** Sets defined here are only available in the Multiple Response Frequencies and Crosstabs procedures. Use Define Multiple Response Sets on the Data menu for sets used elsewhere.

3. From the menu bar, click **Analyze**, then **Multiple Response**, and then **Frequencies**. The following **Multiple Response Frequencies** window will open.



4. Transfer the grouped response set *\$reasons* (reasons for preferring that party) in the **Multiple Response Sets:** field to the **Table(s) for:** field by clicking the response set, and then clicking .



5. Click to run a multiple response frequencies analysis for the variables (REASON1, REASON2, REASON3) in the grouped response set

SPSS Output

Multiple Response (Multiple-Response) Output

Multiple Response

Case Summary

	Cases					
	Valid		Missing		Total	
	N	Percent	N	Percent	N	Percent
\$reasons ^a	20	100.0%	0	.0%	20	100.0%

^a Group.

^a Group.

\$reasons ^a	20	100.0%	0	.0%	20	100.0%
------------------------	----	--------	---	-----	----	--------

Reasons Frequencies

		Responses		Percent of Cases
		N	Percent	
Reasons for Preferring That Party ^a	party is honest	11	18.3%	55.0%
	party has integrity	12	20.0%	60.0%
	party is trustworthy	12	20.0%	60.0%
	party kept promises	11	18.3%	55.0%
	party has strong leadership	14	23.3%	70.0%
Total		60	100.0%	300.0%

^a Group.

Group

Total

60

100.0%

300.0%

Frequency

The **Percent** column presents the number of respondents who chose each of the five reasons (in the **N** column) as a percentage of the total number of responses generated. For example, the 11 respondents who chose “*party is honest*” as a reason representof the total number of responses (.....) generated.

The **Percent of Cases** column presents the number of respondents who selected each of the five reasons (in the **N** column) as a percentage of the total valid sample. For example, the 11 respondents who chose “*party is honest*” as a reason represent of the total valid sample ($N = \dots$ cases

REFLEKSI

1. Informasi penting hari ini
 2. Manfaat penting dari informasi penting hari ini
 3. Tindak lanjut yang dapat saudara lakukan
-



Thank You